



2013 INFINITI QX

Discover the way we define the feel of
immersive luxury.

Prepared Exclusively for:

Local Retailer:

2013 SPECIFICATIONS

INFINITI QX



QX56
2WD QX56
4WD

POWER

ENGINE

5.6-liter (5,552cc) 32-valve V8 engine, aluminum-alloy block and heads. Dry film-coated pistons

• •

VALVETRAIN

Double overhead camshaft (DOHC), 4 valves per cylinder with microfinished camshafts. Direct Injection Gasoline (DIG). Variable Valve Event and Lift (VVEL[®]) and Continuously Variable Valve Timing Control System (CVTCS) optimizes opening of intake and exhaust valves

• •

HORSEPOWER

400 hp @ 5,800 rpm

• •

TORQUE

413 lb-ft @ 4,000 rpm

• •

TRANSMISSION

Electronically controlled 7-speed automatic with Adaptive Shift Control (ASC). Driver-adaptive learning algorithm senses driving style and adjusts automatic shifting accordingly. Manual shift mode offers sequentially selectable manual gearshifts and Downshift Rev Matching (DRM)

• •

Snow and Tow modes control throttle response and transmission shift points

• •

DRIVE TYPE

Rear-wheel drive

• •

Infiniti All-Mode 4WD[®] with computer-controlled transfer case, offers settings in Auto, 4H and 4L

• •

TRACTION

2-wheel Active Brake Limited Slip (ABLS)

• •

4-wheel Active Brake Limited Slip (ABLS)

• •

Hill start assist

• •

HANDLING

STEERING

Type Engine-speed-sensitive power steering

• •

Turning diameter 41.6 feet

• •

SUSPENSION

Front Independent, double-wishbone

• •

Rear Independent, double-wishbone

• •

Deluxe Touring Package Hydraulic Body Motion Control system helps decrease body lean for a more comfortable and controlled ride

○ ○

BRAKES

Front 13.78 x 1.18-inch ventilated discs

• •

Rear 13.78 x 0.79-inch ventilated discs

• •

4-wheel, 4-channel ABS

• •

WHEELS AND TIRES

Standard 20 x 8.0-inch, forked 7-spoke aluminum-alloy wheels with 275/60R20 all-season tires

• •

Tire and Wheel Package 22 x 8.0-inch, 9-spoke forged aluminum-alloy wheels with 275/50R22 all-season tires

○ ○

Spare tire Aluminum-alloy wheel with 275/60R20 all-season spare

• •

	QX56 2WD	QX56 4WD		QX56 2WD	QX56 4WD
EXTERIOR					
FEATURES					
Automatic on/off High Intensity Discharge (HID) bi-functional xenon headlights with windshield wiper interlock	•	•			
Integrated front fog lights	•	•			
LED rear brake lights and center high-mounted stoplight (CHMSL)	•	•			
Skid plate (under radiator)	•	•			
Body-color running boards with integrated splash guards	•	•			
Power sliding tinted glass moonroof with one-touch auto-open/close, tilt feature and sliding sunshade	•	•			
Power rear liftgate	•	•			
Roof rails	•	•			
UV-reducing solar glass	•	•			
Rear privacy glass	•	•			
Remote power-opening of windows using Infiniti Intelligent Key; closing via key in exterior door lock	•	•			
Auto-dimming, power folding, heated outside mirrors with integrated turn signals, courtesy lights and reverse tilt-down feature	•	•			
Rain-sensing, variable intermittent front windshield wipers	•	•			
Rear window intermittent wiper and defroster with timer	•	•			
Integrated Class IV tow hitch and 7-pin wiring harness with cover	•	•			
INTERIOR					
FEATURES					
Infiniti Intelligent Key with Illuminated Push Button Ignition	•	•			
Tri-Zone Automatic Temperature Control system with microfilter	•	•			
Mild-flow vent located on upper dash	•	•			
Rear-seat heater ducts under front seats	•	•			
Power windows with illuminated switches and one-touch auto-up/down with auto-reverse feature	•	•			
Power door locks with automatic locking feature	•	•			
Retained accessory power for windows and moonroof	•	•			
Sequential welcome lighting illuminated entry system and overhead ambient light	•	•			
Front sun visors with illuminated vanity mirrors and extension	•	•			
Overhead sunglasses storage	•	•			
Dual overhead front map lights, rear-seat reading lights	•	•			
Lockable glove compartment	•	•			
Front seatback map pockets; front and rear door pockets	•	•			
9 cup holders and 4 bottle holders	•	•			
Front center console with adjustable armrest, storage compartment and 12-volt power outlet	•	•			
Second-row center console armrest with two storage compartments	•	•			
12-volt power outlet in cargo area	•	•			
Outside temperature display	•	•			
Battery saver helps prevent accidental discharging if electrical accessories are left on	•	•			
Front and rear carpeted floor mats	•	•			
SEATING AND TRIM					
Leather-appointed seating	•	•			
10-way power driver's seat, including 2-way power lumbar support	•	•			
8-way power front-passenger's seat, including 2-way power lumbar support	•	•			
Dual occupant memory system for driver's seat, outside mirrors and steering wheel, linked to individual Intelligent Keys	•	•			
Entry/exit assist for driver's seat and steering wheel	•	•			
Heated front seats	•	•			
Tuscan Burl trim	•	•			
Leather-wrapped steering wheel and shift knob	•	•			
Heated steering wheel	•	•			
Aluminum kick plates	•	•			
Second-row captain's chairs with tip-up easy entry for third-row	•	•			
Power 60/40-split fold-flat and reclining third-row seats	•	•			
AUDIO SYSTEM					
Bose® 13-speaker Premium Audio system, including 2 subwoofers, AM/FM radio, single in-dash CD/DVD player with MP3 playback capability, Radio Data System (RDS) and speed-sensitive volume control	•	•			
Driver's Audio Stage	•	•			
Streaming audio via Bluetooth® wireless technology ¹	•	•			
USB connection port for iPod® interface and other compatible devices ²	•	•			
SiriusXM Satellite Radio ³	•	•			
Auxiliary audio/video input jacks in front center console ²	•	•			
Illuminated steering wheel-mounted audio controls	•	•			
INSTRUMENTATION AND DRIVER CONTROLS					
Fine Vision electroluminescent gauges	•	•			
Power tilt and telescopic steering column	•	•			
Bluetooth® Hands-free Phone System ¹	•	•			
Infiniti Controller for audio, climate control, fuel economy, maintenance, and comfort and convenience features	•	•			
8-inch WVGA color touch-screen display	•	•			
Infiniti Hard Drive Navigation System with Lane Guidance and 3-D building graphics ⁴	•	•			
Infiniti Voice Recognition for audio, navigation and vehicle information systems	•	•			
NavTraffic with Real-Time Traffic information ³	•	•			
NavWeather with Real-Time Weather and 3-day forecast ³	•	•			
Zagat Survey® Restaurant Guide	•	•			
Around View® Monitor with Moving Object Detection ⁵ and Front and Rear Sonar System ⁶	•	•			
Auto-dimming inside mirror with HomeLink® Universal Transceiver	•	•			
Cruise control with steering wheel-mounted switches	•	•			
Analog clock	•	•			

OPTIONS

THEATER PACKAGE

Dual 7-inch color monitors for multimedia video playback	○	○
Two wireless headphones		
Wireless remote control		
Auxiliary audio/video input jacks ²		
120V power outlet		
Heated second-row seats (outboard only)		
Remote tip-up second-row seats for easy third-row entry/exit		

TIRE AND WHEEL PACKAGE

(Requires Theater Package.)

22 x 8.0-inch, 9-spoke forged aluminum-alloy wheels with 275/50R22 all-season performance tires

SPLIT BENCH SEAT PACKAGE

(Requires Theater Package. Replaces second-row captain's chairs and center console.)

Second-row split bench seat with 60/40-split folding
Increases seating capacity from 7 to 8

DELUXE TOURING PACKAGE

(Requires Tire and Wheel Package.)

Hydraulic Body Motion Control system
Climate-controlled front seats
Bose® Cabin Surround® sound system with digital 5.1-decoding, 15 speakers
Semi-aniline leather seating
Mocha Burl trim
Second-row footwell courtesy lights
Advanced Climate Control System (ACCS) with auto recirculation, Plasmacluster® air purifier and Grape Polyphenol Filter⁷
Headlight washers

TECHNOLOGY PACKAGE

(Requires Deluxe Touring Package.)

Intelligent Cruise Control (Full-Speed Range)⁸
Lane Departure Warning (LDW) and Lane Departure Prevention (LDP)⁹
Distance Control Assist (DCA)¹⁰
Intelligent Brake Assist (IBA)¹¹ with Forward Collision Warning (FCW)¹²
Blind Spot Warning (BSW) and Blind Spot Intervention® (BSI) Systems¹³
Front Pre-Crash Seat Belts
Adaptive Front lighting System (AFS) with auto-leveling headlights

DIMENSIONS AND FIGURES

EXTERIOR

Overall length	208.3 inches
Overall width	79.9 inches
Overall height (with roof rails)	75.8 inches
Wheelbase	121.1 inches
Track width (front/rear)	67.5 inches/67.9 inches
Coefficient of drag (with roof rails)	0.36
Step-in height—front	22.4 inches

INTERIOR

Headroom (1st/2nd/3rd row)	39.9 inches/40.0 inches/36.8 inches
Legroom (1st/2nd/3rd row)	39.6 inches/41.0 inches/28.8 inches
Shoulder room (1st/2nd/3rd row)	63.8 inches/63.5 inches/60.5 inches
Hip room (1st/2nd/3rd row)	59.2 inches/58.4 inches/48.8 inches

WEIGHT AND CAPACITY

Interior passenger volume	152.5 cubic feet
Interior cargo volume (with 3rd row seats up)	16.6 cubic feet
Interior cargo volume (with 3rd row seats down)	49.6 cubic feet
Interior cargo volume (with 2nd and 3rd row seats down)	95.1 cubic feet
Towing capacity	8,500 lbs maximum ¹⁴
Curb weight	2WD 5,595 lbs/4WD 5,855 lbs
Weight distribution (percent) (front/rear)	2WD 51/49 4WD 52/48
Fuel capacity	26.0 gallons
EPA Estimated Fuel Economy (city/highway)	2WD 14/20 mpg ¹⁵ 4WD 14/20 mpg ¹⁵

This specification sheet is intended for general descriptive and informational purposes only. It is subject to change and does not constitute an offer, representation or warranty (express or implied) by Nissan North America, Inc. Interested parties should confirm the accuracy of any information in this brochure as it relates to a vehicle directly with Infiniti before relying on it to make a purchase decision. Nissan North America, Inc. reserves the right to make changes, at any time, without prior notice, in prices, colors, materials, equipment, specifications, and models and to discontinue models or equipment. Due to continuous product development and other pre- and post-production factors, actual vehicle, materials and specifications may vary from this brochure. Some vehicles shown with optional equipment. See the actual vehicle for complete accuracy. Availability and delivery times for particular models or equipment may vary. Specifications, options and accessories may differ in Hawaii, U.S. territories and other countries. For additional information on availability, options or accessories, see your Infiniti retailer or contact Nissan North America, Inc.

Infiniti has taken care to ensure that the color swatches presented here are the closest possible representations of actual vehicle colors. Swatches may vary slightly due to the printing process and whether viewed in daylight, fluorescent or incandescent light. Please see the actual colors at your local Infiniti retailer.

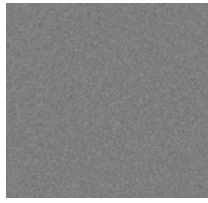
EXTERIOR COLORS



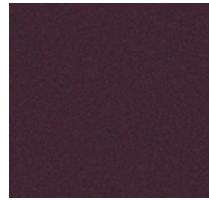
MOONLIGHT WHITE
(QAA)



LIQUID PLATINUM
(K23)



PLATINUM GRAPHITE
(K51)



DARK CURRANT
(L50)



SMOKY QUARTZ
(KAC)

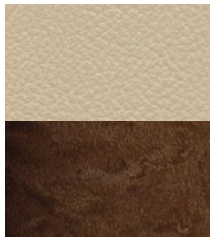


BLACK OBSIDIAN
(KH3)

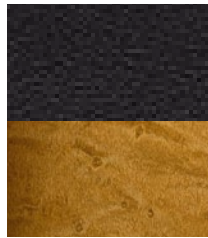
INTERIOR UPHOLSTERY/TRIM



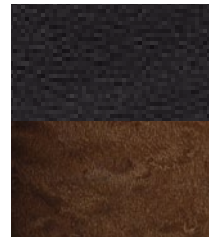
WHEAT LEATHER/
TUSCAN BURL TRIM



WHEAT LEATHER/
MOCHA BURL TRIM
(DELUXE TOURING PACKAGE)



GRAPHITE LEATHER/
TUSCAN BURL TRIM



GRAPHITE LEATHER/
MOCHA BURL TRIM
(DELUXE TOURING PACKAGE)

COLOR

REFINED TO TRANSFORM CHARACTER.

Beyond being visually appealing, Infiniti color is designed to create energy and elicit emotion.

Creating hues that change in response to light and angle, offering a new, intriguing look every time a vehicle is seen to create a more lasting allure. Or matching exterior and interior colors to reflect the distinctive energy and mood of the seasons. These are just two ways Infiniti designs color to evoke feeling, express character, and shape the emotional essence of a vehicle.

GENUINE INFINITI ACCESSORIES

Stainless steel ›
illuminated kick plates



Stainless steel ›
rear bumper protector
Center console mat ›



Genuine Infiniti Accessories are crafted with the same exacting standards as the rest of the vehicle. With a wide array of quality products designed to integrate seamlessly, from chrome body side moldings to stylish stainless steel illuminated kick plates, you can be assured of a custom fit and finish. Color-matched for consistency, and built to Infiniti's exacting standards, you can enjoy the sense of confidence that results from a stringent inspection and testing process.

InfinitiUSA.com/accessories

Infiniti also offers a wide range of luxury apparel, lifestyle and other items which can give every day the touch of inspired performance.

InfinitiLifestyle.com

Nella tumbler ›





< Cargo area protector¹⁶
< Cargo net¹⁶



< Hatch tent
< Carpeted cargo mat¹⁶



< Premium carpeted floor mats
< All-season floor mats
< Vehicle cover



Midnight black grille, hood protector, chrome mirror covers, moonroof wind deflector, roof rail crossbars¹⁶, side window deflectors, chrome body side moldings

- Also available:
- Vehicle cover cable lock
 - Wheel locks
 - Carpeted floor mats
 - License plate frames
 - Ashtray kit
 - Emergency road kit
 - First aid kit
 - Air bag anti-theft bolts
 - Infiniti valve stem caps
 - Towing accessories¹⁴

• Genuine Infiniti Accessories are covered by a 4-year/60,000-mile limited warranty when installed at the time of new vehicle purchase¹⁷ • Finance Genuine Infiniti Accessories when you finance your vehicle • Custom-fit, custom-designed and durability-tested to meet Infiniti standards

Safety



Infiniti Safety Shield® is our comprehensive approach to safety. It includes rigorous crash testing, over 50 standard safety features on every vehicle and available advanced safety technologies. Infiniti Safety Shield® is designed and developed into every vehicle we build to help protect you and your passengers.

Infiniti Advanced Air Bag System (AABS)¹⁸ Includes dual-stage front supplemental air bags with seat belt sensors and an occupant-classification sensor which adjust their inflation rate depending on crash severity and seat belt usage. If the front-passenger's seat is empty, a sensor will deactivate the air bag.

Side-impact Supplemental Air Bags¹⁸ These air bags are placed in the front seat side bolsters so they can move with the seat to help maintain optimal positioning.

Roof-mounted Curtain Side-impact Supplemental Air Bags¹⁸ Deployed from the headliner above the side windows, they help give outboard occupants in all three rows enhanced head protection in the case of a side impact or rollover. Tied to the vehicle's rollover and side-impact sensors, they are designed to offer added protection by staying inflated for an extended time.

Rollover Sensor The QX is equipped with a sensor that can help detect an impending rollover. If one is deemed imminent, the system deploys the side-curtain air bags to help provide enhanced occupant protection.

4-wheel Anti-lock Braking System (ABS) By preventing wheel lockup, the ABS system on the QX helps you maintain steering control of the vehicle, even during emergency braking situations.

Brake Assist (BA) In emergency braking situations, some drivers may not brake hard enough, soon enough. Brake Assist monitors how you apply the brakes and, sensing emergency braking, works with the ABS system to apply maximum brake pressure for potentially shorter stops.

Intelligent Brake Assist (IBA)¹¹ This available active safety feature continuously monitors and analyzes closing speeds to a vehicle ahead. If the driver does not adequately respond to the Forward Collision Warning and a collision cannot be avoided, IBA will automatically engage the brakes to help reduce collision speed and impact, helping to mitigate the consequences of the accident.

Electronic Brake force Distribution (EBD) To help optimize braking performance for a variety of vehicle loads, EBD adjusts the amount of brake force applied to the front and rear wheels for improved braking performance, reduced front-end "dive" during braking and more even brake wear.

Traction Control System (TCS) The Infiniti QX's Traction Control System senses wheelspin during acceleration and automatically reduces engine output and/or brakes the spinning wheel to help improve traction.

Blind Spot Warning (BSW)¹³ Available Blind Spot Warning helps alert the driver, when attempting to change lanes, to the presence of a detected vehicle in the blind-spot area. An indicator light illuminates, followed by an audible warning if the driver engages the turn signal.

Forward Collision Warning (FCW)¹² Using a laser rangefinder, this available feature helps alert the driver of an imminent forward collision by providing a visual and an audible warning.

Lane Departure Warning (LDW)⁹ This available feature sounds an audible warning when you start to drift out of your lane and Lane Departure Prevention (LDP) lightly applies the appropriate brakes to help ease you back between the right lines.

snug+kids® Snug Kids® The first venture of its kind, Snug Kids is our online guide to selecting and correctly installing a child restraint seat for your Infiniti automobile. Our safety engineers evaluated numerous child restraint seats, installing them in every Infiniti car and SUV. Visit InfinitiUSA.com/snugkids to view or download the results.

Additional Safety Features:

- Zone Body construction with reinforced passenger compartment and front and rear crumple zones
- 3-point height-adjustable front seat belts with pretensioners and load limiters, driver's seat Emergency Locking Retractor (ELR) and passenger's seat ELR and Automatic Locking Retractor (ALR)
- Second-row 3-point height-adjustable seat belts with ELR and ALR (3-point center position seat belt available with split bench seat option)
- Third-row 3-point seat belts with ELR and ALR
- Front-seat Active Head Restraints (in certain rear collisions), move upward and forward to help cushion the head
- LATCH System (Lower Anchors and Tethers for Children) helps simplify proper installation of compatible child restraint seats
- Tire Pressure Monitoring System (TPMS) provides specific information for each tire and low pressure warning¹⁹
- Slide-away brake pedal assembly
- Remote keyless entry system with selective unlocking of driver's door or all doors
- Child safety rear door locks
- Auto Hazard Warning Signal turns on the hazard lights in the event of the air bags being deployed

¹ Availability of specific features is dependent upon the phone's Bluetooth® support. Please refer to your phone owner's manual for details. Bluetooth word mark and logos are owned by Bluetooth SIG, Inc., and any use of such marks by Infiniti is under license. ² Always give your full attention to driving. Avoid operating your iPod® in such a way that you can be distracted during vehicle operation. See Retailer for details. iPod is a registered trademark of Apple Inc. All rights reserved. iPod® not included. ³ Required SiriusXM Satellite Radio, NavTraffic and NavWeather subscriptions sold separately and are continuous until you call SiriusXM to cancel. Installation costs, one-time activation fee, other fees and taxes will apply. NavTraffic available in select markets. Satellite Radio U.S. service and NavWeather service available only to those 18 or older in the 48 contiguous states and D.C. Fees and programming subject to change. Subscriptions governed by Customer Agreement available at siriusxm.com. ©2012 Sirius XM Radio Inc. Sirius, XM and all related marks and logos are trademarks of Sirius XM Radio Inc. ⁴ Never program while driving. GPS mapping may not be detailed in all areas or reflect current road regulations. ⁵ AVM with MOD cannot completely eliminate blind spots and may not detect every object. MOD operates at vehicle speeds below 5 mph. Always check surroundings before moving vehicle. Not a substitute for proper backing procedures. Always turn to check what is behind you before backing up. ⁶ The Front and Rear Sonar System is a convenience, but not a substitute for proper parking procedures and/or backing procedures. Always check that it is safe to do so before moving forward or backing up. May not detect every object in front of or behind you. ⁷ The Advanced Climate Control System with Plasmacluster air purifier helps scrub the air in the vehicle's interior. The system senses exterior odors, suppresses unpleasant interior odors, stops the inflow of external odors and helps keep the cabin smelling fresh, but does not always eliminate odors. ⁸ Intelligent Cruise Control (Full-Speed Range) is not a collision avoidance system or warning device. Designed to use limited braking. Failure to apply the brakes could result in an accident. ⁹ The Lane Departure Warning/Lane Departure Prevention Systems operate only when the lane markings are clearly visible on the road. Speed limitations apply. See owner's manual for more details. ¹⁰ Distance Control Assist helps maintain a distance to the vehicle in front under certain conditions. Not a collision avoidance system. Failure to apply the brakes could result in an accident. ¹¹ IBA is not a collision avoidance system. It may not provide warning or braking in certain conditions. Never rely solely on IBA. ¹² FCW cannot prevent accidents due to carelessness or dangerous driving techniques. Always drive safely. ¹³ The Blind Spot Warning/Blind Spot Intervention Systems are not substitutes for proper lane change procedures. The systems will not prevent contact with other vehicles or accidents. It may not detect every vehicle or object around you. ¹⁴ When towing at or near Maximum Trailer Weight, the allowable vehicle cargo and/or number of passengers is reduced because it is necessary to stay below the Gross Combined Weight Rating and the Gross Axle Weight Rating. If the vehicle has cargo and passengers, the allowable Maximum Trailer Weight is reduced. See your Infiniti Towing Guide and owner's manual for proper use. ¹⁵ 2013 EPA Fuel Economy Estimates. Actual mileage may vary with driving conditions. Use for comparison only. ¹⁶ Cargo and load capacity limited by weight and distribution. Always secure all cargo. Heavy loading of the SUV with cargo, especially on the roof, will affect handling and stability of the vehicle. ¹⁷ Covered by Infiniti's Limited Warranty on Genuine Infiniti Accessories for the longer of 12 months/12,000 miles (whichever is earlier) or the remaining period under the 4-year/60,000-mile Infiniti New Vehicle Limited Warranty. Terms and conditions apply. See Warranty Information Booklet for details. ¹⁸ Air bags are only a supplemental restraint system; always wear your seat belt. Even with the occupant-classification sensor, rear-facing child restraints should not be placed in the front-passenger's seat. Also, all children 12 and under should ride in the rear seat properly secured in child restraints, booster seats, or seat belts according to their size. Air bags will only inflate in certain accidents; see your owner's manual for more details. ¹⁹ Tire Pressure Monitoring System is not a substitute for regular tire pressure checks.