



BENTLEY

BENTLEY MOTORS LIMITED,
PYMS LANE, CREWE,
CHESHIRE, CW1 3PL, ENGLAND
WWW.BENTLEYMOTORS.COM

THE NEW
FLYING SPUR



Information Provided by:
 **DEALER**

The New Flying Spur



3500 TU





1900 TU



INTRODUCTION ⁸/ DESIGN ²⁰/ PERFORMANCE ²⁸/
INTERIOR ³⁶/ IN-CAR TECHNOLOGY ⁴²/
PERSONALISING YOUR CAR ⁵⁴/ DESIGNER'S CHOICE ⁸⁰/
ACCESSORIES & BENTLEY COLLECTION ⁹⁴/
EVENTS & FINANCE ⁹⁶/ OVER TO YOU ⁹⁸/
SPECIFICATIONS AND OPTIONS ¹⁰⁰

Photography – cars illustrated:

Flying Spur W12:
Brodgar
Portland and Burnt Oak leather interior
Dark Stained Burr Walnut veneer

Flying Spur V8:
Moonbeam
Beluga and Linen leather interior
Dark Fiddleback Eucalyptus veneer



The luxury you demand.
The performance you expect.

The Bentley Flying Spur is a remarkable luxury car, for one simple reason: it is also a remarkable performance car. Offering serene comfort in a vehicle that can reach speeds of 200 mph, it is born of the belief that nothing is impossible; that the twin objectives of luxury and power can, if relentlessly pursued, be achieved.





The W12.

The Flying Spur W12 articulates a clear expression of uncompromising performance and luxury.

Designed to exude elegance at every turn, its sophisticated silhouette conceals cutting-edge technology and near-limitless Bentley power, with a 6.0 litre W12 engine producing 616 bhp and a maximum torque of 800 Nm. It may surprise some, but this spacious, refined sedan can propel its occupants from 0-60 mph in just 4.3 seconds.

Inside the cabin, however, it becomes clear that there is more to this car than just its capability on the road. Together, the cutting-edge technology and flawless craftsmanship secure its undeniable status as one of the world's most luxurious sedans.

The W12 Mulliner.

The Flying Spur W12 Mulliner harmonises an exquisite combination of luxury, personalisation and performance.

In the early days of the motor car, Mulliner became the coachbuilder of choice for Britain's discerning motorists, many of whom drove Bentleys. Mulliner craftsmanship soon became legendary and eventually the company became part of Bentley in 1959.

Today, the Flying Spur W12 Mulliner continues this proud tradition of handcrafted excellence. In addition to the luxurious specification of the standard Flying Spur W12, it provides a wealth of extra interior and exterior options, alongside handcrafted details throughout the car.

The Flying Spur is a remarkable, handcrafted luxury sedan. The Flying Spur W12 Mulliner takes that craftsmanship one step further.



Information Provided by

DEALERX



The new V8.

With its commanding upright grille, sharp fender wing vents and the Flying Spur's trademark muscular stance, the new Flying Spur V8 adds a new chapter to a story of uncompromising power and refinement.

A potent 500 bhp, 4.0 litre, twin-turbo V8 engine produces remarkable power and torque (660 Nm). With Bentley's renowned all-wheel drive and a smooth 8-speed quickshift transmission, this is speed with sophistication; an unforgettable experience, whether you're in the back or you're behind the wheel.

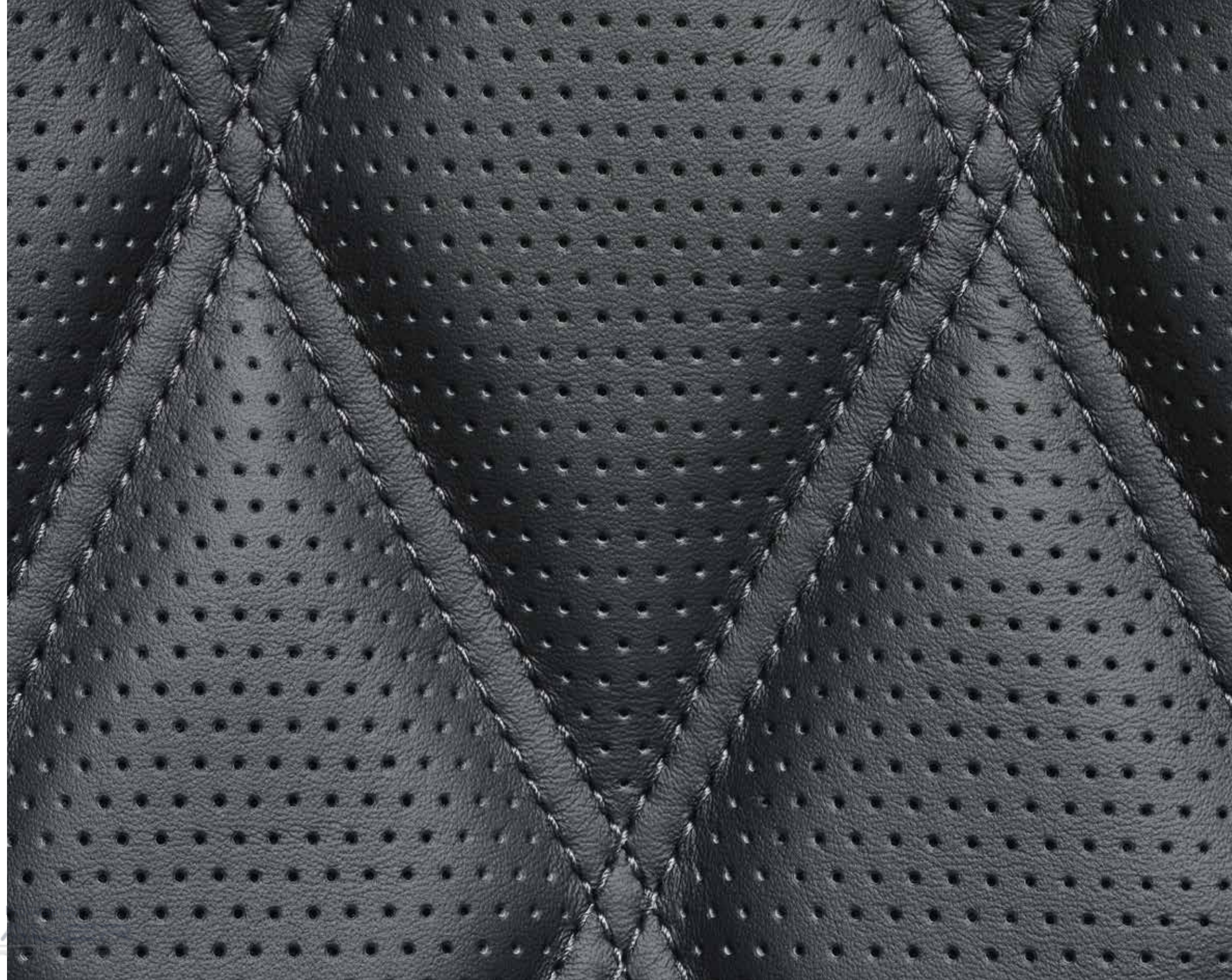
In short, the all-new Bentley Flying Spur V8 offers a leaner, yet still luxurious alternative to its more powerful W12 sibling. For those with a love of the famous V8 exhaust note, the world's most exhilarating luxury sedan has finally arrived.

The new V8 Mulliner.

The new V8 Mulliner model takes the already-exclusive Flying Spur V8 and propels its specification to new heights of Bentley luxury.

It brings additional options for both exterior and interior, such as 20" 5-spoke alloy wheels, diamond quilted seats and door panels with perforated hide, a knurled sports gear lever and drilled alloy sports pedals – every detail crafted to emphasise the personality of this remarkable car.

Mulliner craftsmanship is evident throughout the cabin while, in common with all Flying Spur models, the full extent of Bentley's in-car technology has been made available to the car's occupants. Consider it the ultimate luxury V8.





Mulliner features.

- Diamond quilted seats and door panels with perforated hide
- Knurled sports gear lever
- Drilled alloy sports pedals
- Crafted to emphasise performance and its sporting look
- Jewel fuel and oil filler caps
- Bright boot finisher
- Additional veneer choices available
- Embroidered Bentley "wings" to the front and rear headrests



DESIGN





A statement of intent.

With its sharply defined body shape, the Flying Spur is a commanding presence on the road. The Bentley marque's characteristic curves meet crisp, clean new edges in a remarkably sleek silhouette.

Elegant it certainly is. Yet the power line running down the side of the body, the strong rear haunch and the wraparound tail lamps betray the reserves of power concealed beneath the car's sculpted bonnet.

The Flying Spur: a powerful design statement and an extraordinary luxury sedan.





The facts.

- Sharp new edges to body
- Sports feature line
- Signature Bentley radiator grille
- Jewel front headlamps
- Wraparound tail lamps with single, elliptical LEDs
- Choice of over 100 exterior colours
- Bentley 'B' styled front fender wing vent



PERFORMANCE



As powerful as it is luxurious.

The Flying Spur immerses its occupants in absolute luxury. It is also built to deliver great power when needed.

Choose the 6.0 litre W12 engine and experience near-limitless power: 616 bhp and a maximum torque of 800 Nm. It can propel the Flying Spur from 0-60 mph in 4.3 seconds – and on to a top speed of 200 mph.

The latest 4.0 litre V8 option offers exhilaration of a different sort, coupling a maximum speed of 183 mph with even greater fuel efficiency.

Whichever engine you choose, the same 8-speed transmission ensures the car is always in the optimum gear, so it is responsive at low speeds and incredibly smooth, even through multiple gear changes. A new engine management system gives the driver total control of the effortless power that is always available, while also delivering a better range.

With its exquisite interior and the power it places at your fingertips, nothing brings luxury and performance together like the Flying Spur.





W12: the facts.

- 6.0 litre W12 engine producing a maximum power of 616 bhp (625 PS)
- 8-speed transmission
- All-wheel drive with 40:60 front to rear torque split
- Computer controlled self-levelling air suspension
- Maximum torque: 800 Nm from 1,700 rpm
- Maximum speed: 200 mph (322 km/h)
- 0-60 mph in 4.3 seconds (0-100 km/h in 4.6 seconds)

V8: the facts.

- 4.0 litre V8 engine producing a maximum power of 500 bhp (507 PS)
- 8-speed transmission
- All-wheel drive with 40:60 front to rear torque split
- Maximum torque: 660 Nm from 1,750 rpm
- Revised chassis hardware and software
- Maximum speed: 183 mph (295 km/h)
- 0-60 mph in 4.9 seconds (0-100 km/h in 5.2 seconds)







Some journeys are simply not long enough.

Spend time in the Flying Spur and you might not want to get out.

The interior represents a unique marriage of traditional craftsmanship and advanced technology. You can see it in the mirror-matched veneer waistrails and dashboard, the matching veneered glasses case in the console and the picnic tables behind the front seats. You can experience it when you pick up the Touch Screen Remote or connect to the internet via the optional in-car Wi-Fi hub.

From the chrome organ stop air vent controls to the Rear Seat Entertainment system, it can take some time to appreciate everything inside the Flying Spur. It could even be worth making those first few trips a touch longer.





The facts.

- Hand upholstered leather seats
- Wide selection of interior hide colours
- Twin stitched hide interior
- Generous legroom for every occupant
- Ethically sourced, mirror-matched veneers
- Chrome organ stop air vent controls
- Touch Screen Remote control





Live your digital life on the road.

The Flying Spur has a touchscreen front Infotainment system which allows both driver and front passenger to operate the navigation system and adjust the audio, telephone, ride and comfort settings. With the optional Multimedia Specification, the rear seats include DVD players, wireless headphones and LCD screens, along with ports enabling you to connect consoles, tablets, cameras, music players and mobile phones. This option also provides the Flying Spur with its own Wi-Fi hub, providing internet access for tablets, laptops and phones – and the internal 64 GB hard drive has enough room to share practically anything that can be stored on a modern day digital device.

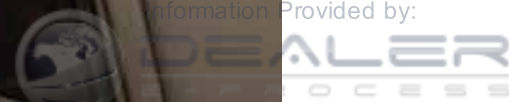




Optional Multimedia Specification: the facts.

- Wi-Fi hub for internet access
- 64 GB hard drive for storing documents, music, videos and other data
- Wireless headphones for the rear seats
- 10" 1,024x600 LCD screens to the back of the front seats
- Top loading DVD players with SD, HDMI and USB ports

Information Provided by:



Now you can lead from the back.

Situated in the console at the back of every Flying Spur lies a detachable, Touch Screen Remote. Relaxing in the hand upholstered rear seats, passengers can adjust the climate settings, seat heating and ventilation, radio and navigation system and optional Multimedia Specification. Back seat drivers have never enjoyed so much control.





Touch Screen Remote: the facts.

- Heating, ventilation and air conditioning controls
- Seat heating control
- Radio and navigation system controls
- Multimedia control (when Multimedia Specification is selected)
- Vehicle journey information
- Control for seat ventilation (where fitted)



Naim for Bentley sound system.

The Naim for Bentley Premium Audio System was designed with the aim of delivering the best in-car audio in the world. Each of the Balanced Mode Radiator (BMR) speakers combine the functions of a separate tweeter and midrange speaker in one unit. Sited in the fascia and rear quarter panels, they make it possible to direct the sound with accuracy, while providing greater clarity across the whole audible spectrum. The result is incredible sound, wherever you sit in the car.



Naim sound system: the facts.

- 1,100 Watt amplifier (13 channel)
- 8 enhanced DSP modes
- 11 Naim speakers including dual Naim subwoofers
- Dynamic equalisation
- Speed dependent volume control
- Theatre surround-sound experience



There may never be another car like yours.

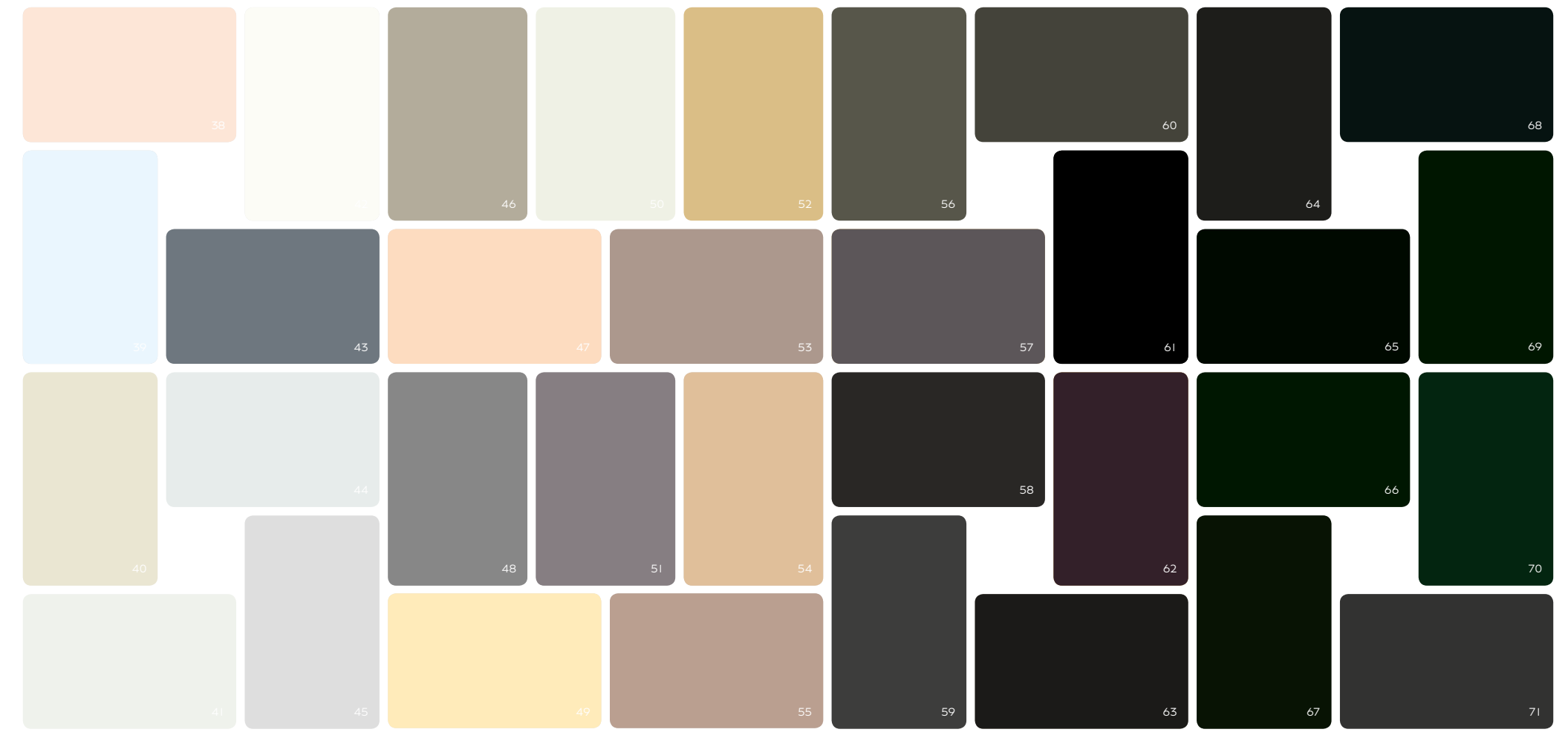
There are countless ways to make your Flying Spur your own. For the exterior, you can choose from over 100 colours. Inside, the choice widens, with a huge range of hides and veneers to complement options for seat sandwich piping, contrast stitching, cross stitching and cross banding. The options are many; the combinations virtually limitless.

You can experiment online now, using the configurator at BentleyConfigurator.com. Alternatively, contact your local Bentley representative. Together, we can ensure that we create a Bentley unlike any other.

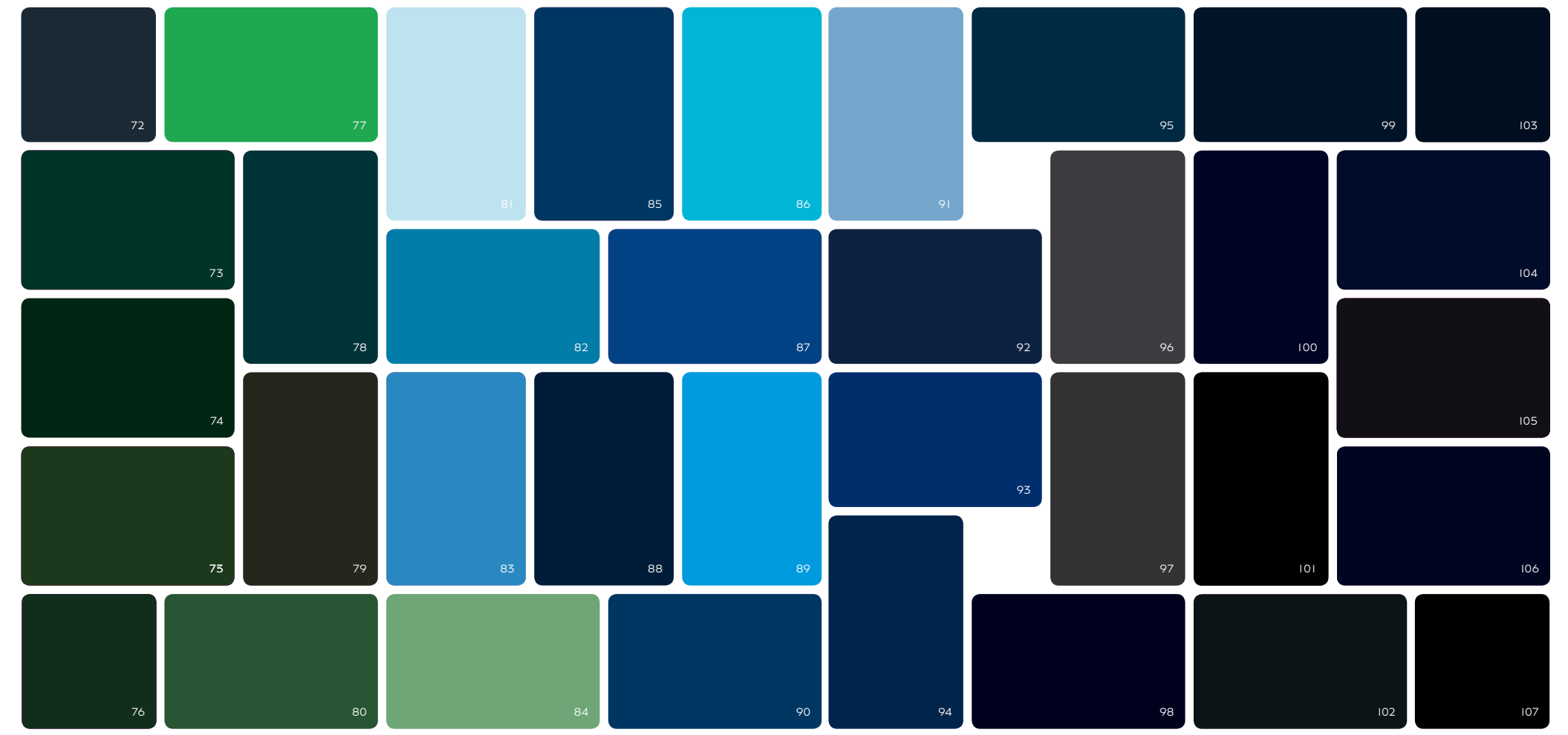




- 1 Violette
- 2 Grey Violet
- 3 Pale Velvet
- 4 Heather
- 5 Black Velvet
- 6 Azure Purple
- 7 Magenta
- 8 Passion Pink
- 9 Rubino Red
- 10 Sunset
- 11 Damson
- 12 Light Claret
- 13 Burgundy
- 14 Dragon Red
- 15 Umbrin Red
- 16 St. James' Red (Pearlescent)
- 17 **St. James' Red (Solid)***
- 18 Candy Red
- 19 Orange Flame
- 20 Claret
- 21 Light Havana
- 22 Amber
- 23 Burnt Orange
- 24 Bronze
- 25 Continental Yellow (Solid)
- 26 Monaco Yellow (Solid)
- 27 **Havana***
- 28 Sand
- 29 Sunburst Gold
- 30 Special Magnolia (Pearlescent)
- 31 Gazelle
- 32 Extreme Silver (Satin)
- 33 Old English White (Solid)
- 34 Special Magnolia (Solid)
- 35 Breeze
- 36 Citric (Solid)
- 37 Magnolia (Solid)



- 38 Silver Storm
- 39 Silver Frost
- 40 Ghost White (Pearlescent)
- 41 White Satin
- 42 Ice
- 43 **Hallmark***
- 44 Arctica (Solid)
- 45 **Moonbeam*†**
- 46 **White Sand***
- 47 Extreme Silver
- 48 Light Grey (Satin)
- 49 Porcelain
- 50 **Glacier White (Solid)*†**
- 51 Silver Tempest
- 52 Sandstone
- 53 Dove Grey (Solid)
- 54 Light Gazelle
- 55 Pale Brodgar
- 56 Venusian Grey
- 57 **Dark Cashmere***
- 58 Dark Grey (Satin)
- 59 Tungsten
- 60 Light Tudor Grey
- 61 Burnt Oak
- 62 Arabica
- 63 Brodgar
- 64 **Granite***
- 65 **Cumbrian Green***
- 66 Barnato (Solid)
- 67 **Midnight Emerald***
- 68 Light Onyx
- 69 Brewster Green (Solid)
- 70 British Racing Green 4 (Solid)
- 71 Anthracite Satin



- 72 Storm Grey
- 73 Spruce
- 74 Verdant
- 75 Light Emerald
- 76 Pale Emerald
- 77 Apple Green
- 78 Aegean Blue
- 79 Cypress
- 80 Alpine Green
- 81 Glacier Blue (Solid)
- 82 Light Windsor Blue
- 83 **Silverlake***
- 84 Aurora
- 85 Portofino
- 86 Aquamarine
- 87 Neptune
- 88 Light Sapphire
- 89 Kingfisher
- 90 Pale Sapphire
- 91 Fountain Blue
- 92 Peacock
- 93 Sequin Blue
- 94 Moroccan Blue
- 95 **Blue Crystal***
- 96 **Thunder****
- 97 Anthracite
- 98 **Meteor***
- 99 Windsor Blue
- 100 **Dark Sapphire*†**
- 101 **Onyx*†**
- 102 Titan Grey
- 103 **Beluga (Solid)*†**
- 104 Oxford Blue (Solid)
- 105 Black Crystal
- 106 Black Sapphire
- 107 Royal Ebony

* W12 standard colour. † V8 standard colour. All other colours available as a cost option. Please note, the colours reproduced are for representation purposes only and therefore vary slightly from the actual vehicle.

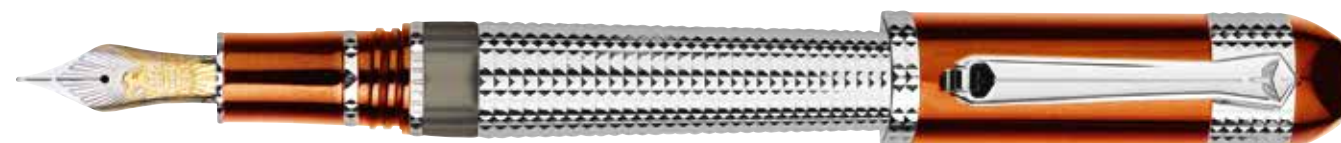
The finest finish for your car.



Whatever your choice of colour, many hours will be spent ensuring a flawless finish for your Flying Spur. Whether you opt for solid, metallic, pearlescent or satin paint, the time invested in the way your car looks will be apparent for years to come.

Bring us a colour and we'll match it.

We offer a choice of over 100 exterior colours. But even with such a wide choice, you may find you don't see exactly the colour you're looking for. Fortunately, the Bentley paint specialists are able to match any colour you bring to them – and reproduce it upon the mirror-like finish of your Bentley's bodywork.



Duotone colour collection.

Duotone paint finishes offer customers the opportunity to create an even more individual exterior and make their Flying Spur distinctly their own. The Bentley Colour and Trim team have specially developed a number of colours that accentuate the styling lines and provide the perfect canvas for duotones. Customers can choose from a palette of complementary colours offering light over dark or dark over light, both of which are meticulously applied and finished.



Example Shown – Moonbeam over Tungsten (light over dark).



Example Shown – Brodgar over Pale Brodgar (dark over light).



Duotones are available as a cost option.
Please note, the colours reproduced are for representation purposes only and therefore vary slightly from the actual vehicle.

Fine line colour collection.



Fine lines can add a distinctive flourish to your Flying Spur, complementing your chosen colour and interior trim. Every fine line applied to your Bentley will be painted by hand.

You can choose from a range of 28 fine line colours for your finishing touch.



Wheels.

Flying Spur wheels are available in a range of designs and either a painted or polished finish. Just like the rest of the Flying Spur exterior, they were all designed at Crewe, so they match the car's proportions perfectly. For full all-weather capability, winter compound tyres are also available from your Bentley representative.



V8 WHEELS HAVE RED CENTRE BADGES



19" CLASSIC ALLOY WHEELS
- PAINTED*



20" 5-SPOKE ALLOY WHEELS
- PAINTED**



21" 6 TWIN-SPOKE ALLOY WHEELS
- PAINTED



21" 10-SPOKE PROPELLER ALLOY WHEELS
- PAINTED



21" 5-SPOKE TWO-PIECE ALLOY WHEELS
- PAINTED**



19" CLASSIC ALLOY WHEELS
- PAINTED AND DIAMOND TURNED*



21" 6 TWIN-SPOKE ALLOY WHEELS
- POLISHED



21" 10-SPOKE PROPELLER ALLOY WHEELS
- POLISHED



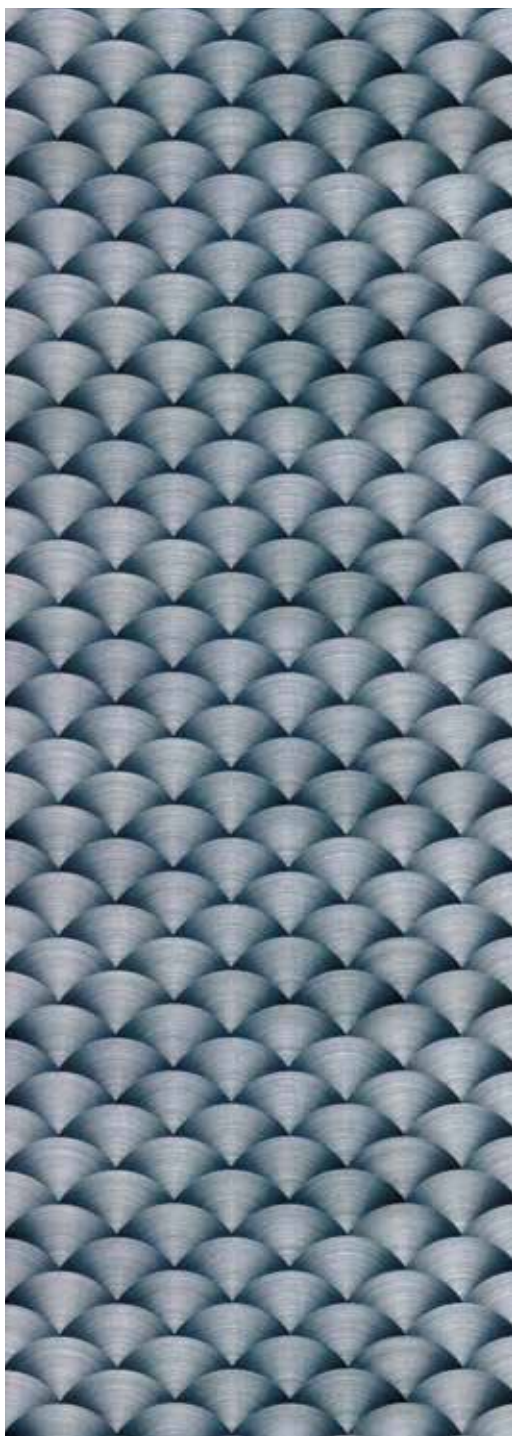
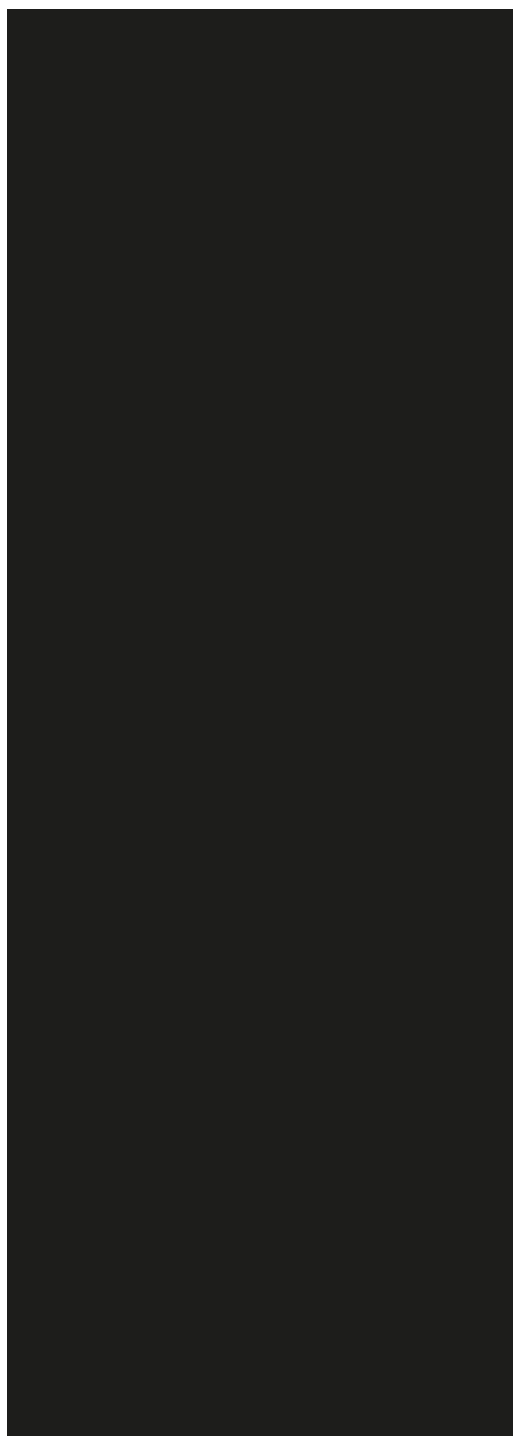
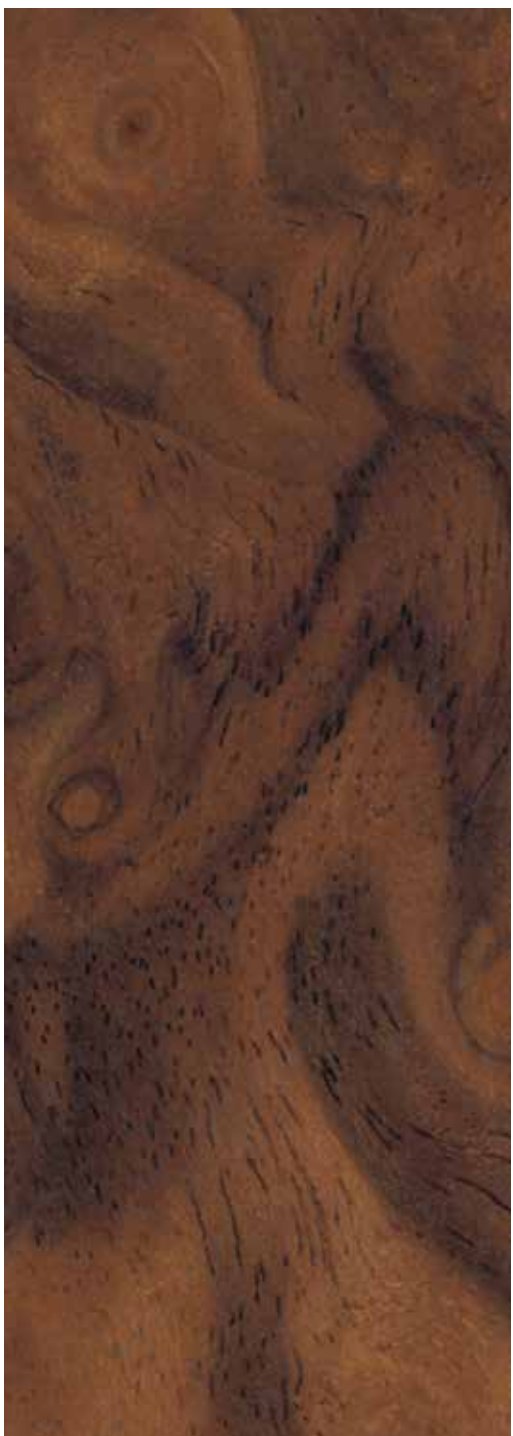
21" 5-SPOKE TWO-PIECE ALLOY WHEELS
- POLISHED



Interior veneer.

All the wood veneer used in the Flying Spur cabin is ethically sourced. Cured for 72 hours, it is treated with five layers of clear lacquer to enhance its natural beauty. The result is a series of stunning, mirror-matched surfaces that flow seamlessly into the soft, tactile leather. It takes 80 years for the burr root ball of a walnut tree to reach maturity – and just weeks in the Bentley wood shop to achieve immortality.





Tamo Ash

Chestnut

Madrona

Burr Walnut*

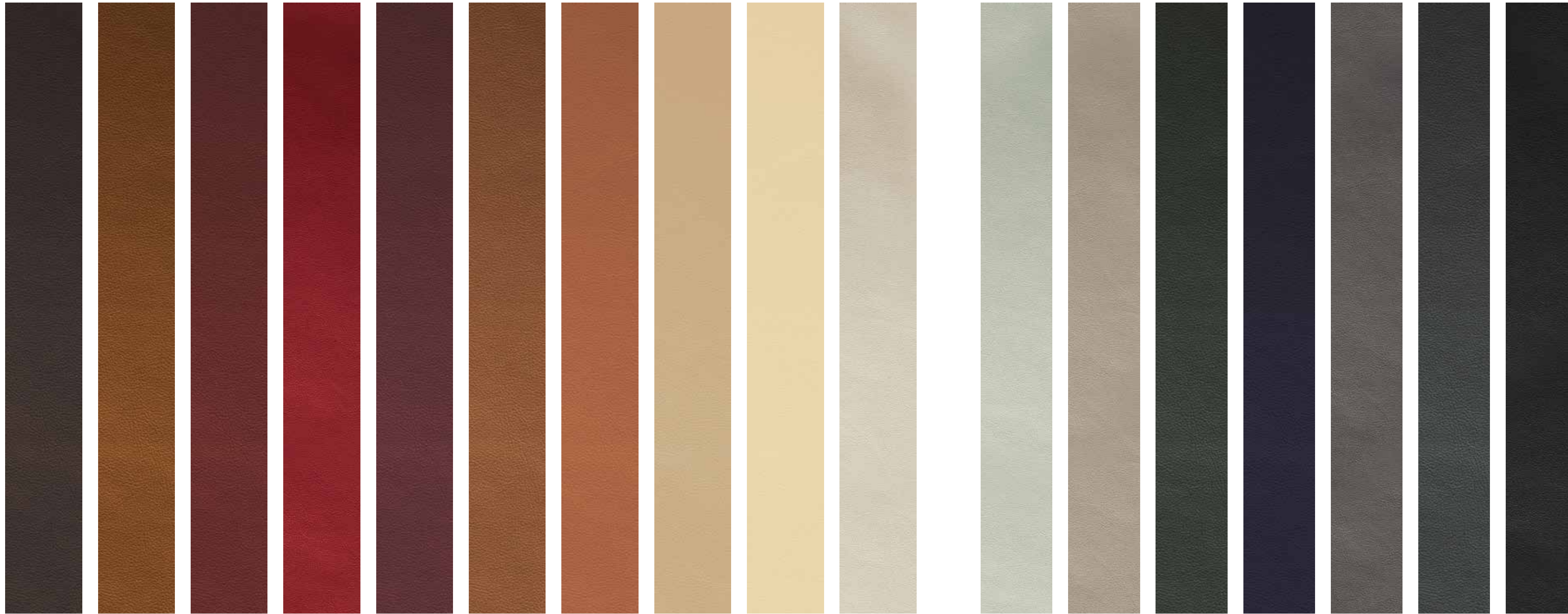
Dark Fiddleback Eucalyptus†

Dark Stained Burr Walnut

Piano Black

Bright Tint Aluminium

* W12 standard veneer. † V8 standard veneer. All other veneers available as a cost option. Please note, the colours reproduced are for representation purposes only and therefore vary slightly from the actual vehicle.



Burnt Oak Dark Bourbon Fireglow Hotspur Damson Saddle Newmarket Tan† Saffron Magnolia Linen Breeze Portland Cumbrian Green Imperial Blue† Porpoise† Brunel Beluga†

Interior hides.

Hides are natural products, but Bentley craftsmen are perfectionists. They select only A-Grade leather from northern European herds that graze at higher altitudes, where insect bites and other disfiguring marks are less likely to be found on the animals. Bentley has never resorted to surface embossing to disguise imperfections.

Before delivery to Crewe, the hides undergo a traditional tanning process, giving them a rich, mature leather aroma. Only then is each skin pre-tensioned and examined, before it is passed to the upholsterers.

There are many hides and colour combinations to choose from, but whichever you select, you can rely on the exacting standards of the craftsmen who selected them before you.

W12 – all hide colours available as standard. † V8 standard colour. All other colours available as a cost option. Please note, the colours reproduced are for representation purposes only and therefore vary slightly from the actual vehicle.

Sunroof.

The cabin of the Flying Spur is whisper-quiet, insulating its occupants from the rigours of the road. But there are times, of course, when you want to let the sunshine in. The optional tilt-opening, tinted glass sunroof floods the interior with light. The ultra-slim mechanism, engineered exclusively for the Flying Spur, has been designed to retain the fast, sweeping roof profile. To provide welcome shade from the sun on hot days, a colour-matched blind closes silently at the touch of a button.





Interior options.

- Comfort Specification*
- Contrast stitching
- Cross-stitching
- Seat sandwich piping
- Veneer matched storage case
- Veneered picnic tables
- Bottle cooler
- Deep pile overmats
- Leather and veneer steering wheel
- Climate boost

* Please see Comfort & Convenience on pages 101 and 103 for further information.



In the right combinations, colours come to life.

When colours are combined successfully, the result is both striking and natural. Even the subtlest adjustment of one hue can unlock the beauty of those around it. Here, our designers demonstrate the power of a well-planned palette, with a selection of their personal favourites.





'Almost Midnight'

Nothing says sophistication like a palette of rich, dark colours that complement one another as well as Brodgar, Burnt Oak and a Dark Stained Burr Walnut veneer. Portland hides on the seats bring light, space and contrast to this stylishly cool combination.



Flying Spur W12

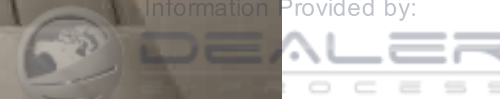


4+1 seat configuration



Exterior colour: Brodgar	Main hide: Portland	Secondary hide: Burnt Oak	Veneer: Dark Stained Burr Walnut
-----------------------------	------------------------	------------------------------	-------------------------------------

Information Provided by:



'Alter Ego'

From the rich yet subtle Damson exterior finish, to the opulent, high-contrast interior combination of Linen and Damson hides, this car invites you to display both sides of your character – all the while maintaining the sense of warmth you expect your Bentley to evoke.



Flying Spur W12 Mulliner



4+1 seat configuration



Exterior colour:
Damson

Main hide:
Linen

Secondary hide:
Damson

Veneer:
Piano Black





'Cool Stone'

The two-tone Portland and Imperial Blue interior provides a subtle counter to the warm sophistication of the car's Light Gazelle exterior paintwork. The rich, reddish tones of the Dark Fiddleback Eucalyptus veneers lend a classic style to an otherwise contemporary combination.



Flying Spur W12 Mulliner



4 seat configuration



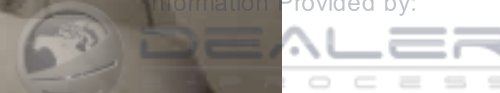
Exterior colour:
Light Gazelle

Main hide:
Portland

Secondary hide:
Imperial Blue

Veneer:
Dark Fiddleback Eucalyptus

Information Provided by:



'Eclipse'

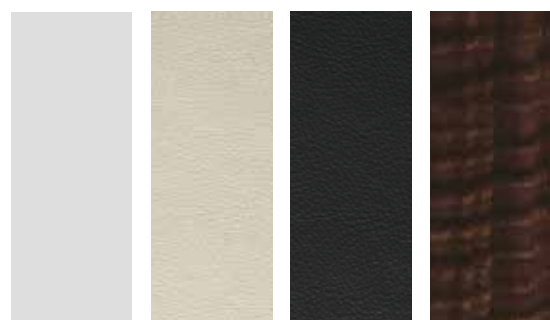
Like a silver shaft of light, the Moonbeam exterior finish of this car catches the eye from afar. Inside, there is nothing to complicate the purity of the theme: Linen and Beluga combine in a subtle yet high-contrast double act, allowing the unmistakable striped grain of the cabin's Dark Fiddleback Eucalyptus veneers to stand out.



Flying Spur V8 Mulliner



4+1 seat configuration



Exterior colour:
Moonbeam

Main hide:
Linen

Secondary hide:
Beluga

Veneer:
Dark Fiddleback Eucalyptus





'Pangea'

The Flying Spur may have been conceived for the city, but its elegant lines betray a wilder side, one brought to the fore here with the use of a rustically-inspired colour scheme. The subtle, dark hue of Cumbrian Green secondary hides boosts the richness of Saddle main hides – the perfect complement to the rich Spruce exterior.



Flying Spur V8



4+1 seat configuration



Exterior colour: Spruce Green	Main hide: Saddle	Secondary hide: Cumbrian Green	Veneer: Dark Stained Burr Walnut
----------------------------------	----------------------	-----------------------------------	-------------------------------------

'Ice Storm'

Designed to turn heads, this Glacier White Flying Spur V8 features an all-red Hotspur interior, for a striking impression of power and warmth. The flame-like grain of the mirror-matched Tamo Ash veneers encircling the cabin completes an exquisite look.



Flying Spur V8 Mulliner



4+1 seat configuration



Exterior colour:
Glacier White

Main hide:
Hotspur

Secondary hide:
Hotspur

Veneer:
Tamo Ash



Accessories.

All accessories for the Flying Spur are tested to Bentley standards, with Crewe's designers and engineers involved in setting the specifications for each one. Accessories include protective personalised car covers for both indoor and outdoor use, self-righting wheel centre badges and winter traction aids for snow and ice. The jewelled Bentley torch features the Bentley 'B' etched into the lens, while a child seat trimmed with Bentley upholstery can even be embroidered with your child's name.

For details of the full accessories range, please contact your Bentley representative.



Valve Caps



Jewelled Torch



Personalised Interior Car Cover



Relaxation Pack



Geoffrey Parker For Bentley Backgammon Set



Flying Spur Model



Anthony Holt 4 Watch Valet Box



Child Seat (Group 1)



Personalised Exterior Car Cover



Personalised Child Seat
(Groups 2-3)



Flying Spur Flat Fold Cufflinks



Breitling For Bentley Desk Clock



Shop.BentleyMotors.com

Bentley Collection.

Bentley is one of the last companies in the world from which you can still commission a bespoke, hand-built car. The Bentley Collection is no different. A beautiful selection of handmade accessories, it includes items bearing artisan brand names such as Breitling for Bentley, Anthony Holt Silversmiths and Geoffrey Parker Games. In addition, a range of leather products has been inspired by the Flying Spur. Taking their design cues from the flowing lines of the collar-style seats and featuring the new Flying B power vent emblem, they add a jewellery-like glamour to the collection.

To view the Bentley Collection in full, please visit our online store at Shop.BentleyMotors.com or visit your local Bentley representative.



Bentley events.

Every year, Bentley runs a variety of events for Bentley drivers, enthusiasts and anyone looking for a closer acquaintance with the Bentley brand. From the exhilaration of the Power on Ice experience, to private tours of some of the most exclusive locations in Britain, our range of events offers something for every intrepid Bentley explorer.

To learn more, visit Events.BentleyMotors.com.



Events.BentleyMotors.com



Tour the Bentley factory in Crewe.

Every morning at 9 am, Bentley opens its doors to a select few for a guided tour of the factory. The visit begins with a walk through the Bentley lineage exhibition, telling Bentley's design story and showcasing some of our most historic cars. Then comes the tour of the production facilities, where you can see new Bentleys in production and meet the craftsmen and women who build them; and, should you wish, discuss any future commissions.

Financing your Flying Spur.

We tailor our finance agreements to ensure you make the most of your investment. While other financiers look only at their customer, our experts create bespoke packages, based not just on your personal circumstances, but also on the car you commission.

To learn more or to book a tour, please contact your local Bentley representative or visit BentleyMotors.com.



Yours for the taking.

The Flying Spur is a milestone in the development of the luxury car. It is also a milestone in the development of the performance car. Yet the story doesn't stop there. The radical new body shape remains recognisably, iconically Bentley. The technology behind the driving experience is unrivalled among vehicles of its kind. And when it comes to transporting passengers in comfort, there is nothing quite like it.

For more information, visit NewFlyingSpur.com or scan the code below.



Flying Spur W12

STANDARD SPECIFICATION

DRIVETRAIN	
Engine:	6.0 litre, twin-turbocharged W12
Max power:	616 bhp / 460 kW / 625 PS @ 6,000 rpm
Max torque:	800 Nm / 590 lb.ft @ 1,700 rpm
Emission Controls:	EU4 / EU5 / EU6 / LEVII / ULEVII emissions compliant
Transmission:	8-speed automatic
Driveline:	Permanent all-wheel drive, 40:60 front/rear split

CHASSIS

- Front: Four link double wishbones, computer controlled self-levelling air suspension, with anti-roll bar
- Rear: Trapezoidal multi-link, computer-controlled self-levelling air suspension, with anti-roll bar
- Air springs with continuous damping control
- Front vented disc brakes 405 x 36 mm (Bentley branded black callipers)
- Rear vented disc brakes 335 x 22 mm (Bentley branded black callipers)
- Brake pad wear indicator
- Electronic park brake with drive away assist
- Brake system with Electronic Stability Programme (ESP), Anti-lock Braking System (ABS), Electronic Brake Force Distribution (EBFD), Hydraulic Brake Assist (HBA), Drag Torque Control (MSR) and aquaplane detection
- Speed sensitive power steering
- Electric tilt and reach adjustment steering column with memory and easy entry functions
- Standard foot pedals

DIMENSIONS & CAPACITIES

Wheelbase:	3,066 mm / 120.7 in
Overall length:	5,299 mm / 208.6 in
Width (across body):	1,984 mm / 78.1 in
Width (including mirrors):	2,207 mm / 86.9 in
Overall height:	1,488 mm / 58.6 in
Kerb weight (EU):	2,475 kg / 5,456 lb
Gross weight:	2,972 kg / 6,552 lb
Front axle weight:	1,590 kg / 3,505 lb
Rear axle weight:	1,460 kg / 3,218 lb
Fuel tank:	90 litres / 20 gallons / 24 US gallons
Boot volume:	475 litres / 16.7 cu ft
Drag:	0.29 Cd
Turning circle (kerb to kerb):	12.1 m

PERFORMANCE

0-60 mph:	4.3 seconds
0-100 mph:	9.5 seconds
0-100 km/h:	4.6 seconds
0-160 km/h:	9.5 seconds
Maximum speed:	200 mph / 322 km/h

Fuel consumption (EU Cycle)	
Urban:	12.6 mpg / 22.4 l/100 km
Extra urban:	27.8 mpg / 10.2 l/100 km
Combined:	19.2 mpg / 14.7 l/100 km
CO ₂ emissions:	343 g/km

Fuel consumption (EPA Cycle)

City driving (US):	12.0 mpg
Highway driving (US):	20.0 mpg
Combined (US):	15.0 mpg

BODY & EXTERIOR

- Steel monocoque body structure
- 17 paint colour choices: St. James' Red, Moonbeam, Beluga, Onyx, Glacier White, Dark Sapphire, Thunder, Granite, Hallmark, White Sand, Havana, Midnight Emerald, Meteor, Blue Crystal, Cumbrian Green, Silverlake and Dark Cashmere
- Bright chrome radiator matrix grille
- Bi-xenon projector headlamps with LED signature day light running lamps, LED main beam supplementation and integrated washer jets
- Full LED rear lamps with ellipse within an ellipse-effect, inner lamp treatment
- Rear fog and reverse lamps integrated into the lower bumper
- Rear high level brake light
- Twilight sensor control and tunnel detection for lighting
- Door area lighting in lower edge of exterior mirrors and entrance lighting in lower edge of each door
- Colour coded electronic adjustable door mirrors with heating power fold and memory functions include signal repeaters
- Power latching to all doors
- Rain sensing windscreen wipers
- Acoustic layer to glass
- Keyless entry and ignition
- Door edge light
- Rear diffuser
- 19" Classic alloy wheel with bright painted and diamond turned finish and comfort tyre (market specific)
- Electronic tyre pressure monitoring system (TPMS)
- Wheel bolts with security bolt
- 'B' chrome wing vent detail on black grille
- Lower front bumper grille in black, with chrome "wing" insert
- Oval chrome exhaust finisher
- Black winged 'B' badge to radiator shell and boot lid
- Black 'B' to wheel centres
- Power open and close boot system

INTERIOR

- Premium grade hide interior, choice of 17 colours: Beluga, Imperial Blue, Porpoise, Newmarket Tan, Saddle, Burnt Oak, Magnolia, Dark Bourbon, Portland, Brunel, Fireglow, Damson, Hotspur, Breeze, Saffron, Cumbrian Green or Linen
- Veneer choice of Burr Walnut or Dark Fiddleback Eucalyptus, to fascia panels, console and door waistrails
- Leather headlining
- Choice of 4 colour splits – mono or 3 duotone
- ISOFIX rear seat fixings
- Short rear console
- Dashboard-mounted clock by Breitling
- Boot carpet in Beluga
- Bullseye air vents with chrome organ stop controls
- Footwell and front and rear console storage illumination
- 4 + 1 seat system with rear outer seats adjustments and fixed section 4 way lumbar adjustment and seat heating for outer seats. Plus 2 position manual headrest height adjustment to outer seats
- 2 x 12 V sockets in the front face of the middle of the rear seat and a rear arm rest with top lid and twin cup holder
- Driver's front seat 14-way adjustment including memory and lumbar
- Passenger front seat 14-way adjustment including memory and lumbar
- Tread plates with build plaque insert
- Twin front arm rest
- Electrically operated blinds for rear windows

TECHNOLOGY

- Front touch screen Infotainment system with 8" high resolution screen and incorporating AM/FM radio, HDD navigation, external media interface, single DVD/CD slot, single SD card slot, integrated HVAC controls, telephone control with Bluetooth® wireless connectivity, suspension settings and TPMS features – voice activation on Infotainment features (market specific)
- Touch Screen Remote (TSR) in the rear, located in the rear of the centre console and presented in a cradle. Main interface for rear environment control, media interface with front Infotainment system and provides vehicle information. (When Multimedia Specification is chosen then the TSR also controls this technology feature)
- 8 channel, 8 speaker audio system with Balanced Mode Radiator (BMR) speakers
- Multi-zone automatic climate control system
- Park distance control with graphic on Infotainment screen and audible warning
- Driver and front passenger airbags with front passenger deactivation and driver's knee airbag (market specific)
- Front and rear curtain and thorax airbags
- Volumetric ultrasonic alarm

FLYING SPUR W12 MULLINER

(in addition to standard specification)

- Choice of 21" 5-spoke Two-piece alloy wheel – painted or optional polished finish (Flying Spur W12 Mulliner is also available with any other alloy wheel)
- Lower front bumper grille in chrome, with chrome "wing" insert (no cost option)
- Veneer choice of Burr Walnut, Dark Fiddleback Eucalyptus, Piano Black or Dark Stained Burr Walnut
- Leather indented headlining
- Diamond quilting to the seat centres and door casings
- Knurled sports gear lever
- Sports drilled foot pedals
- Embroidered Bentley "wings" to the front and rear headrests (these can be selected as a no cost option)
- Jewel fuel and oil filler caps
- Bright boot finisher

This is a detailed specification of standard equipment for Flying Spur W12 and Flying Spur W12 Mulliner. Slight variation may occur in some markets. Please consult your Bentley representative for details.

OPTIONAL SPECIFICATION

EXTERIOR OPTIONS:

WHEELS & TYRES

- 19" Classic alloy bright painted and comfort tyre (optional where not standard)
- 19" Classic alloy bright painted with diamond turned and comfort tyre (optional where not standard)
- 20" 5-spoke alloy wheel – painted (optional where not standard)
- 21" 10-spoke Propeller alloy wheel – painted
- 21" 10-spoke Propeller alloy wheel – polished with painted centre cap
- 21" 6 Twin-spoke alloy wheel – painted
- 21" 6 Twin-spoke alloy wheel – polished with painted centre cap
- 21" 5-spoke Two-piece alloy wheel – painted (part of W12 Mulliner Specification)
- 21" 5-spoke Two-piece alloy wheel – polished (option on W12 Mulliner Specification)
- 20" space saver spare wheel and tyre in lieu of tyre inflation kit
- Standard brakes with red callipers
- Carbon ceramic brakes with black callipers

GLASS & ROOF

- Electric glass tilt and slide sunroof (no cost option)
- Electric glass tilt and slide sunroof with solar cells to power additional cooling

OTHER EXTERIOR OPTIONS

- 100+ additional exterior paint colours including new Damson paint
- Bespoke colour matching service
- Bright lower front bumper grille on W12

INTERIOR OPTIONS:

4 SEATER SPECIFICATION

- Full-length centre console with closing tambour door
- Plus 2 position manual headrest height adjustment to outer seats, 2 x 12 V sockets in the front face of the middle of the rear seat and a rear arm rest with top lid and twin cup holder

OTHER INTERIOR OPTIONS

- Choice of additional veneers: Chestnut, Madrona, Tamo Ash, Dark Stained Burr Walnut or Piano Black
- Bright Tint Aluminium to fascia and door waistrails
- Contemporary cross-banding to fascia, door waistrails and picnic tables if chosen (only available with Burr Walnut and Chestnut veneers)
- Chrome inlay to waistrails
- Veneer storage case
- Veneered picnic tables to rear of front seats
- Veneered picnic tables with vanity mirrors to rear of front seats
- Deep pile overmats front and rear (in lieu of standard mats) or Lambswool rugs – front and rear
- Boot carpet matched to main or secondary hide
- Contrast binding to interior carpet overmats
- Contrast binding to boot carpets (only available with contrast binding to overmats)
- Contrast stitching to seats, headrests, door casings, fascia and centre console
- Additional contrast stitching to steering wheel (contrast stitching or hand cross stitching option must be selected)
- Hand cross stitching to the seats, headrests and door casings
- Piping includes sandwich piping and single stitch to seats and headrests
- 3-spoke dual tone hide trimmed steering wheel (except in Breeze)
- 3-spoke heated, single tone hide trimmed steering wheel
- 3-spoke wood and hide steering wheel available in: Piano Black, Burr Walnut, Madrona, Dark Stained Burr Walnut, Chestnut or Tamo Ash
- Knurled sports gear lever
- Sports drilled foot pedals
- Embroidered Bentley "wings" to the front and rear headrests
- Jewel fuel and oil filler caps
- Column-mounted paddle switches for tiptronic gear selection
- Bright boot finisher

COMFORT & CONVENIENCE:

CONVENIENCE SPECIFICATION

- Rear view camera (market specific)
- Adaptive cruise control
- Valet key
- Privacy handset with 2 cradles and SIM card reader

COMFORT SPECIFICATION

- Front and rear seat ventilation and massage
- Front seat cushion extension adjustment
- Front passenger seat movement from the rear

OTHER CONVENIENCE OPTIONS

- Climate Boost for rear seat passengers (market specific)
- Adaptive cruise control
- Valet key
- Privacy handset with 2 cradles and SIM card reader
- TV Tuner (market specific)
- Multimedia Specification – rear seat entertainment system including 2 x 10" LCD screens located on the rear of the front seats, 2 x DVD players with integrated SD slot and USB port and HDMI input. Two wireless headphones. Also includes Wi-Fi hot spot (via active SIM) and 64 GB internal storage
- Naim for Bentley Premium Audio System – with enhanced surround sound for the ultimate audio experience
- Rear bottle cooler – located behind the rear centre arm rest provides cooling ability for drinks
- GPS tracking system provision in addition to standard alarm system (market specific)
- GPS tracking system full fitment, in addition to standard alarm system (market specific)
- Remote control garage / electronic gate opener
- 6-disc CD changer fitted in glovebox
- Two ashtrays and three cigar lighters
- Rear view camera
- First aid kit and warning triangle
- Battery charger

MULLINER OPTIONS

- Personalised tread plates
- 2 hide cushions

Flying Spur V8

STANDARD SPECIFICATION

DRIVETRAIN

Engine:	4.0 litre, twin-turbocharged V8
Max power:	500 bhp / 373 kW / 507 PS @ 6,000 rpm
Max torque:	660 Nm / 487 lb.ft @ 1,700 rpm
Emission Controls:	EU4 / EU5 / EU6 / LEVII / ULEVII emissions compliant
Transmission:	8-speed automatic
Driveline:	Permanent all-wheel drive, 40:60 front/rear split

CHASSIS

- Front: Four link double wishbones, computer controlled self-levelling air suspension, with anti-roll bar
- Rear: Trapezoidal multi-link, computer-controlled self-levelling air suspension, with anti-roll bar
- Air springs with continuous damping control
- Front vented disc brakes 405 x 36 mm (Bentley branded black callipers)
- Rear vented disc brakes 335 x 22 mm (Bentley branded black callipers)
- Brake pad wear indicator
- Electronic park brake with drive away assist
- Brake system with Electronic Stability Programme (ESP), Anti-lock Braking System (ABS), Electronic Brake Force Distribution (EBFD), Hydraulic Brake Assist (HBA), Drag Torque Control (MSR) and aquaplane detection
- Speed sensitive power steering
- Electric tilt and reach adjustment steering column with memory and easy entry functions
- Standard foot pedals

DIMENSIONS & CAPACITIES

Wheelbase:	3,066 mm / 120.7 in
Overall length:	5,299 mm / 208 in
Width (across body):	1,984 mm / 78.1 in
Width (including mirrors):	2,207 mm / 86.9 in
Overall height:	1,488 mm / 58.6 in
Kerb weight (EU):	2,417 kg / 5,329 lb
Gross weight:	2,972 kg / 6,552 lb
Front axle weight:	1,590 kg / 3,505 lb
Rear axle weight:	1,460 kg / 3,218 lb
Fuel tank:	90 litres / 20 gallons / 24 US gallons
Boot volume:	475 litres / 16.7 cu ft
Drag:	0.29 Cd
Turning circle (kerb to kerb):	12.1 m

PERFORMANCE

0-60 mph:	4.9 seconds
0-100 mph:	11.2 seconds
0-100 km/h:	5.2 seconds
0-160 km/h:	11.2 seconds
Maximum speed:	183 mph / 295 km/h

Fuel consumption (EU Cycle)	
Urban:	17.8 mpg / 15.9 l/100 km
Extra urban:	35.3 mpg / 8.0 l/100 km
Combined:	25.9 mpg / 10.9 l/100 km
CO ₂ emissions:	254 g/km

Fuel consumption (EPA Cycle)

City driving (US):	14.0 mpg
Highway driving (US):	24.0 mpg
Combined (US):	17.0 mpg

BODY & EXTERIOR

- Steel monocoque body structure
- 7 paint colour choices: St. James' Red, Moonbeam, Beluga, Onyx, Glacier White, Dark Sapphire and Thunder
- Bright chrome radiator matrix grille
- Bi-xenon projector headlamps with LED signature day light running lamps, LED main beam supplementation and integrated washer jets
- Full LED rear lamps with ellipse within an ellipse-effect, inner lamp treatment
- Rear fog and reverse lamps integrated into the lower bumper
- Rear high level brake light
- Twilight sensor control and tunnel detection for lighting
- Door area lighting in lower edge of exterior mirrors and entrance lighting in lower edge of each door
- Colour coded electronic adjustable door mirrors with heating power fold and memory functions include signal repeaters
- Power latching to all doors
- Rain sensing windscreen wipers
- Acoustic layer to glass
- Keyless entry and ignition
- Door edge light
- Rear diffuser
- 19" Classic alloy wheel with bright painted finish
- Electronic tyre pressure monitoring system (TPMS)
- Wheel bolts with security bolt
- 'B' chrome wing vent detail on black grille
- Lower front bumper grille in black, with black "wing" insert
- Twin figure-of-eight chrome exhaust finishers
- Red winged 'B' badge to radiator shell and boot lid
- Red 'B' to wheel centres
- Power open and close boot system

INTERIOR

- Premium grade hide interior, choice of 4 colours: Beluga, Imperial Blue, Porpoise or Newmarket Tan
- Dark Fiddleback Eucalyptus veneer as standard to fascia panels, console and door waistrails
- Eliade headlining in 4 colours
- Monotone colour split
- ISOFIX rear seat fixings
- Short rear console
- Dashboard-mounted clock by Breitling
- Boot carpet in Beluga
- Bullseye air vents with chrome organ stop controls
- Footwell and front and rear console storage illumination
- Bench rear seat system, plus 2 position manual headrest height adjustment to outer seats
- 2 x 12 V sockets in the front face of the middle of the rear seat and a rear arm rest with top lid and twin cup holder
- Driver's front seat 14-way adjustment including memory and lumbar
- Passenger front seat 14-way adjustment including memory and lumbar
- 'Bentley' embossed tread plates
- Single front arm rest

TECHNOLOGY

- Front touch screen Infotainment system with 8" high resolution screen and incorporating AM/FM radio, HDD navigation, external media interface, single DVD/CD slot, single SD card slot, integrated HVAC controls, telephone control with Bluetooth® wireless connectivity, suspension settings and TPMS features – voice activation on Infotainment features (market specific)
- Touch Screen Remote (TSR) in the rear, located in the rear of the centre console and presented in a cradle. Main interface for rear environment control, media interface with front Infotainment system and provides vehicle information. (When Multimedia Specification is chosen then the TSR also controls this technology feature)
- 8 channel, 8 speaker audio system with Balanced Mode Radiator (BMR) speakers
- Multi-zone automatic climate control system
- Park distance control with graphic on Infotainment screen and audible warning
- Driver and front passenger airbags with front passenger deactivation and driver's knee airbag (market specific)
- Front and rear curtain and thorax airbags
- Volumetric ultrasonic alarm

FLYING SPUR V8 MULLINER

(in addition to standard specification)

- 20" 5-spoke alloy wheel painted (Flying Spur V8 Mulliner is also available with optional 21" 5-spoke Two-piece alloy wheel painted or polished)
- Lower front bumper grille in black, with body coloured "wing" insert
- Interior hide choice of 17 colours: Beluga, Imperial Blue, Porpoise, Newmarket Tan, Saddle, Burnt Oak, Magnolia, Dark Bourbon, Portland, Brunel, Cumbrian Green, Fireglow, Linen, Breeze, Damson, Hotspur or Saffron
- Veneer choice of Dark Fiddleback Eucalyptus, Dark Stained Burr Walnut or Piano Black to fascia panels, console and door waistrails
- Leather indented headlining
- Choice of 4 colour splits – one mono or three duotone
- Diamond quilting to the seat centres and door casings
- Knurled sports gear lever
- Sports drilled foot pedals
- Embroidered Bentley "wings" to the front and rear headrests (these can be selected as a no cost option)
- Jewel fuel and oil filler caps
- Bright boot finisher
- 4+1 seat system (rear seat lumbar, adjustable and heated outer positions)

This is a detailed specification of standard equipment for Flying Spur V8 and Flying Spur V8 Mulliner. Slight variation may occur in some markets. Please consult your Bentley representative for details.

OPTIONAL SPECIFICATION

EXTERIOR OPTIONS:

WHEELS & TYRES

- 19" Classic alloy bright painted and comfort tyre (optional where not standard)
- 19" Classic alloy bright painted with diamond turned and comfort tyre (optional where not standard)
- 20" 5-spoke alloy wheel – painted (optional where not standard)
- 21" 10-spoke Propeller alloy wheel – painted
- 21" 10-spoke Propeller alloy wheel – polished with painted centre cap
- 21" 6 Twin-spoke alloy wheel – painted
- 21" 6 Twin-spoke alloy wheel – polished with painted centre cap
- 21" 5-spoke Two-piece wheel – painted (optional V8 Mulliner Specification)
- 21" 5-spoke Two-piece wheel – polished (optional on V8 Mulliner Specification)
- 20" space saver spare wheel and tyre in lieu of tyre inflation kit
- Standard brakes with red callipers
- Carbon ceramic brakes with black callipers

GLASS & ROOF

- Electric glass tilt and slide sunroof (no cost option)
- Electric glass tilt and slide sunroof with solar cells to power additional cooling

OTHER EXTERIOR OPTIONS

- 100+ additional exterior paint colours including new Damson paint
- Bespoke colour matching service

INTERIOR OPTIONS:

COLOUR SPECIFICATION

- Choice of 13 additional hide colours: Cumbrian Green, Breeze, Damson, Hotspur, Saffron, Saddle, Burnt Oak, Magnolia, Dark Bourbon, Portland, Brunel, Fireglow or Linen
- Choice of 3 duo colour splits

4 SEATER SPECIFICATION

- Full-length centre console with closing tambour door
- Plus 2 position manual headrest height adjustment to outer seats
- 2 x 12 V sockets in the front face of the middle of the rear seat and a rear arm rest with top lid and twin cup holder

OTHER INTERIOR OPTIONS

- Choice of additional veneers: Chestnut, Madrona, Tamo Ash, Dark Stained Burr Walnut, Piano Black or Burr Walnut
- Bright Tint Aluminium to fascia and door waistrails
- Contemporary cross-banding to fascia, door waistrails and picnic tables if chosen (only available with Burr Walnut and Chestnut veneers)
- Chrome inlay to waistrails
- Veneer storage case
- Veneered picnic tables to rear of front seats
- Veneered picnic tables with vanity mirrors to rear of front seats
- Deep pile overmats front and rear (in lieu of standard mats) or Lambswool rugs – front and rear
- Boot carpet matched to main or secondary hide
- Contrast binding to interior carpet overmats
- Contrast binding to boot carpets (only available with contrast binding to overmats)
- Contrast stitching to seats, headrests, door casings, fascia and centre console
- Additional contrast stitching to steering wheel (contrast stitching or hand cross stitching option must be selected)
- Hand cross stitching to the seats, headrests and door casings
- Piping includes sandwich piping and single stitch to seats and headrests
- 3-spoke dual tone hide trimmed steering wheel (except in Breeze)
- 3-spoke heated, single tone hide trimmed steering wheel
- 3-spoke wood and hide steering wheel available in: Piano Black,

Burr Walnut, Madrona, Dark Stained Burr Walnut, Chestnut or Tamo Ash

- Knurled sports gear lever
- Sports drilled foot pedals
- Embroidered Bentley "wings" to the front and rear headrests
- Jewel fuel and oil filler caps
- Column-mounted paddle switches for tiptronic gear selection
- Bright boot finisher

COMFORT & CONVENIENCE:

CONVENIENCE SPECIFICATION

- Rear view camera (market specific)
- Adaptive cruise control
- Valet key
- Privacy handset with 2 cradles and SIM card reader

COMFORT SPECIFICATION

- Front and rear seat ventilation and massage
- Front seat cushion extension adjustment
- Front passenger seat movement from the rear

OTHER CONVENIENCE OPTIONS

- Climate Boost for rear seat passengers (market specific)
- Adaptive cruise control
- Valet key
- Privacy handset with 2 cradles and SIM card reader
- TV Tuner (market specific)
- Multimedia Specification – rear seat entertainment system including 2 x 10" LCD screens located on the rear of the front seats, 2 x DVD players with integrated SD slot and USB port and HDMI input. Two wireless headphones. Also includes Wi-Fi hot spot (via active SIM) and 64 GB internal storage
- Naim for Bentley Premium Audio System – with enhanced surround sound for the ultimate audio experience
- Rear bottle cooler – located behind the rear centre arm rest provides cooling ability for drinks
- GPS tracking system provision in addition to standard alarm system (market specific)
- GPS tracking system full fitment, in addition to standard alarm system (market specific)
- Remote control garage / electronic gate opener
- 6-disc CD changer fitted in glovebox
- Two ashtrays and three cigar lighters
- Rear view camera
- First aid kit and warning triangle
- Battery charger
- Twin front armrests
- Electronically operated blinds to rear windows

MULLINER OPTIONS

- Personalised tread plates
- 2 hide cushions



**FLYING SPUR
W12**

Engine: 6.0 litre twin-turbocharged W12
 Max power: 616 bhp / 460 kW / 625 PS @ 6,000 rpm
 Max torque: 800 Nm / 590 lb.ft @ 1,700 rpm
 Transmission: 8-speed automatic
 Driveline: Permanent all-wheel drive with 40:60 front to rear split
 Top speed: 200 mph / 322 km/h
 0-60 mph / 0-100 km/h: 4.3 seconds / 4.6 seconds
 Wheelbase: 3,066 mm / 120.7 in
 Overall length: 5,299 mm / 208.6 in
 Width (across body): 1,984 mm / 78.1 in
 Width (including mirrors): 2,207 mm / 86.9 in
 Overall height: 1,488 mm / 58.6 in
 Fuel tank: 90 litres / 20 gallons / 24 US gallons
 Wheel size: 19" Classic alloy wheels in bright painted and diamond turned finish with black wheel centre badges
 Boot volume: 475 litres / 16.7 cu ft
 Kerb weight (EU): 2,475 kg / 5,456 lb
 Gross weight: 2,972 kg / 6,552 lb

Fuel consumption (EU Cycle)
 Urban: 12.6 mpg / 22.4 l/100 km
 Extra urban: 27.8 mpg / 10.2 l/100 km
 Combined: 19.2 mpg / 14.7 l/100 km
 CO₂ emissions: 343 g/km

Fuel consumption (EPA Cycle)
 City driving (US): 12.0 mpg
 Highway driving (US): 20.0 mpg
 Combined (US): 15.0 mpg



**FLYING SPUR
V8**

Engine: 4.0 litre twin-turbocharged V8
 Max power: 500 bhp / 373 kW / 507 PS @ 6,000 rpm
 Max torque: 660 Nm / 487 lb.ft @ 1,700 rpm
 Transmission: 8-speed automatic
 Driveline: Permanent all-wheel drive with 40:60 front to rear split
 Top speed: 183 mph / 295 km/h
 0-60 mph / 0-100 km/h: 4.9 seconds / 5.2 seconds
 Wheelbase: 3,066 mm / 120.7 in
 Overall length: 5,299 mm / 208 in
 Width (across body): 1,984 mm / 78.1 in
 Width (including mirrors): 2,207 mm / 86.9 in
 Overall height: 1,488 mm / 58.6 in
 Fuel tank: 90 litres / 20 gallons / 24 US gallons
 Wheel size: 19" Classic alloy wheels in painted finish with red wheel centre badges
 Boot volume: 475 litres / 16.7 cu ft
 Kerb weight (EU): 2,417 kg / 5,329 lb
 Gross weight: 2,972 kg / 6,552 lb

Fuel consumption (EU Cycle)
 Urban: 18.1 mpg / 15.6 l/100 km
 Extra urban: 34.9 mpg / 8.1 l/100 km
 Combined: 25.9 mpg / 10.9 l/100 km
 CO₂ emissions: 254 g/km

Fuel consumption (EPA Cycle)
 City driving (US): 14.0 mpg
 Highway driving (US): 24.0 mpg
 Combined (US): 17.0 mpg



MULSANNE

Engine: 6.75 litre twin-turbocharged V8
 Max power: 505 bhp / 377 kW / 512 PS @ 4,200 rpm
 Max torque: 1,020 Nm / 752 lb.ft @ 1,750 rpm
 Transmission: 8-speed automatic transmission with electronic shift interface, sport mode and steering wheel mounted paddleshift
 Driveline: Rear wheel drive
 Top speed: 184 mph / 296 km/h
 0-60 mph / 0-100 km/h: 5.1 seconds / 5.3 seconds
 Wheelbase: 3,266 mm / 10 ft 8 in
 Overall length: 5,575 mm / 18 ft 3 in
 Width (across body): 1,926 mm / 6 ft 4 in
 Width (including mirrors): 2,208 mm / 7 ft 3 in
 Overall height: 1,521 mm / 5 ft
 Fuel tank: 96 litres / 21.1 gallons / 25.4 US gallons
 Wheel size: 20" Mulsanne alloy wheels
 Boot volume: 443 litres / 15.8 cu ft
 Kerb weight (EU): 2,685 kg / 5,919 lb
 Gross weight: 3,200 kg / 7,055 lb

Fuel consumption (EU Cycle)
 Urban: 11.2 mpg / 25.3 l/100 km
 Extra urban: 24.0 mpg / 11.8 l/100 km
 Combined: 16.8 mpg / 16.9 l/100 km
 CO₂ emissions: 393 g/km

Fuel consumption (EPA Cycle)
 City driving (US): 11.0 mpg
 Highway driving (US): 18.0 mpg
 Combined (US): 13.0 mpg



CONTINENTAL GT V8

Engine: 4.0 litre twin-turbocharged V8
 Max power: 500 bhp / 373 kW / 507 PS @ 6,000 rpm
 Max torque: 660 Nm / 487 lb.ft. @ 1,700 rpm
 Transmission: 8-speed ZF transmission with Quickshift and steering column-mounted gearshift paddles
 Driveline: Permanent all-wheel drive with 40:60 front to rear torque split
 Top speed: 188 mph / 303 km/h
 0-60 mph / 0-100 km/h: 4.6 seconds / 4.8 seconds
 Wheelbase: 2,746 mm / 9 ft
 Overall length: 4,807 mm / 15 ft 9 in
 Width (across body): 1,947 mm / 6 ft 5 in
 Width (including mirrors): 2,226 mm / 7 ft 4 in
 Overall height: 1,401 mm / 4 ft 7 in
 Fuel tank: 90 litres / 20 gallons / 24 US gallons
 Wheel size: 20" 5-spoke alloy wheels in painted finish with red wheel centre badges
 Boot volume: 358 litres / 12.6 cu ft
 Kerb weight (EU): 2,295 kg / 5,060 lb
 Gross weight: 2,750 kg / 6,063 lb

Fuel consumption (EU Cycle)

Urban: 18.2 mpg / 15.5 l/100 km
 Extra urban: 36.7 mpg / 7.7 l/100 km
 Combined: 26.8 mpg / 10.6 l/100 km
 CO₂ emissions: 246 g/km

Fuel consumption (EPA Cycle)

City driving (US): 15.0 mpg
 Highway driving (US): 25.0 mpg
 Combined (US): 19.0 mpg



CONTINENTAL GT V8 CONVERTIBLE

Engine: 4.0 litre twin-turbocharged V8
 Max power: 500 bhp / 373 kW / 507 PS @ 6,000 rpm
 Max torque: 660 Nm / 487 lb.ft. @ 1,700 rpm
 Transmission: 8-speed ZF transmission with Quickshift and steering column-mounted gearshift paddles
 Driveline: Permanent all-wheel drive with 40:60 front to rear torque split
 Top speed: 187 mph / 301 km/h
 0-60 mph / 0-100 km/h: 4.7 seconds / 5.0 seconds
 Wheelbase: 2,746 mm / 9 ft
 Overall length: 4,807 mm / 15 ft 9 in
 Width (across body): 1,947 mm / 6 ft 5 in
 Width (including mirrors): 2,226 mm / 7 ft 4 in
 Overall height: 1,400 mm / 4 ft 7 in
 Fuel tank: 90 litres / 20 gallons / 24 US gallons
 Wheel size: 20" Open-spoke alloy wheels in painted finish with red wheel centre badges
 Boot volume: 260 litres / 9.1 cu ft
 Kerb weight (EU): 2,470 kg / 5,445 lb
 Gross weight: 2,900 kg / 6,393 lb

Fuel consumption (EU Cycle)

Urban: 17.8 mpg / 15.9 l/100 km
 Extra urban: 35.3 mpg / 8.0 l/100 km
 Combined: 25.9 mpg / 10.9 l/100 km
 CO₂ emissions: 254 g/km

Fuel consumption (EPA Cycle)

City driving (US): 14.0 mpg
 Highway driving (US): 24.0 mpg
 Combined (US): 17.0 mpg



CONTINENTAL GT V8 S

Engine: 4.0 litre twin-turbocharged V8
 Max power: 521 bhp / 388 kW / 528 PS @ 6,000 rpm
 Max torque: 680 Nm / 502 lb.ft. @ 1,700 rpm
 Transmission: 8-speed ZF transmission with Quickshift and steering column-mounted gearshift paddles
 Driveline: Permanent all-wheel drive with 40:60 front to rear torque split
 Top speed: 192 mph / 309 km/h
 0-60 mph / 0-100 km/h: 4.3 seconds / 4.5 seconds
 Wheelbase: 2,746 mm / 9 ft
 Overall length: 4,818 mm / 15 ft 10 in
 Width (across body): 1,947 mm / 6 ft 5 in
 Width (including mirrors): 2,226 mm / 7 ft 4 in
 Overall height: 1,391 mm / 4 ft 7 in
 Fuel tank: 90 litres / 20 gallons / 24 US gallons
 Wheel size: 20" Open-spoke alloy wheels in painted finish with red wheel centre badges
 Boot volume: 358 litres / 12.6 cu ft
 Kerb weight (EU): 2,295 kg / 5,060 lb
 Gross weight: 2,750 kg / 6,063 lb

Fuel consumption (EU Cycle)*

Urban: 18.0 mpg / 15.7 l/100 km
 Extra urban: 36.2 mpg / 7.8 l/100 km
 Combined: 26.4 mpg / 10.7 l/100 km
 CO₂ emissions: 250 g/km

Fuel consumption (EPA Cycle)*

City driving (US): 15.0 mpg
 Highway driving (US): 25.0 mpg
 Combined (US): 19.0 mpg



CONTINENTAL GT V8 S CONVERTIBLE

Engine: 4.0 litre twin-turbocharged V8
 Max power: 521 bhp / 388 kW / 528 PS @ 6,000 rpm
 Max torque: 680 Nm / 502 lb.ft. @ 1,700 rpm
 Transmission: 8-speed ZF transmission with Quickshift and steering column-mounted gearshift paddles
 Driveline: Permanent all-wheel drive with 40:60 front to rear torque split
 Top speed: 191 mph / 308 km/h
 0-60 mph / 0-100 km/h: 4.5 seconds / 4.7 seconds
 Wheelbase: 2,746 mm / 9 ft
 Overall length: 4,818 mm / 15 ft 10 in
 Width (across body): 1,947 mm / 6 ft 5 in
 Width (including mirrors): 2,226 mm / 7 ft 4 in
 Overall height: 1,390 mm / 4 ft 7 in
 Fuel tank: 90 litres / 20 gallons / 24 US gallons
 Wheel size: 20" Open-spoke alloy wheels in painted finish with red wheel centre badges
 Boot volume: 260 litres / 9.1 cu ft
 Kerb weight (EU): 2,470 kg / 5,445 lb
 Gross weight: 2,900 kg / 6,393 lb

Fuel consumption (EU Cycle)*

Urban: 17.5 mpg / 16.1 l/100 km
 Extra urban: 34.9 mpg / 8.1 l/100 km
 Combined: 25.4 mpg / 11.1 l/100 km
 CO₂ emissions: 258 g/km

Fuel consumption (EPA Cycle)*

City driving (US): 14.0 mpg
 Highway driving (US): 24.0 mpg
 Combined (US): 17.0 mpg



CONTINENTAL GT

Engine: 6.0 litre twin-turbocharged W12
 Max power: 567 bhp / 423 kW / 575 PS @ 6,000 rpm
 Max torque: 700 Nm / 516 lb.ft. @ 1,700 rpm
 Transmission: 8-speed ZF transmission with Quickshift and steering column-mounted gearshift paddles
 Driveline: Permanent all-wheel drive with 40:60 front to rear torque split
 Top speed: 197 mph / 318 km/h
 0-60 mph / 0-100 km/h: 4.3 seconds / 4.5 seconds
 Wheelbase: 2,746 mm / 9 ft
 Overall length: 4,807 mm / 15 ft 9 in
 Width (across body): 1,947 mm / 6 ft 5 in
 Width (including mirrors): 2,226 mm / 7 ft 4 in
 Overall height: 1,401 mm / 4 ft 7 in
 Fuel tank: 90 litres / 20 gallons / 24 US gallons
 Wheel size: 9.5J x 20" 5-spoke alloy wheels in painted finish with black wheel centre badges
 Boot volume: 358 litres / 12.6 cu ft
 Kerb weight (EU): 2,320 kg / 5,115 lb
 Gross weight: 2,750 kg / 6,063 lb

Fuel consumption (EU Cycle)

Urban: 12.6 mpg / 22.4 l/100 km
 Extra urban: 28.6 mpg / 9.9 l/100 km
 Combined: 19.5 mpg / 14.5 l/100 km
 CO₂ emissions: 338 g/km

Fuel consumption (EPA Cycle)

City driving (US): 12.0 mpg
 Highway driving (US): 21.0 mpg
 Combined (US): 15.0 mpg



CONTINENTAL GT CONVERTIBLE

Engine: 6.0 litre twin-turbocharged W12
 Max power: 567 bhp / 423 kW / 575 PS @ 6,000 rpm
 Max torque: 700 Nm / 516 lb.ft. @ 1,700 rpm
 Transmission: 8-speed ZF transmission with Quickshift and steering column-mounted gearshift paddles
 Driveline: Permanent all-wheel drive with 40:60 front to rear torque split
 Top speed: 195 mph / 314 km/h
 0-60 mph / 0-100 km/h: 4.4 seconds / 4.7 seconds
 Wheelbase: 2,746 mm / 9 ft
 Overall length: 4,807 mm / 15 ft 9 in
 Width (across body): 1,947 mm / 6 ft 5 in
 Width (including mirrors): 2,226 mm / 7 ft 4 in
 Overall height: 1,400 mm / 4 ft 7 in
 Fuel tank: 90 litres / 20 gallons / 24 US gallons
 Wheel size: 9.5J x 20" 5-spoke alloy wheels in painted finish with black wheel centre badges
 Boot volume: 260 litres / 9.1 cu ft
 Kerb weight (EU): 2,495 kg / 5,501 lb
 Gross weight: 2,900 kg / 6,393 lb

Fuel consumption (EU Cycle)

Urban: 12.4 mpg / 22.8 l/100 km
 Extra urban: 27.4 mpg / 10.3 l/100 km
 Combined: 19.0 mpg / 14.9 l/100 km
 CO₂ emissions: 347 g/km

Fuel consumption (EPA Cycle)

City driving (US): 12.0 mpg
 Highway driving (US): 20.0 mpg
 Combined (US): 15.0 mpg



CONTINENTAL GT SPEED

Engine: 6.0 litre twin-turbocharged W12
 Max power: 626 bhp / 467 kW / 635 PS @ 6,000 rpm
 Max torque: 820 Nm / 605 lb.ft. @ 1,700 rpm
 Transmission: 8-speed ZF transmission with Quickshift and steering column-mounted gearshift paddles
 Driveline: Permanent all-wheel drive with 40:60 front to rear torque split
 Top speed: 206 mph / 331 km/h
 0-60 mph / 0-100 km/h: 4.0 seconds / 4.2 seconds
 Wheelbase: 2,746 mm / 9 ft
 Overall length: 4,818 mm / 15 ft 10 in
 Width (across body): 1,947 mm / 6 ft 5 in
 Width (including mirrors): 2,226 mm / 7 ft 4 in
 Overall height: 1,391 mm / 4 ft 7 in
 Fuel tank: 90 litres / 20 gallons / 24 US gallons
 Wheel size: 21" signature Speed alloy wheels in painted finish with black wheel centre badges
 Boot volume: 358 litres / 12.6 cu ft
 Kerb weight (EU): 2,320 kg / 5,115 lb
 Gross weight: 2,750 kg / 6,063 lb

Fuel consumption (EU Cycle)

Urban: 12.6 mpg / 22.4 l/100 km
 Extra urban: 28.6 mpg / 9.9 l/100 km
 Combined: 19.5 mpg / 14.5 l/100 km
 CO₂ emissions: 338 g/km

Fuel consumption (EPA Cycle)

City driving (US): 12.0 mpg
 Highway driving (US): 21.0 mpg
 Combined (US): 15.0 mpg



CONTINENTAL GT SPEED CONVERTIBLE

Engine: 6.0 litre twin-turbocharged W12
 Max power: 626 bhp / 467 kW / 635 PS @ 6,000 rpm
 Max torque: 820 Nm / 605 lb.ft. @ 1,700 rpm
 Transmission: 8-speed ZF transmission with Quickshift and steering column-mounted gearshift paddles
 Driveline: Permanent all-wheel drive with 40:60 front to rear torque split
 Top speed: 203 mph / 327 km/h
 0-60 mph / 0-100 km/h: 4.1 seconds / 4.4 seconds
 Wheelbase: 2,746 mm / 9 ft
 Overall length: 4,818 mm / 15 ft 10 in
 Width (across body): 1,947 mm / 6 ft 5 in
 Width (including mirrors): 2,226 mm / 7 ft 4 in
 Overall height: 1,390 mm / 4 ft 7 in
 Fuel tank: 90 litres / 20 gallons / 24 US gallons
 Wheel size: 21" signature Speed alloy wheels in painted finish with black wheel centre badges
 Boot volume: 260 litres / 9.1 cu ft
 Kerb weight (EU): 2,495 kg / 5,501 lb
 Gross weight: 2,900 kg / 6,393 lb

Fuel consumption (EU Cycle)

Urban: 12.4 mpg / 22.8 l/100 km
 Extra urban: 27.4 mpg / 10.3 l/100 km
 Combined: 19.0 mpg / 14.9 l/100 km
 CO₂ emissions: 347 g/km

Fuel consumption (EPA Cycle)

City driving (US): 12.0 mpg
 Highway driving (US): 20.0 mpg
 Combined (US): 15.0 mpg



Information Provided by
DEALER

Bentley Motors Limited, Pym's Lane, Crewe, Cheshire, CW1 3PL, England. www.BentleyMotors.com
The models presented in this brochure include optional specifications. Specifications, standard equipment, options, fabrics and colours are subject to change without notice. Your Bentley representative will always have the latest information. The name 'Bentley' and the 'B' wings design are registered trademarks of Bentley Motors Limited. Bentley Motors Limited acknowledges the rights of third parties in other trademarks. The models shown may include European and non-European specifications. © 2014 Bentley Motors Limited. Printed in England.



Information Provided by:

DEALER
E-PROCESS

