

# EQUATOR



Information Provided by  
**DEALER**  
S-PROCESS



Way of Life!



### Tow up to 6,300 lb

From boats to campers to horse trailers, the Equator's hefty towing capacity allows you to pull the heavy stuff.



### Lock It Up

Set the Electronic Locking Rear Differential with the simple push of a button.

### Skid Plates

The Equator RMZ-4 features rugged skid plates to help protect components when off-roading, including the oil pan, transfer case and fuel tank.

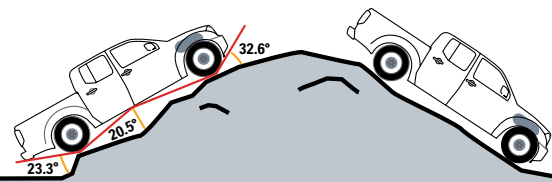


# Engineered for Work, Fun and Everything In-Between

The Suzuki Equator lets you live your life without limits. It offers advanced 4WD capability to confidently carry you and your gear over the toughest terrain without breaking a sweat. The available 261-hp V6 engine serves up the power and torque to make tackling trails a blast, while delivering a towing capacity of up to 6,300 lb. You're not one to take to the road unprepared, and with Equator, you'll be ready for whatever comes your way.

### Hill Hold and Hill Descent Control

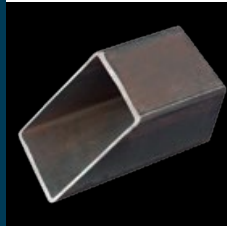
These two features make navigating steep hills less heart-stopping. Hill Hold Control allows you to stop on an incline without rolling back for up to two seconds. Hill Descent Control lets you come back down without riding the brakes.



Crew Cab



Extended Cab



### Fully Boxed Frame

This improves torsional rigidity for outstanding off-road performance, increased cargo and towing capacity and improved ride.

### Cargo Tie-Down System and Spray-on Bed Liner

All of your gear rides safely and securely, thanks to this available, fully customizable tie-down system that features adjustable cleats for maximum tie-down versatility. And Equator's available spray-on bed liner helps keep the bed looking great.



### Fold-Flat Front Seat

The fold-flat front seat adds even more versatility: Work on a laptop, eat lunch, or open up more space for unwieldy cargo.

## The Heart of a Truck

While the Equator may be tough on the outside, its interior demonstrates that this truck has a sophisticated side too. With wide, supportive seats, quality materials and plenty of elbow room, it's the ideal place to relax at the end of a hard day's work—or play. The rear seat splits, folds up, folds down or even folds flat to provide plenty of passenger and payload options. And simple details like a dual glove compartment, large center console and underseat storage make the rugged Equator a veritable model of civility.



### Dual-Stage Airbags

In a collision, the advanced front airbag system senses impact severity and adjusts airbag deployment accordingly, helping reduce injury in the event of an accident.<sup>1</sup>

**“I was struck by its tight, well-built feel... and excellent power.”** —Road & Track

# Equator Features

## EXTENDED CAB PREMIUM

### MECHANICAL

- 2.5-liter DOHC 16-valve 4-cylinder, 152-hp and 171 lb-ft of torque
- 5-speed automatic transmission (AT)
- Fully boxed ladder-frame construction
- Independent front suspension
- Overslung multi-leaf rear suspension
- 16-inch aluminum alloy wheels with P265/70R16 tires

### EXTERIOR

- Rear-bumper-mounted Class III tow-hitch-ball provision
- 6-foot (73.3-inch) cargo bed
- Detachable tailgate with lock
  - Privacy glass
- 90-degree rear-door-opening access

### INTERIOR

- Air conditioning
- Cruise control
- AM/FM/CD audio system
- Rear underseat storage
- Front door pockets with bottle holders
- Dual 12-volt accessory power outlets
- Dual glove compartment
- Remote keyless entry
- Power windows
- Power door locks
- Dual power outside mirrors
- Tilt steering column
- Manual sliding and locking rear window

### SAFETY

- Vehicle Dynamic Control (VDC)<sup>2</sup>
- Six airbags Supplemental Restraint System (SRS)<sup>1</sup> including:
  - Dual front advanced airbags
  - Side curtain airbags, front and rear
  - Front side-impact airbags
- 4-wheel Anti-lock Braking System (ABS)
- Electronic Brake-force Distribution (EBD)
- Active Limited Slip Traction Control
- Tire Pressure Monitoring System (TPMS)<sup>3</sup>
- Side-impact door beams, front and rear

## CREW CAB SPORT

Includes Extended Cab plus

### MECHANICAL

- 4.0-liter DOHC 24-valve V6, 261-hp and 281 lb-ft of torque
- 17-inch aluminum alloy wheels with P265/65R17 tires
- Larger front-brake rotors

### EXTERIOR

- Four full-size doors with 5-passenger seating
- Spray-on bed liner
- Cargo-bed track-type tie-down system with 4 tie-down cleats
- Dual power outside mirrors
- Full-size spare tire
- Chrome rear bumper
- Rear-bumper-mounted Class III tow-hitch-ball provision
- 5-foot (59.5-inch) cargo bed

### INTERIOR

- Upgraded AM/FM/CD audio with 6 speakers, including dual front-door tweeters
- 60/40 rear-seat flip-up/fold-up seatback
- Rear heater ducts
- Rear window defroster (replaces sliding rear window)
- Front map lights

### SAFETY

- Vehicle immobilizer

### SPORT 4WD LONG BED

- 6-foot (73.3-inch) cargo bed
- 4WD with 2-speed transfer case and low-range gearing
- Hill Hold Control (HHC)
- Hill Descent Control (HDC)

## CREW CAB RMZ-4

Includes all Crew Cab Sport plus

### MECHANICAL

- 4WD with 2-speed transfer case and low-range gearing
- Hill Hold Control (HHC)
- Hill Descent Control (HDC)
- Bilstein high-performance shocks
- 16-inch off-road alloy wheels with P265/75R16 BF Goodrich® Rugged Trail tires
- Skid plates—protection for oil pan, transfer case and fuel tank
- Dana® 44 rear axle
- Electronic locking rear differential

### EXTERIOR

- Fog lamps
- Chrome outside mirrors and door handles

### INTERIOR

- RMZ-4 unique seating materials
- Driver's seat with adjustable height and lumbar support
- Leather-wrapped steering wheel

### SAFETY

- Vehicle Security System Alarm

FOR MORE INFO, VISIT SUZUKIAUTO.COM



## AVAILABLE COLORS



Glacier White



Silver Alloy



Gunpowder Black



Bay Blue



Adobe Red



# Specifications

EXTERIOR	EXTENDED CAB Premium	CREW CAB SPORT Regular Bed 4x2	CREW CAB SPORT Long Bed 4x4	RMZ-4 Regular Bed 4x4
Overall L x W x H (in)	206.6 x 72.8 x 68.7	206.6 x 72.8 x 70.1	220.1 x 72.8 x 70.1	206.6 x 72.8 x 70.1
Wheelbase (in)	125.9	125.9	139.9	125.9
Bed L x W x D (in)	73.3 x 61.4 x 18.0	59.5 x 61.4 x 18.0	73.3 x 61.4 x 18.0	59.5 x 61.4 x 18.0
Min. Ground Clearance	7.6	8.6	8.9	8.9
INTERIOR				
Head Room, front/rear (in)	39.7/38.3	40.0/38.7	40.0/38.7	40.0/38.7
Leg Room, front/rear (in)	42.4/25.4	42.4/33.6	42.4/33.6	42.4/33.6
Shoulder Room, front/rear (in)	58.3/54.9	58.3/58.3	58.3/58.3	58.3/58.3
Hip Room, front/rear (in)	55.8/55.0	55.6/58.0	55.6/58.0	55.6/58.0
Interior Volume (cu ft)	87.7	101.1	101.1	101.1
EPA ESTIMATED FUEL ECONOMY*				
I-4 AT, city/highway	17/22	--	--	--
V6 AT, city/highway	--	15/20	15/19	15/19
CAPACITIES				
Max Towing (lb)	3,500	6,300	6,100	6,100
Fuel Tank (gallons)	21.1	21.1	21.1	21.1

\*An airbag supplements the crash protection offered by seat belts. The driver and all occupants must be properly restrained by wearing seat belts at all times to minimize the risk of severe injury or death in the event of a crash. <sup>2</sup>VDC electronic stability control cannot be relied upon to prevent accidents due to abrupt steering, carelessness or dangerous driving techniques. <sup>3</sup>The Tire Pressure Monitoring System (TPMS) is not a substitute for regular tire pressure inspections. Tire pressure should be checked at least monthly using a tire pressure gauge. Maintaining the recommended tire pressure can help avoid performance problems, tire damage and premature wear. See the Owner's Manual for additional details. <sup>4</sup>Gas mileage based on EPA mileage estimates, sourced from fueleconomy.gov. Actual mileage may vary based on options, driving conditions, driving habits and vehicle's condition. For more information on America's #1 Warranty, please visit Suzuki.com or see your local authorized dealer and the new warranty booklet for full details. Road & Track and BF Goodrich are registered trademarks. Professional driver under controlled environment. Be extra careful on difficult terrain. Some models shown with optional equipment and accessories. Along with concerned conservationists everywhere, Suzuki urges you to Tread Lightly!® on public or private land. Specifications, comparisons and equipment are based on information available at time of printing and subject to change without notice. For more information, contact your local Suzuki Dealer or visit Suzuki.com. ©American Suzuki Motor Corporation 2012. Suzuki, the 'S' logo and Suzuki model names are Suzuki trademarks or ®.