

The New Continental GT and GTC V8.



Contents.

V8 INTRODUCTION:	07
GT V8:	08
GTC V8:	17
EXTERIOR FEATURES:	24
V8 DRIVETRAIN:	26
ALL-WHEEL DRIVE:	39
BRAKES:	41
INTERIOR FEATURES:	42
IN-CAR TECHNOLOGY:	49
V8 RECOMMENDED COLOURS:	58
BESPOKE COLOURS:	68
WHEEL OPTIONS:	70
WOOD VENEERS AND TRIM OPTIONS:	74
LEATHER:	78
CARPET AND SEAT BELT COLOURS:	82
SPECIFICATION PACKS AND OPTIONS:	84
DESIGN TEAM RECOMMENDATIONS:	96
GT V8 AND GTC V8 ACCESSORIES:	110
THE GT V8 AND GTC V8 COLLECTION:	112
GT V8 STANDARD AND OPTIONAL SPECIFICATION:	114
GTC V8 STANDARD AND OPTIONAL SPECIFICATION:	116





Information Provided by
DEALER
SPECIALISTS



Information Provided by



DEALER

A new Bentley engine earns its wings.

The clues are there. The dark mesh radiator grille, ringed by bright metal. The aggressive lower bumper with its three air intakes. The blacked-out rear valance, with its twin exhaust tailpipes shaped into an elongated, side-on figure eight. And one further small, but significant detail: a red enamel Bentley winged 'B'. These are the tell-tale signs of an all-new Bentley, powered by a 4.0 litre V8 engine.

From the distinctive backbeat of its eight cylinders at idling speed to the glorious snarl of full-throttle acceleration, the new V8 offers an exhilarating, involving and passionate route to

Bentley Continental ownership. It is an engine that can both stir the soul or calm the spirit, according to the mood of the driver or the conditions. Yet it also delivers a power-to-emissions ratio unparalleled in its class.

For years the name Bentley has been unrivalled among high performance grand tourers. Today, two new V8 models extend that reputation, offering sensational performance, outstanding efficiency and a soundtrack to thrill any driver. The Continental GT V8 and Continental GTC V8 have arrived.



A GT that drives to a different beat.

There's a lean and muscular look to the Continental GT V8 that's entirely in keeping with the powertrain beneath the bonnet. The Crewe styling team has created a Bentley coupé of elegantly tailored lines and muscular form, with the precise crease of the front wings shaped by advanced aluminium superforming technology. Those distinctive large, close-set inner headlamps are ringed by jewel-like LED lights; at the rear, Bentley's signature 'floating' LED lights draw one's eye to the extremities of the car, emphasising its low, wide stance. It's a shape that echoes some of the great Bentley grand tourers of the past, yet the design is clean, contemporary and fresh.

The V8's character is emphasised by the gloss black mesh grille, ringed in bright chrome, the aggressive jut of the three-segment front bumper and by the blacked-out rear valance with those tell-tale 'figure eight' exhaust tailpipes. There's a darker side to this Bentley, and it can be summoned up by pressing the

start button and bringing the advanced new 4.0 litre V8 engine to life. Acceleration from 0-60 mph in just 4.6 seconds attests to the power of the advanced 500bhp V8 engine; the power to emissions ratio confirms that it sets a new benchmark for the breed.

Before the drive begins, you'll want to take a little time to enjoy the ambience of the cockpit. Take in the simple, modern feel imparted to the impeccable craftsmanship of the fascia and wood trim by the design team's recommended Dark Fiddleback Eucalyptus, an ambience emphasised by the use of Eliade cloth headlining. The cockpit itself harmoniously integrates advanced infotainment, clear instrumentation, clean, crisp lines and carefully-resolved meeting points of highly polished veneer, soft-touch leather and solid metal. It's an inspiring place to spend some quality time; and with a potential range of over 530 miles between fill-ups thanks to that ultra-efficient V8 engine, you'll be able to do exactly that.



Information Provided by:



DEALER
E-PROCESS



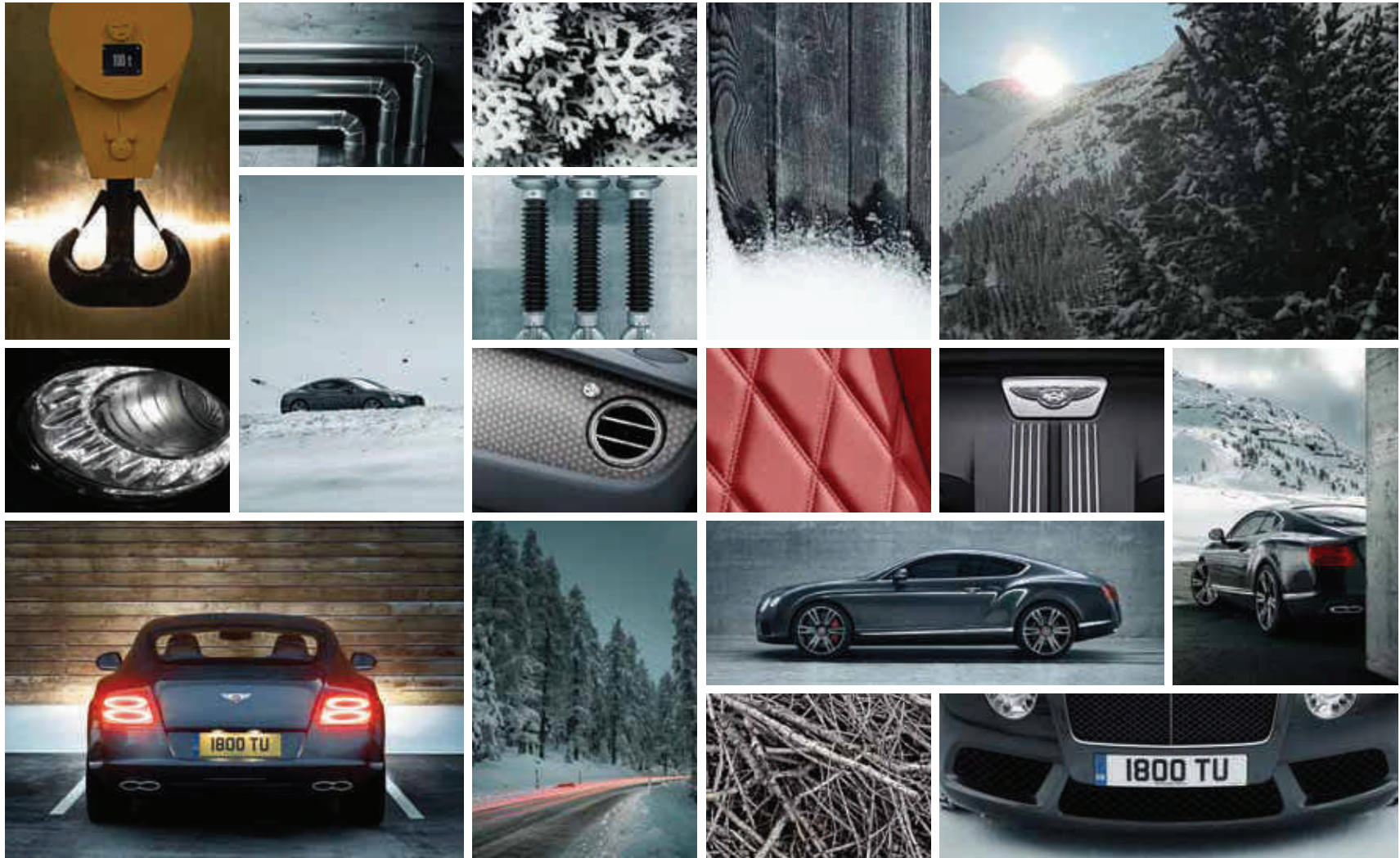
Information Provided by:







Information Provided by:
DEALER



WHY STOP WHEN YOU'RE HAVING FUN?







100 YEARS OF BENTLEY

Convertible. And covetable.

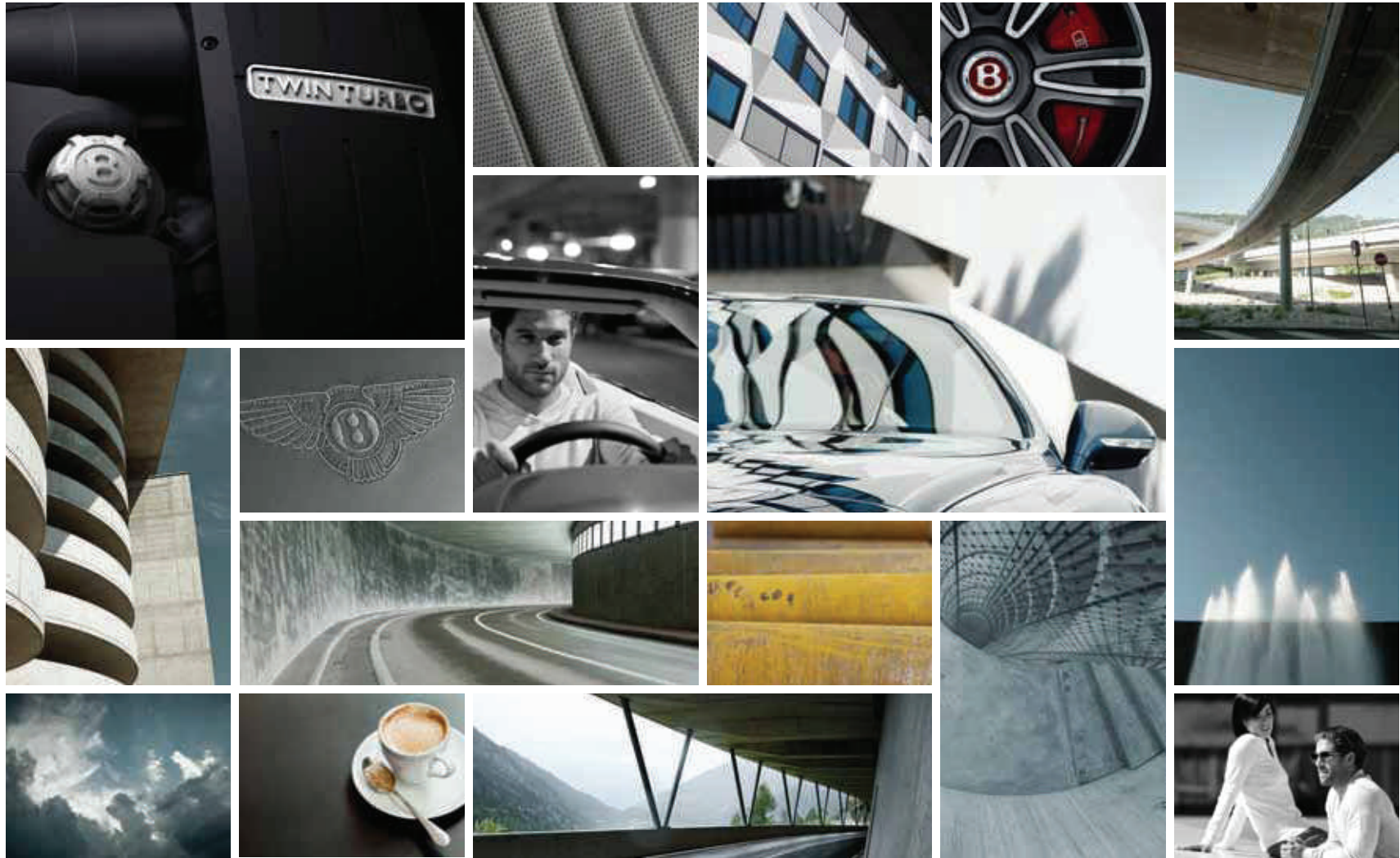


Although closely related to the GT, the Continental GTC V8 has its own distinct character. Those iconic Bentley features of dominant bonnet line, dark matrix mesh grille and twin large inner headlamps confirm its pedigree, while the wide track and four-square stance emphasise the performance focus of an all-wheel drive supercar. At the rear, wrap-around lamps accentuate the low, wide proportions, flanking a distinctive Bentley 'double-horseshoe' boot lid with a spoiler on its upper edge. Distinguishing features for the V8 model include a red enamel winged 'B' badge, gloss black grille with bright chrome surround, three-segment front bumper and the 'figure eight' tailpipes at the rear.

To call the Continental GTC V8 a convertible understates its capabilities. It is both a sensational open tourer when the weather permits and a practical year-round proposition, as well-insulated and refined as a coupé, thanks to its four-layer insulated roof. Inside, the 'cobra head' front seats can be specified with an

optional neck warmer feature, tempting you to enjoy open-top motoring on your way to the ski run. Choose the optional front seat ventilation system, and excess heat is drawn out of the seat backrest and cushion by silent-running fans, allowing you to experience summer sunshine while remaining cool. Unique to the Continental V8 models is the Dark Fiddleback Eucalyptus veneer trim, giving the interior a fresh, contemporary look.

Bentley's new 4.0 litre V8 engine has an inspiring repertoire of sounds, from the deep V8 burble at low engine speeds to the growl and rasp that swell in crescendo as the throttle is pressed further towards the floor. This exceptional new 500bhp Bentley engine can hurtle the GTC V8 from standstill to 60mph in just 4.7 seconds with a compelling surge of power. And for the owner of a Continental GTC V8, one of the incidental pleasures of hood-down motoring is the chance to enjoy the V8's mechanical symphony...in full surround sound.





WHEN THE HOOD IS DOWN,
YOU'RE NOT AN OBSERVER.
YOU'RE A PARTICIPANT.





Information provided by





Information provided by:





Information Provided



SALES
E-PROCESS



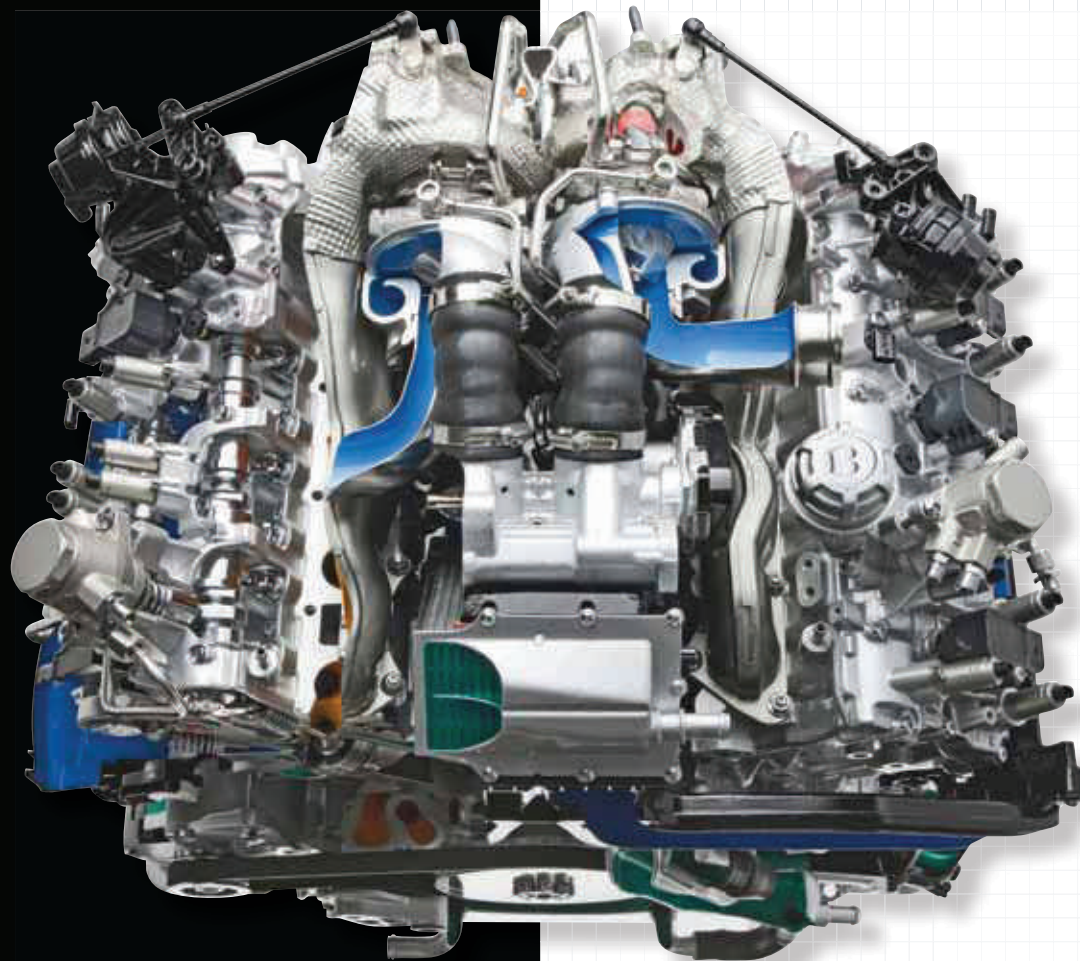
Shaped by the wind.

Those knife-edge crease lines down the front wings of the Continental GT and GTC cannot be made using a conventional panel press. Instead, using a technique called superforming, 5083 grade aluminium is heated to 500°C and shaped around a die using air pressure. No other process could have achieved such crisp, sharp lines. No other process could have enabled Bentley to create such a complex panel without seams or joins. And so, because this is Bentley, no other process would suffice.

That, in microcosm, is the story of the Bentley Continental. The drama of the large, LED-ringed inner headlight, the lean and muscular form of the rear haunch, the way the elliptical rear lights echo the shape of the exhaust beneath, all these are the product of uncompromised dedication to the ideal. From sketch to tape outline, tape outline to Alias software, Alias software to full-sized clay model, the refining, finessing and simplifying took tens of thousands of man hours. The result looks like it has been shaped by the wind itself. And that's appropriate, for a car that can outpace a hurricane.







With power comes responsibility

Bentley's new V8 engine is astonishing, not just for what it does but also for the way it does it. The power and torque figures of 500bhp and 660Nm from 4.0 litres alone would indicate that this new V8 is an advanced high performance engine. But take into consideration that the GT coupé's CO₂ emissions are a mere 246 g/km and it's clear that the newest Bentley engine's technology is world-leading. Even though the Bentley develops a full 500bhp, its power to emissions ratio sets a new benchmark that will take most rivals years to equal.

Engine technology

Four years is a short span of time in which to develop a revolutionary new engine, yet Bentley's commitment in 2008 to develop a GT capable of a 40% increase in fuel-efficiency has now been achieved with the new V8. It can be admitted, however, that Bentley already had expertise in one technology: variable displacement, where four of the eight cylinders are effectively switched off at gentle throttle openings. That technology now makes its appearance in the new direct injection V8. When the engine's control microprocessor detects a light throttle opening, perhaps as the driver maintains a steady cruising speed or decelerates, it closes the valves in four of the eight

cylinders so that they only act as gas springs. This has two immediate benefits; the remaining four cylinders operate at a higher level of efficiency, and the engine's frictional and gas transfer losses are reduced. As soon as the driver presses the throttle harder the engine instantly switches back to full eight-cylinder operation.

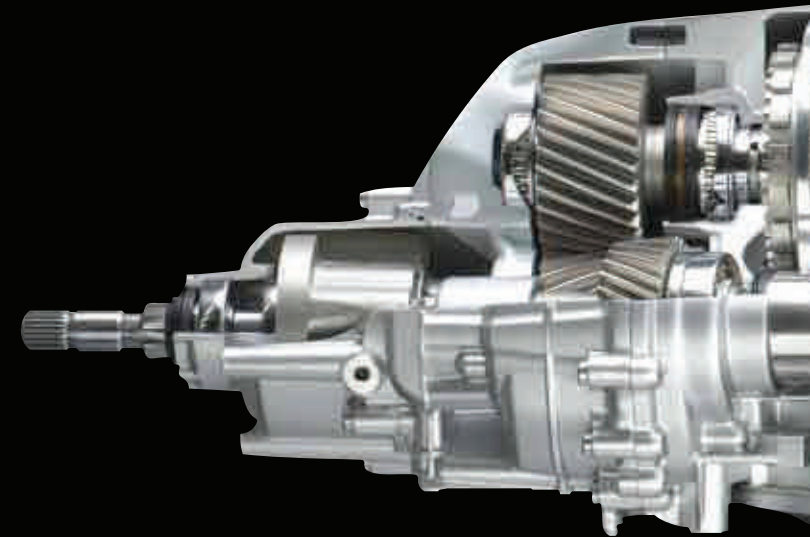
Such is the refinement, speed and smoothness of the technology that the engine's effective displacement seamlessly switches from V8 to V4 and back again with imperceptible ease. Switchable hydraulic engine mounts change to a 'soft' state during idle for improved isolation from vibration.

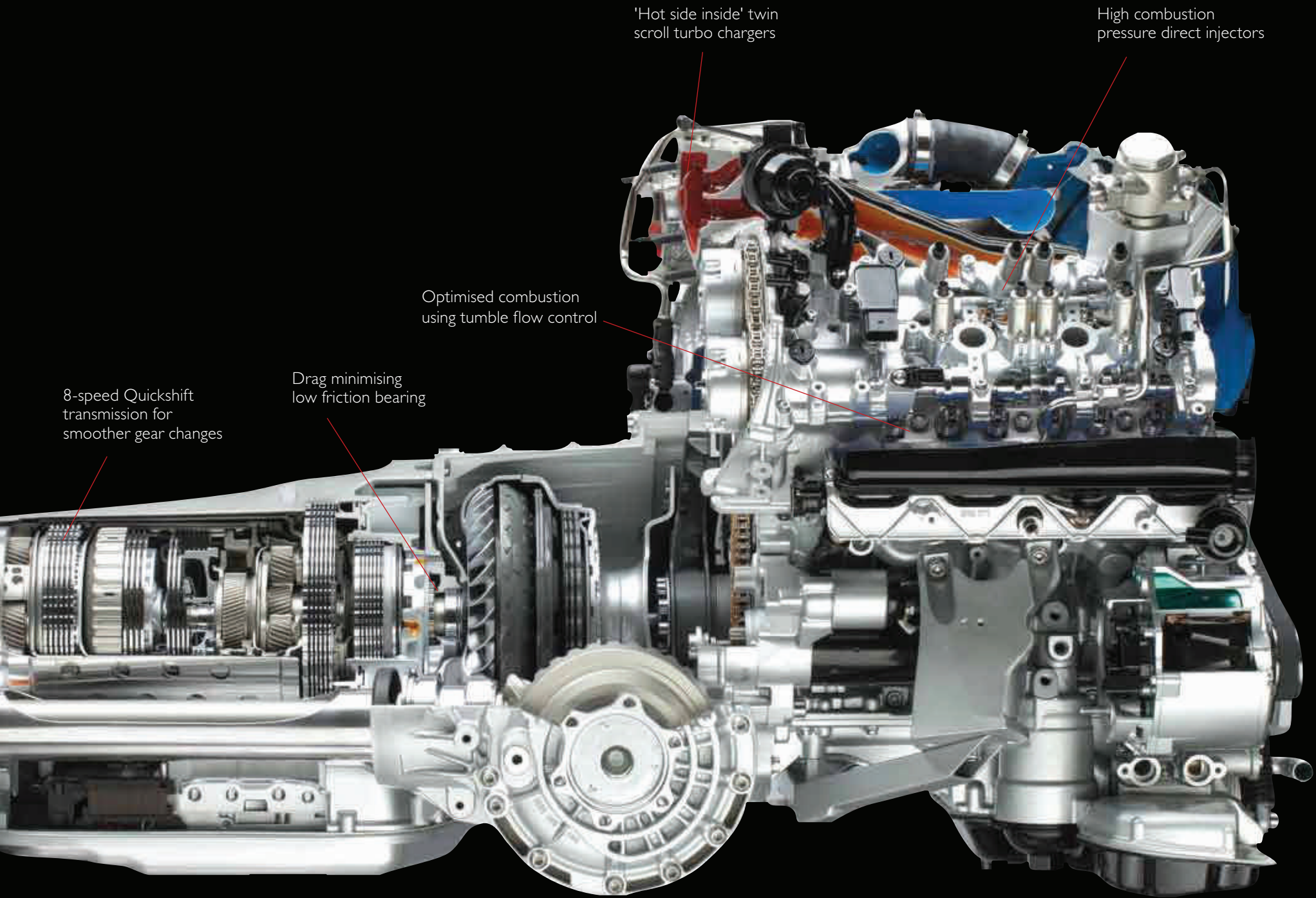
Seamlessly managing the transition between modes

throughout the V8's operating range is a highly advanced engine management system.

A 32-bit TriCore™ microprocessor performs up to 180 million instructions per second, the kind of computing power that a few years ago was enough to run a space mission. Perhaps the new Bentley V8's engineering really is rocket science: at all events, the microprocessor provides an unparalleled level of precision in its control of the combustion process. It also controls the thermal management system that ensures a faster warm-up for the engine and transmission, as well as the switchable oil control system, each of which has a contribution to make to the new engine's overall 40% efficiency gain.

Another key component of the new V8 powertrain is the new 8-speed transmission. Not only does it deliver faster, smoother gear changes, it also accounts for 6% of the total 40% efficiency gain achieved by the new V8. Having a greater number of ratios ensures that the engine is always working at its most efficient gearing, while drag torque losses have been minimised within the transmission.





'Hot side inside' twin scroll turbochargers

High combustion pressure direct injectors

Optimised combustion using tumble flow control

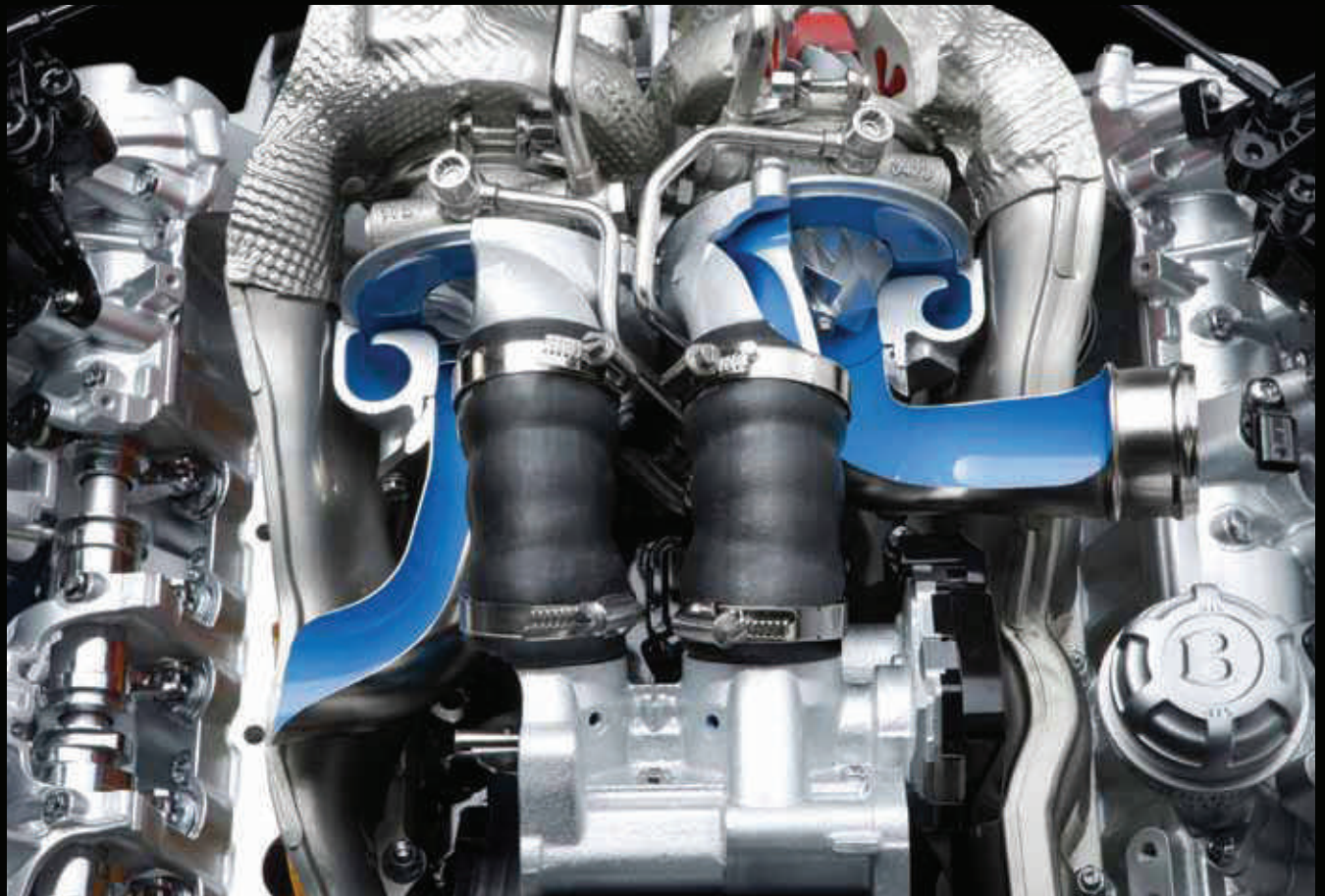
8-speed Quickshift transmission for smoother gear changes

Drag minimising low friction bearing

Hot side inside

In their quest for efficiency, Bentley's engineering team considered every component and how it could be designed to minimise energy losses without compromising power or durability. They call this process 'engine optimisation' and it encompasses everything from oil viscosity and indirect intercooling to the use of low friction bearings. Unusually, the turbochargers are mounted within the 'V' of the V8, contributing to efficiency and weight reduction, a process that Bentley's engineering team term 'hot side inside' (HSI).

Bentley's engineers have even designed the electrical system to work in a more efficient way, reducing the amount of power sapped by the alternator. Using the principle of recuperation, the alternator's output is 'topped up' by the battery at low engine speeds, then the process is reversed via energy recovery during those times when the car is decelerating. Over a typical drive cycle this can reduce fuel consumption by 4%, while the 'on demand' variable power assistance for the steering has another 3% efficiency gain to contribute.





*Fly at high altitude.
Without leaving the ground.*

The genius of the new V8 is that it not only sets a new standard for fuel efficiency within its class, it does so without the driver being aware of any of its ground-breaking technology at work. Accelerate hard and the Continental V8 will streak towards the horizon, hitting 60mph from rest in just 4.6 seconds, the 8-speed transmission seamlessly shifting gears with only the flick of the tachometer to tell you when the next ratio has been engaged. Sweep along a challenging road, accelerating, steering and braking in a satisfying sequence of curves and straights, and you won't be able to detect a single transition between four and

eight cylinders or the action of electrical recuperation. Cruise at a gentle steady state and the intelligent engine and transmission mount will maintain impeccable refinement.

There will be one point in your journey when you realise how efficient the new 4.0 Bentley V8 is, however. It's the moment when you glance down at the fuel gauge after a few hours of exhilarating driving...and realise that the tank is still half full. A thoroughbred new Bentley V8 should be enjoyed on a long, rewarding drive; with over 530 miles between fill-ups, your journey need have few interruptions.

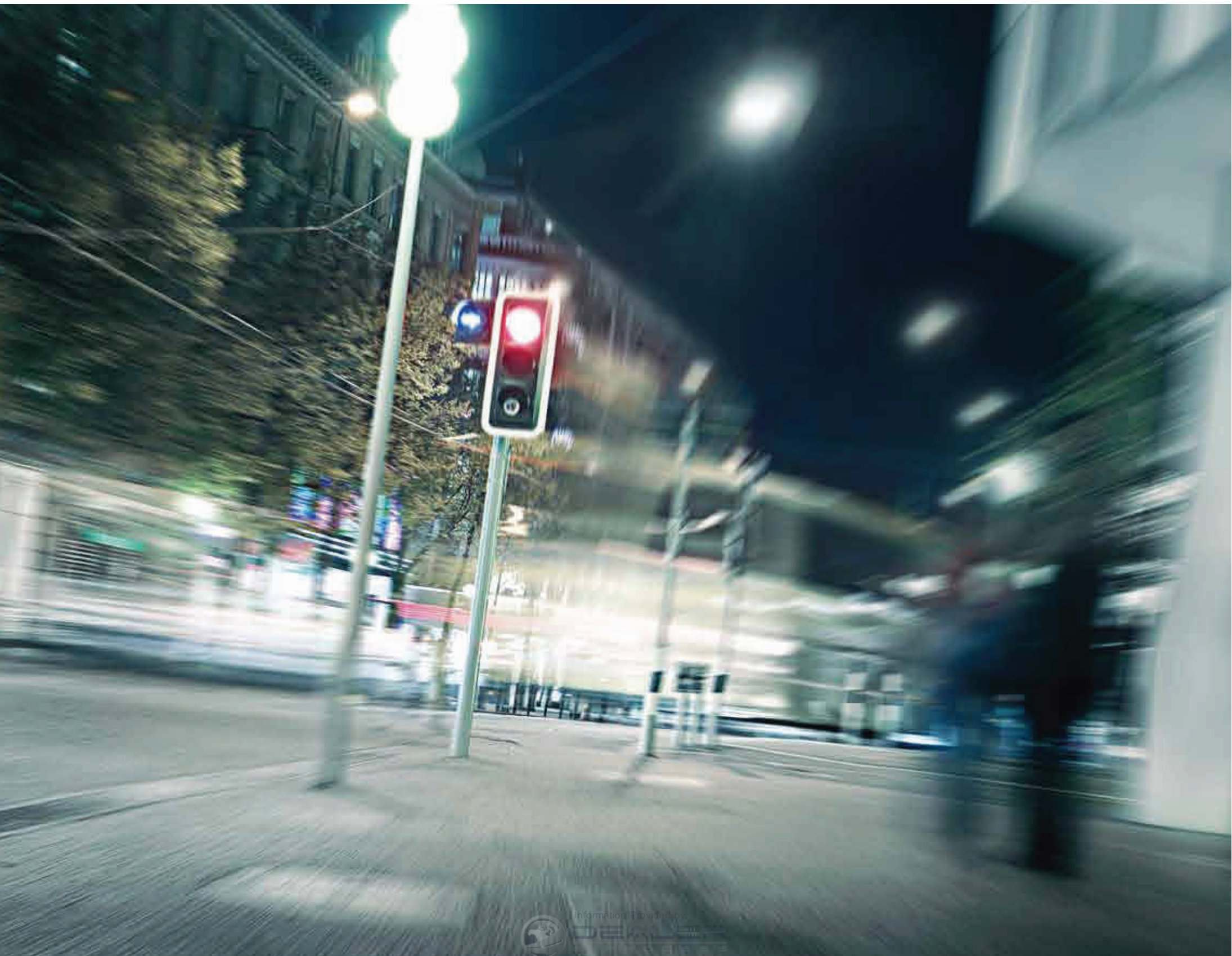







Information Provided by







Information Provided by:
 **DEALER**

A Bentley V8's audio entertainment system.

Bentley has always paid close attention to the voice of its engines. A powertrain that's intrusively noisy at cruising speeds is an unwelcome racket. An engine that's muted when you're unleashing full performance is uninvolved. But there's a precise point between the two extremes – a refined, harmonious growl that builds to a thrilling crescendo – that is the hallmark of a Bentley engine.

Our founder W.O. Bentley was famously intolerant of noise, remarking, "I have put up with a lot of noise in my time, but I don't like it, and I hate noise for the sake of noise. To me 70mph in silence is far more creditable than a noisy 80mph." Today's Continental GT V8 is quieter at 140mph than any of W.O.'s creations at 70mph...but the principle remains. That's why the V8 engineering team developed an exhaust system that delivers a rich, powerful V8 sound under acceleration while offering typical Bentley refinement at cruising speed, even taking into account the variable displacement technology that switches between V8 and V4 operation.

It's a fascinating subject, half science, half art, and Bentley's team spent a lot of time in sound simulators before turning their attention to the new V8's exhaust system. Their aim was to create a deep, effortlessly powerful growl at low engine speeds that builds in intensity to a motorsport-inspired rasp at full throttle. To achieve this, both banks of cylinders feed towards a 9-litre capacity centre silencer beneath the floorpan – but the left hand exhaust first passes through a 2-litre asymmetric silencer that gives the engine its distinctive V8 burble. A balance tube just ahead of the central silencer tunes and modulates the V8 beat, while at the rear, two dual mode rear silencers – one each side – give voice to the sporty character of the V8 under acceleration, while reducing noise intrusion at cruising speeds.

It seems a pity that all this advanced sound engineering is hidden from the owner's view underneath the Continental GT or GTC. But if you cannot see the artistry of the exhaust system engineers, you will always be able to hear it. Outstanding as the Bentley's in-car audio system is, there will be times when the engine note is all the music you'll want to hear.



Eight into four will go.



Without resistance, there is no torque. And without torque, there is no acceleration. Bentley's new V8 develops a massive 660 Newton metres of torque at the comparatively low engine speed of 1700rpm. It's enough to catapult a Continental GT V8 from a standing start to 60 miles an hour in just 4.6 seconds, and on to a top speed of 188 miles an hour (303 km/h) in the right conditions.

But it wouldn't do so if the tyres were spinning and smoking uselessly, which is why every Bentley Continental features permanent all-wheel drive. Whether you're four-time world rally champion Juha Kankkunen targeting a new world ice speed

record, or simply want to accelerate smartly away from the lights on a cold, wet winter's day, the reassuring grip and traction of all-wheel drive is the other essential ingredient in a Bentley's high performance capability. In the Continental GT and GTC, the power is split 40:60 front to rear, minimising understeer during hard cornering and allowing the experienced driver to control the car's line and balance via the throttle. The new V8's prodigious power and torque give it the potential for astonishing performance. But it's all-wheel drive that turns potential into thrilling reality.



BENTLEY

A brake.
But not on your
enjoyment.

Acceleration times are often taken as the key measure of performance – and the Continental GT V8's 0-60mph time of 4.6 seconds puts it deep into supercar territory. But as any skilled driver knows, a car's braking system is just as important an arbiter when judging high performance; the ability to brake swiftly and controllably from high speed is just as important as the power to get to that speed. In that respect, the Continental GT and GTC are very well equipped. The vented discs of the V8 models are a massive 405mm at the front and 335mm at the rear. Should you often find yourself descending alpine passes at high speed, Bentley also offers the option of carbon ceramic vented discs, which offer virtually fade-free braking from ultra high speeds time after time, with the additional benefit of an extended, corrosion-free life. Whatever your choice, there are two pedals in a Bentley's cockpit – and both deliver stupendous performance at the flex of a foot.



Inner satisfaction.

The sight of your Bentley, parked and ready to go, is always guaranteed to prompt a smile of pleasure as you approach it, a pleasure that intensifies when you settle into the driving seat and look around you. There's much to admire in the design of a Bentley's interior, but it's also the command centre for an immensely fast sporting grand tourer. So while enjoying the hand-crafted ambience of the interior, you'll also interact with it: programming the sat nav, selecting a music source on the superlative audio system or perhaps even selecting manual mode on the advanced new 8-speed transmission to take advantage of an inviting stretch of road. Every surface you touch, every control you use, is carefully developed to bond driver with machine, uniting form and function to make rapid progress as effortless and intuitive as walking.

That's why designing the interior of a Bentley is part science, part art. It starts with the visual impressions that form as you settle into the driving seat. The Bentley's surfaces of leather, wood and metal are all crisply defined, subliminally echoing the lean muscularity of the exterior. Yet each touch of leather reveals a sensation of softness, giving a warm and welcoming sensation to the fingertips.









For the Continental GT V8 and GTC V8, the traditional crafts of wood, leather and knurled metal are given full expression, but in a clean, crisp and modern design language. The symmetrical fascia was inspired by the Bentley winged 'B', and features a 'flying buttress' centre stack and open illuminated stowage. The impeccably framed door and rear quarter trims offer excellent stowage, a result of many hours spent on the road by the design team to develop a living space worthy of a grand tourer. Even the elegant form of the 'cobra-head' seats with their integrated headrests are not simply outstandingly comfortable but also create more legroom for rear passengers.

The sporting, youthful spirit of the new V8 models has given Bentley's interior design team the opportunity to create a subtly different ambience. The shorter centre console creates extra space in the rear and emphasises the sports car feel of the cockpit. The Eliade cloth headlining in the GT adds to

the youthful mood, while the specially-chosen veneer – Dark Fiddleback Eucalyptus - has a clean, straight grained appearance that also gives a spectacular 3D effect. Complementing the sporty, focused design theme, the V8 models are offered with a monotone hide interior in a choice of Beluga, Newmarket Tan, Porpoise or Imperial Blue.

Wider choices are available, of course, with options such as the Colour Specification, Touring Specification, Mulliner Driving Specification or Convenience Specification. Yet there's something about the single-mindedness of the Fiddleback Eucalyptus and monotone hide colour that's entirely at one with the efficiency of the new V8. It's lean, it's ready for action and it's there to be enjoyed. Such unity of purpose can only come from a place like Crewe, where the engineers think like artists and the artists think like engineers.





Information Provided by:



DEALER

Not all the advanced technology
is under the bonnet.



The new Continental V8 engine is compact, powerful and technologically advanced. Much the same could be said of the infotainment system created for the Continental GT and GTC. Each rises to the challenge of providing outstanding performance within tightly defined parameters, whether of space or capacity.

To take an example, the Bentley's audio system delivers the kind of power and clarity you might expect of a high quality audio system at home. To achieve this within the constraints of a two-door cabin, Bentley specified Balanced Mode Radiator (BMR) speakers, which combine the functions of separate tweeter and midrange speakers in one unit. Sited in the fascia and rear quarter panel, they make it possible to direct the sound with accuracy, together with stunning clarity right across the audible spectrum. As standard the Continental GT comes with an eight channel, eight speaker system, which offers 15 Gigabytes of storage, and can also play music via an iPod, MP3 player, the car's own six-disc CD changer or even an SD card. So too does the Continental GTC, with the thoughtful addition of automatic adjustment to bass and subwoofer to compensate for the shift in audio quality when the roof is down.

Choose the Naim® for Bentley audiophile system and the

number of channels rises to 15, with 11 custom-built speakers in the Continental GT and 10 in the GTC. The result is a quality of music reproduction that is uncannily like being at the live performance; every caress of finger upon guitar string, every nuance of a singer's voice brought to life with clarity and passion.

What of the 'info' in 'infotainment'? Here, too, the Bentley system sets high standards for ease of use. The touch-screen navigation system includes live traffic data*, online access for point of interest searches*, a 30GB hard disc drive offering rapid access to a continent-full of mapping and even the option of satellite landscape imagery*. As you drive, it provides real time monitoring of your tyre pressures, access to your phone contacts (either via Bluetooth or by inserting your SIM card) and the opportunity to zoom in or out of mapping at the touch of a finger. And to prove that even a touch screen offers the scope for thoughtful design, the graphic sliders feature Bentley knurling, to harmonise with the polished metal switchgear on fascia and steering wheel. Even in the virtual world, a Bentley is unmistakable.

* Not available in all markets

Be part of the great outdoors.



The interior of the Continental GTC V8 shares many features with that of its coupé stablemate, but it has one further advantage to offer. At the touch of a button the four-layer insulated hood stows itself neatly in a swift choreography of smooth electric motors, flooding the cockpit and its occupants in natural light and opening a full panorama of the world around.

Under such conditions the grain of the Dark Fiddleback Eucalyptus seems to assume almost a three-dimensional quality, whilst the immaculate polished finish of the bezels and knurled switchgear gleams in the light.

If, like the Bentley interior design team, you feel that top-down driving should be experienced as often as possible, the neck warmer feature of the Continental GTC seats is a must-have option, especially as it also includes both massage and seat ventilation. With the neck warmer's choice of three different fan speeds, you can travel hood-down in cooler weather, enjoying the fresh air without being chilled by it. City streets at night take on a new dimension, neon lights glinting and sparkling on the polished chrome switchgear: with the hood down you are part of the scene, not just an observer. So you can discover the great outdoors all year round, without having to dress like an explorer.









Information Provided by:

DEALER
E-PROCESS





© 2013



Information Provided by

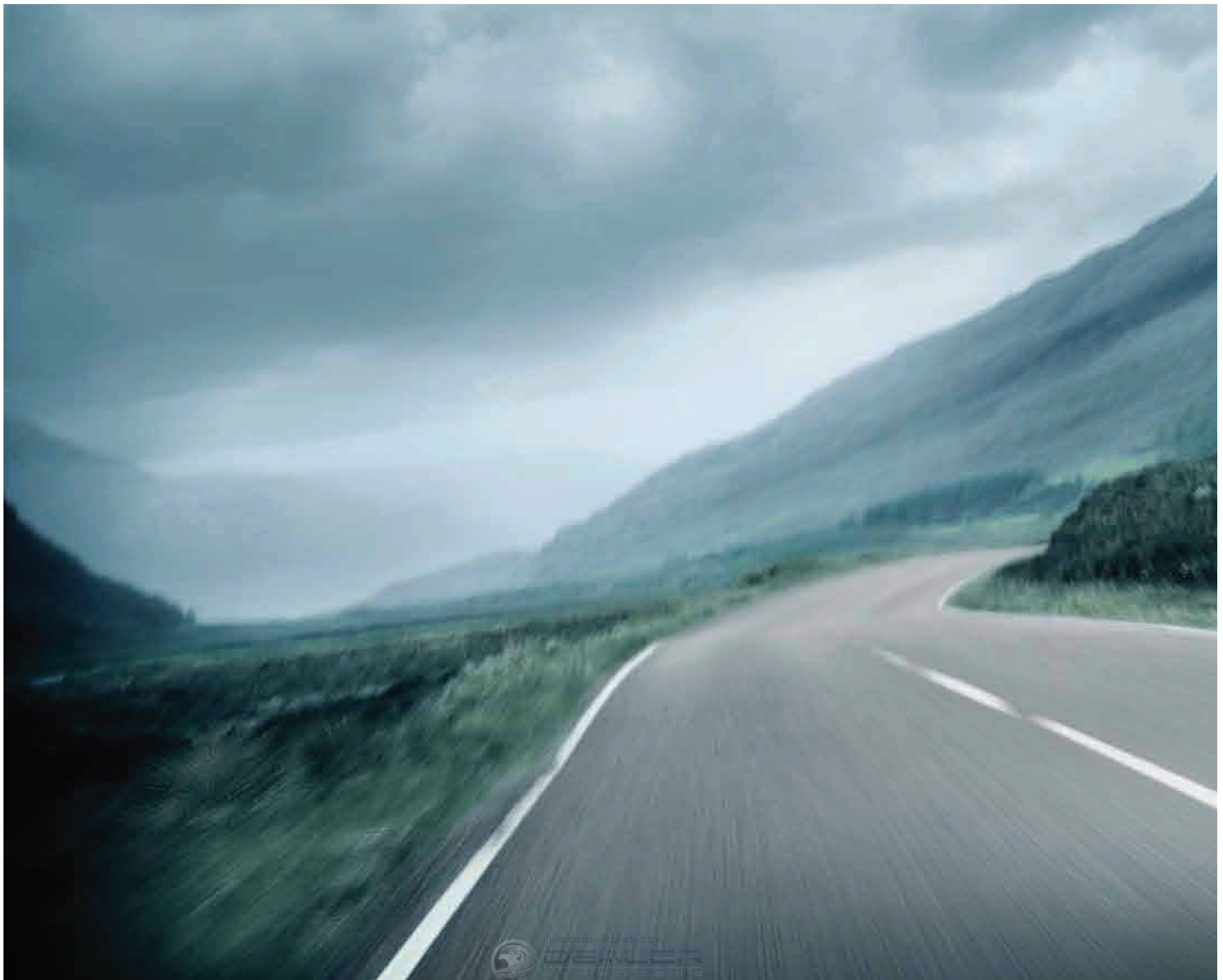




Go your own way.

A Bentley has never been an everyday sight, and it never will be. Choose your Continental GT V8 or GTC V8 in one of the seven core colours, four hide colours and (in the case of the Continental GTC) three hood colours and there's little chance that you'll see another quite like it.

But for some, the opportunity to add that extra touch of individuality is one of the joys of Bentley ownership, whether in exterior finish, accessories, equipment or interior colour splits. For those owners Bentley offers a wide spectrum of choice, from colour to interior features, including a unique interior colour split that's designed to highlight the V8's sporting character. They're detailed in the next few pages; somewhere in them is a Bentley that's made for you.





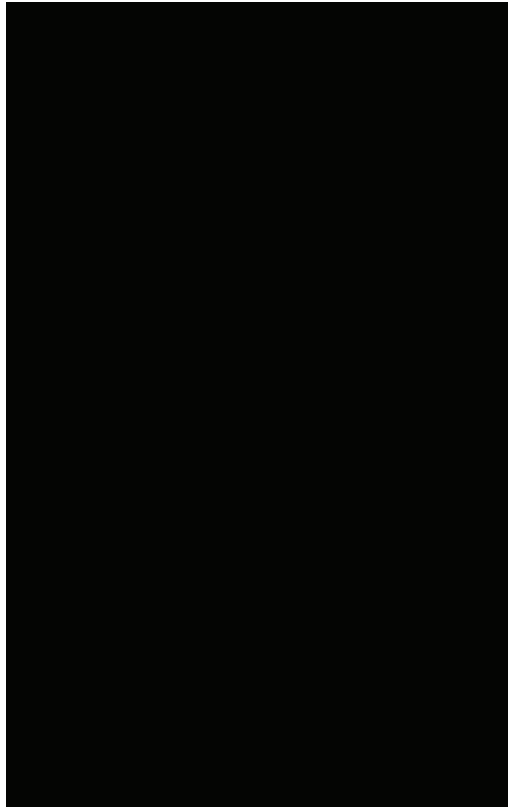
Blaze a trail.



Whilst the full gamut of Bentley colours is available when you choose the Extended Paint Range, there's one newly-introduced shade that wholly suits the fiery, sporting character of the new Continental V8 models. Dragon Red is unabashedly extrovert,

a searing pearlescent shade that will draw every eye as you drive past. It's not for the reclusive...but if you can handle the attention, it's the perfect match for the explosive power that's yours to experience at the press of the throttle.

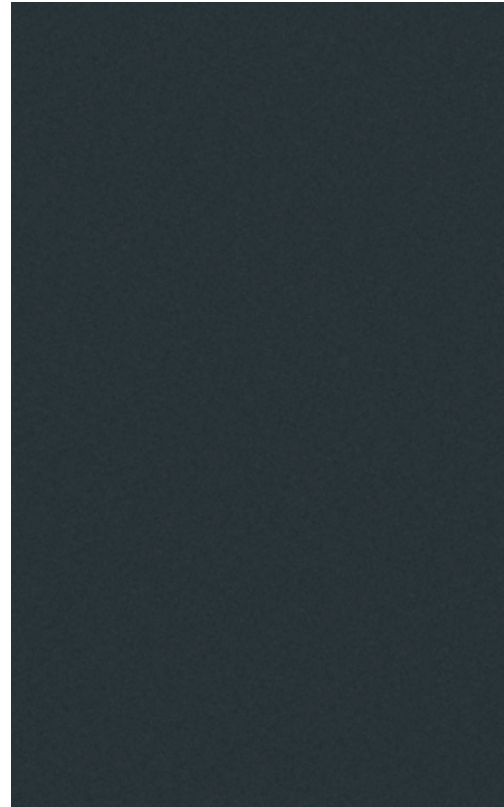
CORE PAINTWORK COLOURS



Beluga



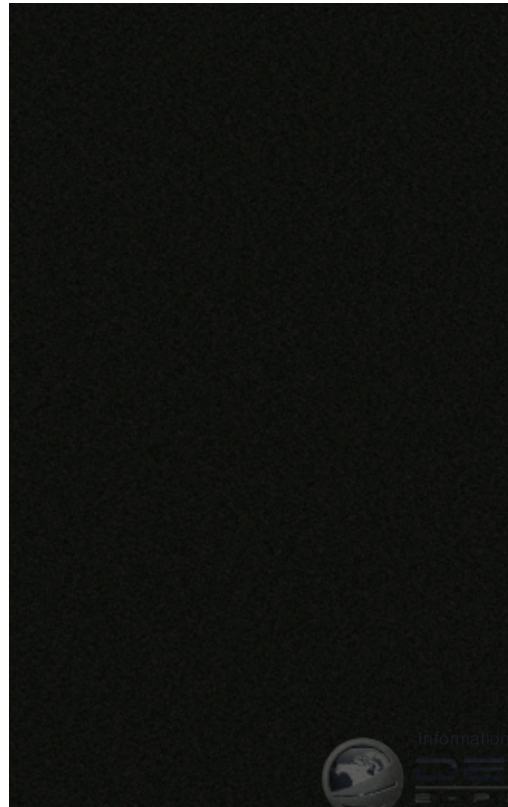
Dark Sapphire



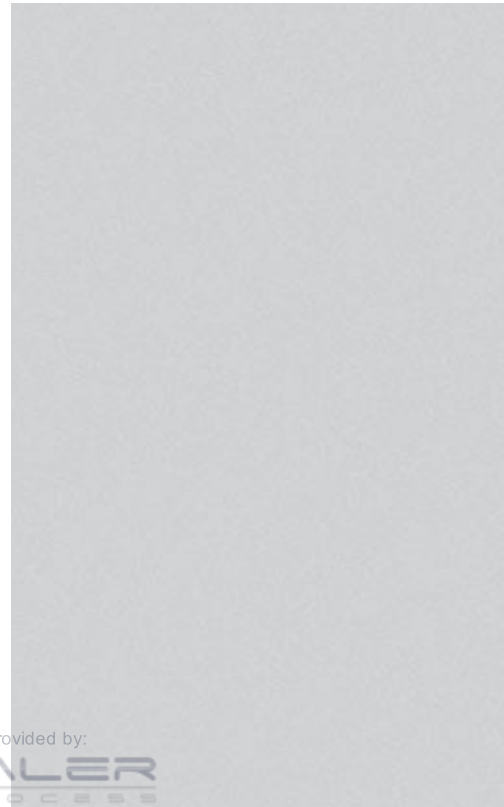
Thunder



St. James' Red

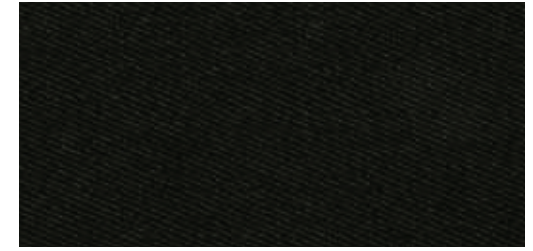


Onyx



Moonbeam

HOOD COLOURS



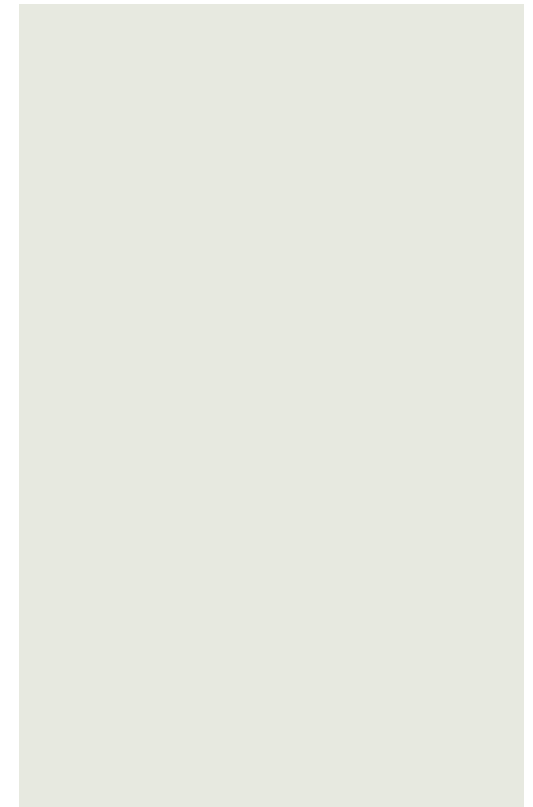
Black



Grey



Blue



Glacier White

V8 exterior colours.

Dragon Red – new for V8









Our bespoke commissions
cover the spectrum.



Maybe it's an old shirt that you can't bring yourself to throw away. An original art deco Grand Prix poster. Or even, perhaps, a Fender Telecaster that you bought at auction years ago. We all have objects in our lives that bring memories to life, colours that mean so much more to us than a finish on a paint chart.

Bentley's paint specialists understand. In recent years they have been asked to match a Bentley's paint finish to a nail polish, to a 50-year old classic car and even a toothbrush. And when we say match, we mean match exactly. That's quite a science, because the way a colour looks on wood or cloth takes considerable expertise to reproduce precisely on the mirror-smooth

aluminium and steel of a Bentley's bodywork. Colour is personal, just like a Bentley, and even though the full Bentley paint catalogue extends to over 100 shades, there are times when we simply put the paint swatches aside and start from scratch to match a bespoke commission.

Once the shade has been mixed, the real work begins. Only when the primer coat is considered flawless will the colour basecoat be applied by hand, after which come the lacquer coats and the patient process of sanding, flattening and polishing. At the end is your Bentley, in your chosen colour. And whatever rocks you is fine by us.

1963 Fender Telecaster®
in Custom Sonic Blue



Continental GTC V8
in Fender Sonic Blue



Information Provided by:
21" 6-SPOKE DIAMOND TURNED ALLOY WHEEL
(Shown in black machined finish, also available in painted or chrome finish)
Available as part of the Mulliner Driving Specification.



21" 6-SPOKE DIAMOND TURNED ALLOY WHEEL
(Shown in silver machined finish, also available in black or chrome* finish)
Available as part of the Mulliner Driving Specification.
*Chrome finish available from June 2012.



20" 5-SPOKE ALLOY WHEEL
(Shown in chrome finish, also available in painted finish)



21" 7-SPOKE ELEGANT
(Shown in painted finish, also available in chrome finish)



21" 10-SPOKE PROPELLER ALLOY WHEEL
(Shown in chrome* finish, also available in painted finish)
*Chrome finish available from Spring 2012.

Wheel options.

The Continental V8 models feature a 20" 5-spoke painted alloy wheel as part of the core specification, with the option of the same design in chrome finish. For an even more dramatic look there's a choice of 21" wheels developed by the Bentley design team to accentuate the sporting character of the V8 models, while the motorsport-derived detailing of the 21" black painted 6-spoke diamond turned sports wheel complements the Driving Specification. For full all-weather capability, winter compound tyres are available from your Bentley dealership.



20" WINTER TYRES



21" 7-SPOKE ELEGANT
(Shown in painted finish, also available in chrome finish)



21" 10-SPOKE PROPELLER ALLOY WHEEL
(Shown in chrome* finish, also available in painted finish)
*Chrome finish available from Spring 2012.



21" 6-SPOKE DIAMOND TURNED ALLOY WHEEL
(Shown in black machined finish, also available in painted or chrome* finish)
Available as part of the Mulliner Driving Specification.
*Chrome finish available from Spring 2012.




20" 5-SPOKE ALLOY WHEEL
(Shown in painted finish, also available in chrome finish)

Dark Fiddleback Eucalyptus – exclusive to Bentley V8



Information Provided by

DEALER
EXCLUSIVES



Dark Fiddleback Eucalyptus.
Another string to our bow.

For the Continental V8 models, Bentley's designers have selected Dark Fiddleback Eucalyptus, with its strong, 3D figuring and clean, straight graining, to complement the interior's sporty, contemporary character. Despite the name, there's no evidence that this characterful wood has ever been used for a violin back – but the distinctive stripe effect has a harmony all of its own. As with every veneer that Bentley offers, you can enjoy its depth of colour in the true, unbleached state, polished to an exceptional depth of gloss. At Crewe, craftsmanship always strikes the right note.

Burr Walnut



Dark Stained Burr Walnut



Information provided by



Chestnut



Bright Engine Spin



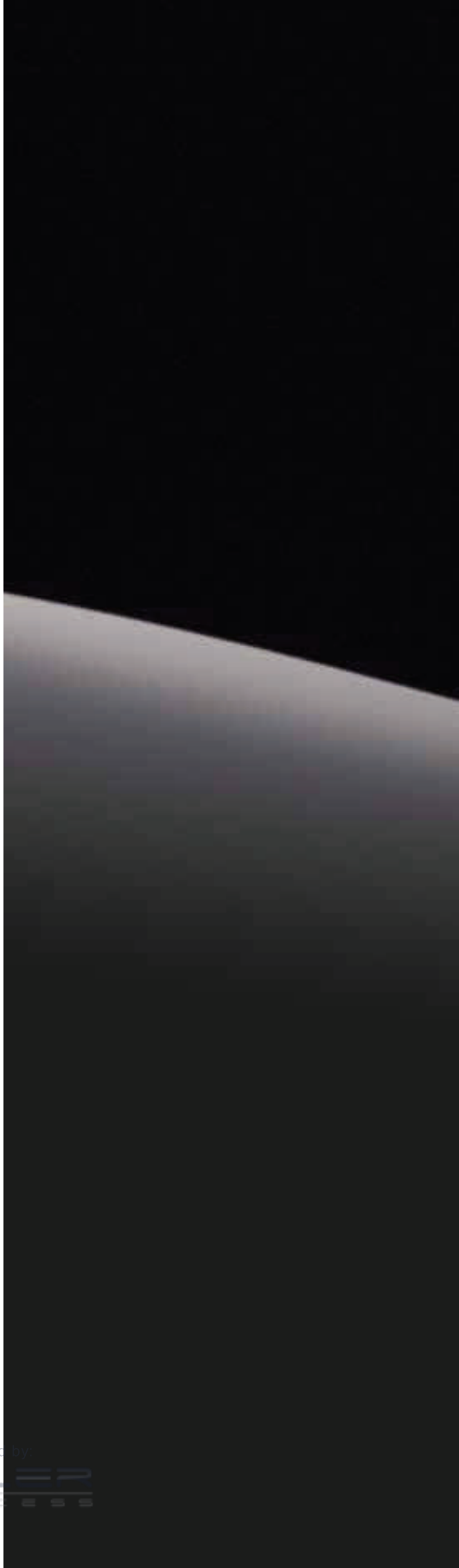
Madrona



Tamo Ash



Piano Black



Birds Eye Maple



Information Provided by





Hide options.

The core specification for the new Continental GT V8 and GTC V8 includes monotone upholstery in a choice of four traditional Bentley interior colours, selected by the design team as the perfect complement to the sporting character of the new models. All Bentley upholstery is tanned using a traditional method that recreates the classic aroma of coachbuilt leather upholstery. As Bentley does not sanction artificial surface graining, only the finest and most flawless hide is used.



When it comes to upholstery, our record is unblemished.



CONTRAST STITCHING



CROSS STITCH



PERFORATION

Nothing illustrates the exceptional nature of a Bentley's interior better than the quality of its leather and the skill with which it is crafted. The story of Bentley's upholstery begins with a special, traditional tanning process that retains the rich, natural aroma of classic Bentley interiors from decades back. Each skin is carefully examined, for Bentley refuses to imprint an artificially 'grained' surface embossing to disguise imperfections. Once checked and with each tiny blemish identified using ultra-violet marking tape, the hides are expertly laser-cut so that the sections that have the greatest amount of natural elasticity are used for surfaces such as the seats, rather than piping or the flatter surface of a door insert. Although the hide arrives in two-dimensional form, it will be shaped, stitched and worked around the complex multiple curves of seats and armrests. For the Continental cockpit, Bentley's

interior design team has created a cocoon of curved yet crisply-defined planes and surfaces that demands the highest standards of skill from their colleagues in the upholstery department. The result is well worth the hours of painstaking craftsmanship.

Choose the optional Colour Specification and you will be able to select from a near-infinite number of upholstery options, which make it possible to create an interior that is truly unique. Seventeen different hide colours are available, but that's only the beginning. You have the further choice of single or two-colour hide upholstery, with darker colours recommended for surfaces such as the fascia top roll, to prevent unwelcome reflections. Perforated and quilted hide is also available as an alternative to the straight fluted seat design, when you choose the Driving Specification.

Even when you have made your choice of primary and secondary hide colours, there's the option of hand-stitching to consider. Choose contrast stitching, and thread of a contrasting colour will be used for the stitching on the seats, doors, rear quarter panels, centre console and all armrests. You can, if you wish, also specify contrast stitching on the steering wheel. For the last word in hand-craftsmanship, you can choose hand cross-stitching on all four seats and outer armrests, or a Bentley winged 'B' embroidered on the headrests. Whatever your selection, the interior of your Bentley will be created by hand: on the underside of each piece of upholstery is the signature of its creator. A personal touch, for the most personal of choices.

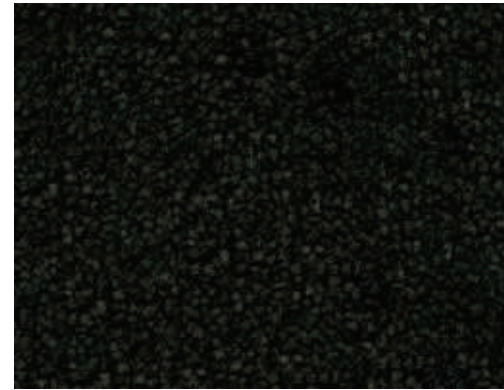




Inner harmony.

It's a matter of intense pride at Crewe that they consider the all-important details that make such a difference to the pleasure of ownership. Bentley's carpets, headlinings and even seat belt colours have been selected to harmonise precisely with your chosen shades of upholstery. If you choose the Colour Specification you'll find that you can even decide which of the two upholstery colours you would like to match the mats and seat belts to. Your Bentley dealer will have the full details to help make your choice an informed one.

CARPET COLOURS



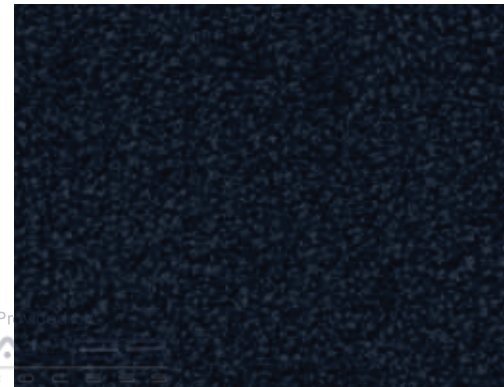
Beluga



Porpoise



Newmarket Tan



Imperial Blue

HEADLINING COLOURS



Beluga



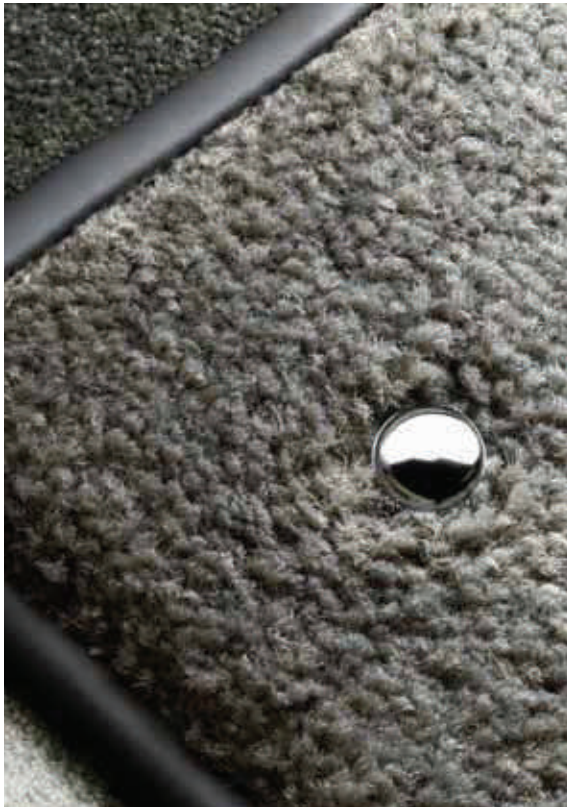
Blue



Grey



Saddle





The defining details.





Colour Specification.



As any Bentley dealer knows, colour is an intensely personal matter. Some owners delight in the understated shades of Beluga or Dark Sapphire. Others prefer to strike a more extrovert note. And while both extremes are catered for in the seven exterior finishes and four monotone hide colours that are available for the Continental V8 models, an even more extensive choice is offered with the Colour Specification.

Choose the Colour Specification for the Continental GT V8, and your palette of hide colours extends from four to seventeen. You can also choose from eight hide colour combinations (seven in the case of the GTC), including one that's unique to the V8 models. The Colour Specification replaces the Eliade cloth headlining with leather, and in addition to the V8's exclusive Dark Fiddleback Eucalyptus you can choose from a further

selection of seven veneers, including Birds Eye Maple, Burr Walnut, Chestnut, Madrona, Piano Black, Dark Stained Burr Walnut and Tamo Ash.

It's a similar story for the Continental GTC V8, but for this model the seventeen hide colours are available in a choice of seven core colour splits, including a unique colour split designed to complement the V8's lean, muscular and sporting character. The standard car's selection of three hood colours is also extended to a full eight colours.

Such an infinite range of choices and colour splits could be daunting, but fortunately the Bentley design team has provided a number of recommended colour choices, which your Bentley dealer will be delighted to discuss with you.



Driving Specification.



The workshops at Crewe, it is said, are the very opposite of mass production. Stand at the end of the line for a day, a week or a month and you won't see two identical Bentleys emerge at the end of their painstaking journey through the works. But a Bentley owner can never have too much choice, and in that spirit the design team at Crewe has created the Driving Specification.

Select it, and your Continental GT V8 or GTC V8 will feature 21" 6 twin-spoke alloy wheels in a menacing black with machined highlights. Inside, the sporting theme intensifies, with seats, door panels, and rear three-quarter panels upholstered in

quilted, perforated hide, the dramatic effect complemented by indented hide sun visors, a knurled sports gear lever and drilled alloy foot pedals. An indented hide headlining is included in the case of the GT V8, while embroidered Bentley emblems on the seat headrests are offered with both models at no extra cost. The effect is stunning, both inside and out.

As part of the Driving Specification, the full selection of hide colours, two-colour splits and (for the Continental GTC) hood colours offered in the Colour Specification are offered, extending the opportunity for individualisation still further.



Classic Mulliner Styling Specification.



Further scope for personalisation is offered with the Classic Mulliner Styling Specification, which features side sill extension blades, a rear bumper diffuser and front bumper lower splitter beautifully executed in black carbon fibre, with the Bentley

wings displayed beneath the lacquered surface of the sill blades. Optional 21" Elegant alloy wheels in black, carbon fibre wing mirrors and a carbon-fibre rear spoiler (for the GT) provide the perfect complement.



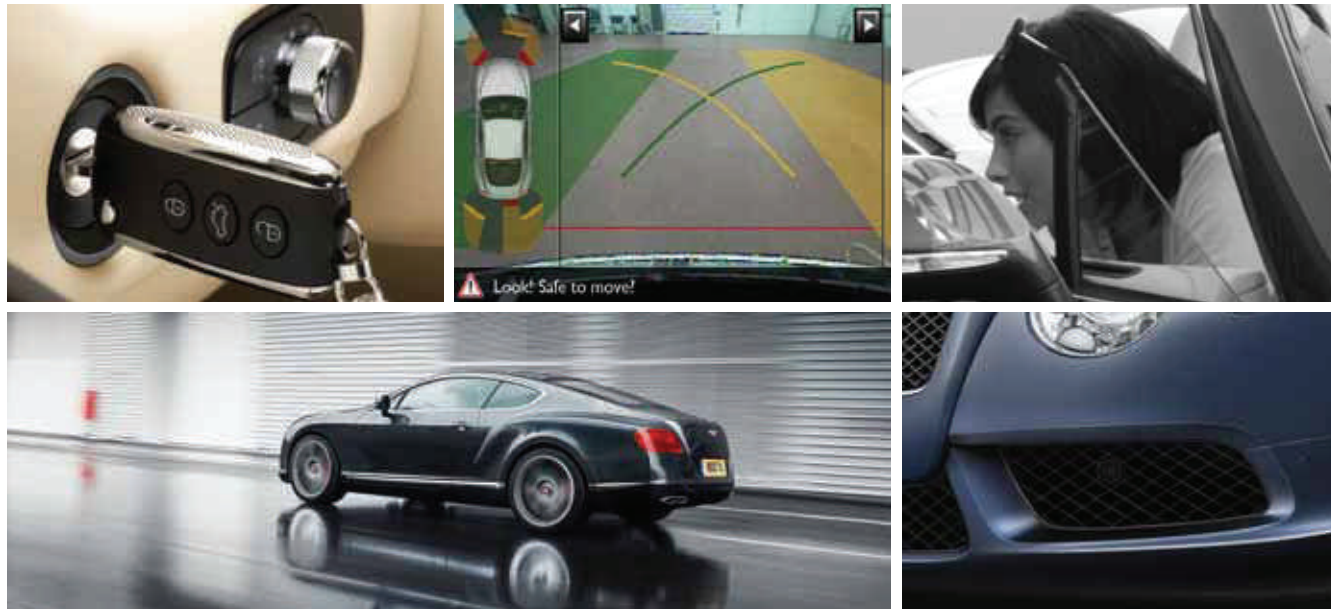
Touring Specification.



Two further optional specifications allow you to create a Continental GT V8 or GTC V8 that's ideal for your needs. The Touring Specification, as the name implies, offers extra stowage and luggage flexibility for the Continental GT V8. It includes a through-centre console that bisects the rear seat and offers

further storage space, twin front armrests, a central rear hide armrest, ski hatch and power operation of the boot. Continental GTC owners can order the power operated boot, twin-front armrests and ski hatch as separate options.

Convenience Specification.



The Convenience Specification includes Adaptive Cruise Control, with a radar sensor that measures the precise speed of vehicles in the lane ahead and modulates your speed accordingly, resuming the pre-set speed when the road ahead is clear. The V8 engine's advanced variable displacement technology will continue to switch seamlessly and undetectably between eight

and four-cylinder operation as the Adaptive Cruise Control adjusts your speed, even though your foot is not on the throttle pedal.

The Convenience Specification also includes a rear-view camera, an invaluable asset for the town-dweller when parking, and a valet key that limits the operation of certain controls by non-authorised drivers.

*A matter of
personal preference.*



Information provided by
DEALER



With four optional specifications to choose from, there's ample scope to create a Bentley Continental GT V8 or GTC V8 that meets your needs and tastes precisely. Yet further temptation is offered, with an additional selection of interior options. Continental GTC V8 owners wishing to enjoy the benefit of the ski hatch or twin front armrests can specify them individually (both are included in the Continental GT Touring Specification).

Alternatively Bentley can offer veneered door and rear quarter panel inserts, bright aluminium fascia panels or even a choice of hand-sewn, leather-trimmed steering wheels for both the V8 models. Two-tone hide, wood and leather and a heated single-tone steering wheel are all available; as the steering wheel is the most important tactile interface between driver and car, a little extra indulgence is surely permissible.

Choice selections.



At Bentley, it's a point of pride to offer a wide selection of exterior and interior colours, with veneers, duo-tone colour splits and all-important details such as wheels to create a near-infinite choice. But sometimes it can be helpful to narrow the choice down a little, or at least to define the kind of look you're aiming for. And who better to guide your choice than the people who created that choice? With that in mind, Bentley's designers have created a selection of suggested schemes, from the thunderously dramatic to the subtle and cool which you will see over the next few pages. And by scanning the QR code on this page with your enabled mobile or tablet device, you can browse through another 36 recommended specifications. The choice is yours. For further guidance, your Bentley dealer will be happy to help you bring the Bentley Continental V8 that lives in your mind's eye into reality.



CONTINENTAL GT V8



CONTINENTAL GTC V8



Information Provided by:

DEALER
E-PROCESS







Image Provided by:



Driving Specification and contrast stitching shown

Dragon Red.

Blazingly extrovert on the exterior, broodingly powerful inside, this specification expresses the full-throttle sensation of the new V8 engine. The combination of optional Dragon Red exterior finish with the bold contrasts of Linen and Beluga sets a modern, sporting and youthful mood. Piano Black and Bright Engine Spin fascia has echoes of the minimalistic Bentley racers of the past – though today's Bentley boasts every luxury.



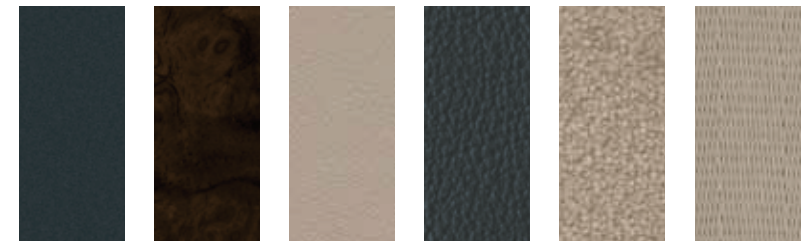


Driving Specification, Touring Specification
and contrast stitching shown

Information Provided by:
DEALER

Thunder.

Cool sophistication is the keynote of this specification, with the subtle, strong exterior finish in Thunder complemented by the duo-tone greys of Portland and Brunel Hides. The intense swirls of grain of the Dark Stained Burr Walnut add sophistication and warmth to the interior. A Continental GT for the driver who likes to travel under the radar – while revelling in Crewe handcraftsmanship at its best.



Paintwork
Thunder

Veneer
Dark Stained
Burr Walnut

Hide 1
Portland

Hide 2
Brunel

Carpet
Portland

Safety Belt
Portland



Driving Specification, Touring Specification
and contrast stitching shown

Information Provided by:
DEALER
ROCKETS

Amber.

The glowing, autumnal exterior finish of Amber from the Extended Paint Range is echoed by the warmth of the Madrona veneer within. A duo-tone Linen and Newmarket Tan interior colour split strikes just the right balance of freshness and contrast. The effect is a fusion of contemporary with classic – given an extra edge with the distinctive Mulliner Driving Specification.





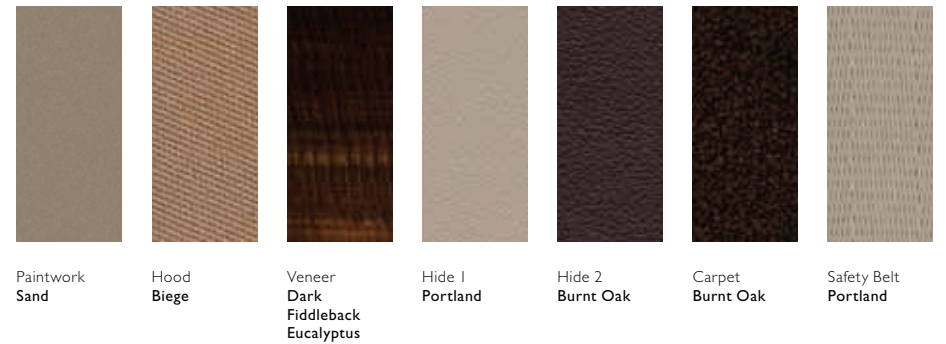
Information Provided by:



Driving Specification shown

Sand.

The lighter colours of Sand exterior finish with beige roof make this an ideal choice for warmer climates. The interior combination of Portland and Burnt Oak hides, Burnt Oak carpet and Dark Fiddleback Eucalyptus veneer gives an air of understated chic. A sophisticated specification, yet with a touch of youthfulness exemplified by the non-traditional figure of the Dark Fiddleback Eucalyptus.





Driving Specification and Touring Specification shown



Blue Crystal.

The GTC's deep metallic Blue Crystal exterior paint finish is perfectly complemented by the co-ordinating Blue hood, Dark Bourbon and Imperial Blue hides. The Dark Fiddleback Eucalyptus veneer adds warmth and individuality while bringing out the tone in the Dark Bourbon hide. As elegantly sophisticated as the Continental GTC itself.





Information Provided by:



Driving Specification and contrast stitching shown

Beluga.

The Beluga paintwork and black hood gives the GTC an air of serious performance – which its 500bhp V8 engine amply justifies. Inside, the high contrast of Magnolia and Beluga hides continue the sporting mood, while the dramatic figure of Tamo Ash co-ordinates beautifully with the Magnolia hide. Hood down, the Tamo Ash develops a near-3D effect in sunlight. A focused high-performance convertible with a sensuous side.



GT and GTC V8 Accessories.



SELF-LEVELLING WHEEL BADGES.

The pleasure of owning a Bentley is enhanced by small details of perfect craftsmanship. The self-levelling badges for Bentley wheels always present the famous 'B' at the correct, horizontal angle so that whenever you come to rest, all four will be perfectly aligned. Available in red, to match the red enamel winged 'B' of the new V8 Continental models, each one is a marvel of precision

engineering, and all four come in a presentation pack, making them an ideal gift. Alternatively, you can give night driving a sense of occasion as you enter the cockpit across the threshold of Bentley's illuminated treadplates. Another pleasing detail is the rechargeable torch with its distinctive knurled finish, matching that of your Bentley's controls.

On a more practical note, car covers are available for both the Continental GT V8 and GTC V8 models, while the car care products designed exclusively for Bentley by Autoglym will help preserve your car's showroom-fresh appearance.

Please contact your Bentley dealer representative for details of the full accessories range.





INDOOR CAR COVER
AVAILABLE PERSONALISED



SELF LEVELLING WHEEL BADGES
IN PRESENTATION BOX



ILLUMINATED TREADPLATES



JEWEL FUEL FILLER CAP



DRIVING GLOVES
Available in red for ladies and black for gents



LEATHER WEEKENDER BAG



iPAD LEATHER WALLET
Available in red and black



LEATHER KEY FOB
Available in red and black



**iPHONE AND BLACKBERRY
LEATHER COVER**
Available in red and black



The GT and GTC V8 collection.



ESTEDE FOR BENTLEY SUNGLASSES

At Crewe, they take the heritage of the Bentley wings, designed by artist F. Gordon Crosby, very seriously indeed. That's why everything that carries them, from a high-performance grand tourer to a 1:43 scale model of the same car, has to be made to exceptional standards and approved by the Bentley design team. As a result, you can browse the personal accessories and gifts in the Bentley Collection in the knowledge that your choice will

give pleasure for years to come. For example, Estede for Bentley sunglasses combine precious metals with the latest in optical and eyewear technology – and as a finishing touch the cases are available in all the Bentley hide colours. Other beautifully-crafted personal accessories include Ettinger of London's range of leather goods, including iPad wallets and leather key fobs, or the soft, tactile leather of a pair of Pittards Cabretta driving

gloves. From luggage to leisurewear, small gift to wild indulgence, the Collection is everything you expect of Bentley. Distinctive, rare and made to last.

Please contact your Bentley dealer representative for details on the full accessories range. For the Collection, visit www.bentleycollection.com or ask your dealer for a brochure.

Standard specification GT V8.

POWERTRAIN AND CHASSIS

Type:	4-litre twin turbocharged V8
Max Power:	500bhp / 373kW / 507PS @ 6000rpm
Max Torque:	660Nm / 487lb.ft @ 1700 rpm
Transmission:	8-speed ZF transmission with Quickshift and steering column mounted gearshift paddles
Driveline:	Permanent all-wheel drive with 40:60 front to rear torque split
Ratios:	1st. 4.71, 2nd. 3.14, 3rd. 2.1, 4th. 1.67, 5th. 1.29, 6th. 1.00, 7th. 0.839, 8th. 0.667 Reverse. 3.317 Bentley branded 'T' piece engine cover

BODY CONSTRUCTION

Type:	Steel monocoque
-------	-----------------

BRAKES

Brake system with Electronic Stability Programme (ESP), Anti-lock Braking System (ABS), Electronic Brake Force Distribution (EBD), Hydraulic Brake Assistance (HBA), Drag Torque Control (MSR) and aquaplane detection

Vented iron front and rear disc brakes with Bentley branded brake callipers in gloss black finish

Electronic parking brake with drive away assist

WHEELS & TYRES

Wheel size:	20" 5-spoke alloy wheels in painted finish with red wheel centre badges
Tyre size:	275/40ZR20 (optional 275/35ZR21 linked to option wheels)

Electronic tyre pressure monitoring system (TPMS)

STEERING

Type:	Speed sensitive power steering
Turns lock to lock:	2.6 turns
Turning circle:	11.4m

SUSPENSION

Front:	Four link double wish-bones, computer controlled self-levelling air suspension, with anti roll-bar
Rear:	Trapezoidal multi-link, computer-controlled self-levelling air suspension, with anti roll-bar
Damping:	Air springs with Continuous Damping Control (CDC)

DIMENSIONS

Wheelbase:	2746mm / 9ft
Overall Length:	4806mm / 15ft 9in
Width (across body):	1943mm / 6ft 3in
Width (including mirrors):	2227mm / 7ft 3in
Overall Height:	1404mm / 4ft 7in
Fuel Tank:	90litres / 20 gallons / 24 US gallons
Boot Volume:	358 litres / 12.6 cu ft
Kerb Weight EU:	2295kg / 5060lb
Gross Weight:	2750kg / 6063lb

PERFORMANCE

Top speed:	188mph (303 km/h)
0 - 60mph:	4.6 secs (0-100km/h in 4.8secs)
0 - 100mph:	11.1 secs (0-160km/h in 11.1 secs)
50 - 70mph:	2.5 secs (80-120 km/h in 3.2 secs)

FUEL CONSUMPTION (EU CYCLE)*

Urban:	18.4mpg (15.4 l/100km)
Extra Urban:	36.7 mpg (7.7 l/100km)
Combined:	26.7mpg (10.5 l/100km)
CO ₂ emissions:	246 g/km

* Fuel consumption figures are provisional and subject to Type Approval
US EPA fuel consumption figures not available at time of print.
Please refer to www.bentleymotors.com for details.

EXTERIOR SPECIFICATION

- Black Bentley matrix grille integrated into bonnet with bright surround and centre strip
- Red winged 'B' badge to radiator shell and boot lid
- Black lower rear bumper valance
- Rear diffuser
- Bi-Xenon projector headlamps with LED signature daylight running lamps, LED main beam supplementation and integrated washer jets
- Full LED rear lamps with jewellery-effect inner lamp treatment
- Rear fog and reversing lamps, high level rear brake light
- Twilight sensor control and tunnel detection for lighting
- Door area lighting in lower edge of exterior mirrors and entrance lighting in lower edge of each door
- Concealed rear aerofoil with automatic deployment
- Colour coded electronically adjustable door mirrors with heating, power folding and memory functions

- Power latching to driver and passenger doors for easy entry and exit
- Rain sensing windscreen wipers
- Acoustic interlayer to side and rear glass
- Keyless entry and ignition
- Standard fuel filler cap
- Central locking with remote boot release
- Twin figure-of-eight stainless steel tailpipes
- Choice of 7 exterior paint colours: Beluga, Dark Sapphire, Glacier White, Moonbeam, Onyx, St. James' Red, Thunder

INTERIOR SPECIFICATION

- Full premium grade hide interior with a choice of 4 colours: Beluga, Imperial Blue, Porpoise, Newmarket Tan
- Slim design power adjustable front seats with heating, lumbar, nose extension and memory functions
- 4 seat configuration with straight flutes
- Driver's front seat 14 way adjustment & memory including lumbar and nose extension
- Passenger's seat 14 way adjustment & memory including lumbar (12 way in North America)
- Isofix rear seat fixings
- Short centre console with single armrest
- Dark Fiddleback Eucalyptus veneer to fascia panels and console
- Eliade cloth headlining in four colours: Beluga, Grey, Blue, Saddle
- Breitling clock
- 1 monotone interior colour split
- Boot carpet in black (Beluga)
- Seat belts and leather-bound carpets to match all hide colours
- Single-tone, hide-trimmed, 3-spoke, multi-function steering wheel
- Bulls-eyes air vents with chrome organ stop controls
- Electric tilt and reach adjustment steering column with memory and easy entry and exit functions
- Treadplates with embossed 'BENTLEY' word
- Automatic seat belt presenter
- Footwell and centre console stowage illumination
- Touch screen infotainment system with 8" high resolution screen and incorporating AM/FM radio, HDD navigation, external media interface, single DVD/CD slot, single SD card slot, integrated HVAC controls, telephone control with Bluetooth wireless connectivity, suspension settings and TPMS features – voice activation on infotainment system features*
- Satellite radio (Sirius)*
- 8 channel, 8 speaker audio system with Balanced mode Radiator (BMR) speakers

Optional specification GT V8.

- Multi-zone automatic climate control system
- Volumetric ultrasonic alarm
- Bentley GPS tracking system provision
- Park distance control with graphic on infotainment screen and audible warning
- Foot pedals with Bentley 'B' emblem
- Hide and chrome trimmed gear lever with manual shift change facility
- Driver and front passenger airbag with front passenger deactivation, driver's knee airbag (North America only)
- Front and rear side and thorax airbags

*market specific



BENTLEY
FINANCIAL SERVICES

Bentley Financial Services are available. Please contact your Bentley dealer representative, who can advise you on a finance plan specially tailored for your needs.

EXTERIOR

- Jewel fuel filler cap
- Standard brakes with red callipers
- Carbon ceramic brakes with black callipers
- 20" 5-spoke alloy wheel – chromed
- 21" 7-spoke elegant alloy wheel – painted or chromed
- 21" 10-spoke propeller alloy wheel – painted or chromed (Chrome available from spring 2012)
- 21" 6 twin-spoke alloy wheels – black machined (only available as part of the Driving Specification) Painted or chromed (Chrome available from June 2012)
- Winter tyres
- 20" Space saving spare wheel & tyre in lieu of tyre inflation kit*
- 123 additional exterior paint colours & bespoke colour matching service
- Power boot opening and closing

INTERIOR

- Choice of 7 additional veneers: Chestnut, Burr Walnut, Dark Stained Burr Walnut, Bird's Eye Maple, Madrona, Piano Black or Tamo Ash (only available with Colour Specification)
- Choice of 13 additional hide colours: Dark Bourbon, Brunel, Saffron, Magnolia, Fireglow, Hotspur, Cumbrian Green, Savannah, Aquamarine, Linen, Burnt Oak, Breeze, Portland (only available with Colour Specification)
- Choice of 7 additional colour splits, including V8 unique duo-tone seats split (only available with Colour Specification)
- Bright tint aluminium fascia panels
- Veneer door and rear quarter inserts to match main veneer (only available with Touring Specification)
- Veneer rear centre armrest (only available with Touring Specification)
- Veneer stowage case (to match main veneer)
- Deep pile overmats to front and rear (in lieu of standard mats)
- Lambswool rugs to front, in addition to deep pile overmats
- Dual tone, 3-spoke, hide trimmed steering wheel (not available with Breeze)
- Heated, single tone, 3-spoke hide trimmed steering wheel
- Wood and hide 3-spoke steering wheel (not available with Bird's Eye Maple or Dark Fiddleback Eucalyptus)
- Boot carpet to match main or secondary hide
- Contrast binding to interior carpet overmats
- Contrast binding to boot carpets (only available with contrast binding to overmats)

- Contrast stitching
- Hand cross stitching
- Bentley wings emblem stitching
- Drilled alloy sports foot pedals
- Knurled sports gear lever
- Hide trimmed gear paddles*
- Personalised treadplate plaques
- Personalised embroidery to seat headrests

CONVENIENCE

- Adaptive cruise control*
- GPS tracking system provision, in addition to standard alarm system*
- GPS tracking system full fitment, in addition to standard alarm system*
- Remote control garage / electronic gate opener*
- Naim® for Bentley Premium Audio System
- 6-disc CD changer fitted in glovebox
- TV tuner*
- Front ashtray with cigar lighter
- Front and rear ashtray with cigar lighter (only available with Touring Specification)
- Massage seats and seat ventilation to front seats
- Park heater with remote control*
- Bluetooth telephone system with privacy handset (only available with Touring Specification)
- Rear view camera*
- Valet parking key
- First aid kit and warning triangle
- Personalised car cover
- Driving Specification
- Touring Specification
- Colour Specification
- Convenience Specification
- Mulliner Styling Specification – Classic
- Mulliner Styling Specification – Complementary features

*market specific

#please contact your Bentley representative for further details

Standard specification GTC V8.

POWERTRAIN AND CHASSIS

Type:	4-litre twin turbocharged V8
Max Power:	500bhp / 373kW / 507PS @ 6000rpm
Max Torque:	660Nm / 487lb.ft @ 1700 rpm
Transmission:	8-speed ZF transmission with Quickshift and steering column mounted gearshift paddles
Driveline:	Permanent all-wheel drive with 40:60 front to rear torque split
Ratios:	1st. 4.71, 2nd. 3.14, 3rd. 2.1, 4th. 1.67, 5th. 1.29, 6th. 1.00, 7th. 0.839, 8th. 0.667 Reverse. 3.317 Bentley branded 'T' piece engine cover

BODY CONSTRUCTION

Type:	Steel monocoque
-------	-----------------

BRAKES

Brake system with Electronic Stability Programme (ESP), Anti-lock Braking System (ABS), Electronic Brake Force Distribution (EBD), Hydraulic Brake Assistance (HBA), Drag Torque Control (MSR) and aquaplane detection.

Vented iron front and rear disc brakes with Bentley branded brake callipers in gloss black finish

Electronic parking brake with drive away assist

WHEELS & TYRES

Wheel size:	20" 5-spoke alloy wheels in painted finish with red wheel centre badges
Tyre size:	275/40ZR20 (optional 275/35ZR21 linked to option wheels)

Electronic tyre pressure monitoring system (TPMS)

STEERING

Type:	Speed sensitive power steering
Turns lock to lock:	2.6 turns
Turning circle:	11.4m

SUSPENSION

Front:	Four link double wish-bones, computer controlled self-levelling air suspension, with anti roll-bar
Rear:	Trapezoidal multi-link, computer-controlled self-levelling air suspension, with anti roll-bar
Damping:	Air springs with Continuous Damping Control (CDC)

DIMENSIONS

Wheelbase:	2746mm / 9ft
Overall Length:	4806mm / 15ft 9in
Width (across body):	1943mm / 6ft 3in
Width (including mirrors):	2227mm / 7ft 3in
Overall Height:	1403mm / 4ft 7in
Fuel Tank:	90litres / 20 gallons / 24 US gallons
Boot Volume:	260 litres / 9.1 cu ft
Kerb Weight EU:	2470kg / 5445lb
Gross Weight:	2900kg / 6393b

PERFORMANCE

Top speed:	187mph (301 km/h)
0 - 60mph:	4.7 secs (0-100km/h in 5secs)
0 - 100mph:	11.4 secs (0-160 km/h in 11.4 secs)
50 - 75mph:	2.5 secs (80-120 km/h in 3.2 secs)

FUEL CONSUMPTION (EU CYCLE)*

Urban:	17.9mpg (15.8 l/100km)
Extra Urban:	35.3 mpg (8 l/100km)
Combined:	25.9 mpg (10.9 l/100km)
CO ₂ emissions:	254g /km

* Fuel consumption figures are provisional and subject to Type Approval
US EPA fuel consumption figures not available at time of print.
Please refer to www.bentleymotors.com for details.

EXTERIOR SPECIFICATION

- Black Bentley matrix grille integrated into bonnet with bright surround and centre strip
- Red winged 'B' badge to radiator shell and boot lid
- Black lower rear bumper valance
- Rear diffuser
- Bi-Xenon projector headlamps with LED signature daylight running lamps, LED main beam supplementation and integrated washer jets
- Full LED rear lamps with jewellery-effect inner lamp treatment
- Rear fog and reversing lamps, high level rear brake light
- Twilight sensor control and tunnel detection for lighting
- Door area lighting in lower edge of exterior mirrors and entrance lighting in lower edge of each door
- Colour coded electronically adjustable door mirrors with heating, power folding and memory functions

- Power latching to driver and passenger doors for easy entry and exit
- Rain sensing windscreen wipers
- Acoustic interlayer to side and rear glass
- Keyless entry and ignition
- Standard fuel filler cap
- Central locking with remote boot release
- Twin figure-of-eight stainless steel tailpipes
- Spoiler integrated into composite boot lid made from Sheet Moulding Compound (SMC)
- Choice of 7 exterior paint colours: Beluga, Dark Sapphire, Glacier White, Moonbeam, Onyx, St. James' Red, Thunder
- Automatically folding, 4-Layer, Insulated Fabric Hood in 3 colours: Black, Blue, Grey

INTERIOR SPECIFICATION

- Full premium grade hide interior with a choice of 4 colours: Beluga, Imperial Blue, Porpoise, Newmarket Tan
- Slim design power adjustable front seats with heating, lumbar, nose extension and memory functions
- 4 seat configuration with straight flutes
- Driver's front seat 14 way adjustment & memory including lumbar and nose extension
- Passenger's seat 14 way adjustment & memory including lumbar (12 way in North America)
- Isofix rear seat fixings
- Short centre console with single armrest
- Dark Fiddleback Eucalyptus veneer to fascia panels and console
- Roof interior in four colours: Beluga, Grey, Blue, Saddle
- Breitling clock
- 1 monotone interior colour split
- Boot carpet in black (Beluga)
- Seat belts and leather-bound carpets to match all hide colours
- Single-tone, hide-trimmed, 3-spoke, multi-function steering wheel
- Bulls-eyes air vents with chrome organ stop controls
- Electric tilt and reach adjustment steering column with memory and easy entry and exit functions
- Treadplates with embossed 'BENTLEY' word
- Automatic seat belt presenter
- Footwell and centre console stowage illumination

Optional specification GTC V8.

- Touch screen infotainment system with 8" high resolution screen and incorporating AM/FM radio, HDD navigation, external media interface, single DVD/CD slot, single SD card slot, integrated HVAC controls, telephone control with Bluetooth wireless connectivity, suspension settings and TPMS features – voice activation on infotainment system features*
- Satellite radio (Sirius)*
- 8 channel, 8 speaker audio system with Balanced mode Radiator (BMR) speakers
- Multi-zone automatic climate control system
- Volumetric ultrasonic alarm
- Bentley GPS tracking system provision
- Park distance control with graphic on infotainment screen and audible warning
- Foot pedals with Bentley 'B' emblem
- Hide and chrome trimmed gear lever with manual shift change facility
- Driver and front passenger airbag with front passenger deactivation, driver's knee airbag (North America only)
- Front side and thorax airbags

*market specific



BENTLEY
FINANCIAL SERVICES

Bentley Financial Services are available. Please contact your Bentley dealer representative, who can advise you on a finance plan specially tailored for your needs.

EXTERIOR

- Jewel fuel filler cap
- Standard brakes with red callipers
- Carbon ceramic brakes with black callipers
- 20" 5-spoke alloy wheel – chromed
- 21" 7-spoke elegant alloy wheel – painted or chromed
- 21" 10-spoke propeller alloy wheel – painted or chromed (Chrome available from spring 2012)
- 21" 6 twin-spoke alloy wheels – black machined (only available as part of the Driving Specification) Painted or chromed (Chrome available from June 2012)
- Winter tyres
- 20" Space saving spare wheel & tyre in lieu of tyre inflation kit*
- 123 additional exterior paint colours & bespoke colour matching service
- Power boot opening and closing

INTERIOR

- Choice of 7 additional veneers: Chestnut, Burr Walnut, Dark Stained Burr Walnut, Bird's Eye Maple, Madrona, Piano Black or Tamo Ash (only available with Colour Specification)
- Choice of 13 additional hide colours: Dark Bourbon, Brunel, Saffron, Magnolia, Fireglow, Hotspur, Cumbrian Green, Savannah, Aquamarine, Linen, Burnt Oak, Breeze, Portland (only available with Colour Specification)
- Choice of 5 additional hood colours: Beige, Claret, Dark Brown, Green, Dark Grey Metallic (only available as part of the Colour Specification and Dark Grey Metallic subject to an additional cost)
- Choice of 6 additional colour splits, including V8 unique duo-tone seats split (only available with Colour Specification)
- Bright tint aluminium fascia panels
- Veneer door and rear quarter inserts to match main veneer
- Veneer stowage case (to match main veneer)
- Deep pile overmats to front and rear (in lieu of standard mats)
- Lambswool rugs to front, in addition to deep pile overmats
- Dual tone, 3-spoke, hide trimmed steering wheel (not available with Breeze)
- Heated, single tone, 3-spoke hide trimmed steering wheel
- Wood and hide 3-spoke steering wheel (not available with Bird's Eye Maple or Dark Fiddleback Eucalyptus)
- Boot carpet to match main or secondary hide

- Contrast binding to interior carpet overmats
- Contrast binding to boot carpets (only available with contrast binding to overmats)
- Contrast stitching
- Hand cross stitching
- Bentley wings emblem stitching
- Drilled alloy sports foot pedals
- Knurled sports gear lever
- Hide trimmed gear paddles#
- Personalised treadplate plaques
- Personalised embroidery to seat headrests

CONVENIENCE

- Adaptive cruise control*
- GPS tracking system provision, in addition to standard alarm system*
- GPS tracking system full fitment, in addition to standard alarm system*
- Remote control garage / electronic gate opener*
- Naim® for Bentley Premium Audio System
- 6-disc CD changer fitted in glovebox
- TV tuner*
- Twin front armrests
- Ski hatch
- Front ashtray with cigar lighter
- Front and rear ashtray with cigar lighter (only available with twin front armrests)
- Massage seats and seat ventilation to front seats
- Electronically adjustable neck warmer
- Manually fitting windstop
- Park heater with remote control*
- Bluetooth telephone system with privacy handset (only available with twin front armrests)
- Rear view camera*
- Valet parking key
- First aid kit and warning triangle
- Personalised car cover
- Driving Specification
- Colour Specification
- Convenience Specification
- Mulliner Styling Specification – Classic
- Mulliner Styling Specification – Complementary features

*market specific

#please contact your Bentley representative for further details





BENTLEY

Bentley Motors Limited, Pym's Lane, Crewe, Cheshire CW1 3PL, England.

www.bentleymotors.com

The items presented in this brochure are subject to further development and the specifications can change. Your Bentley dealer will always have the latest information.
The names 'Bentley', 'Mulliner', the 'B' in wings device, Autoglym, Bluetooth, Dents, Estede, Fender, Google, iPod, Naim and Telecaster are registered trademarks.

© January 2012 Bentley Motors Limited. Printed in England.

