



2016



RAM
COMMERCIAL

RAM PROMASTER CITY



BUILT TO BE THE BEST IN THE CITY AND THE CLASS.



THE 2016 RAM PROMASTER CITY® CARGO VAN AND PASSENGER WAGON. From the standpoints of power, capability and quality, they're Ram all the way. But these right-sized workhorses also bring welcome economies of scale and cost-effective practicality to the jobsite and the family garage. With an impressive list of best-in-class features where they count the most, the Ram ProMaster City models are keys to success just awaiting their turn to serve.

ProMaster City Cargo Van: with its best-in-class^[1] payload and cargo capacity, it proves itself worthy of the Ram's Head logo. ProMaster City Passenger Wagon: designed-in versatility with enormous space to accommodate five occupants and serious luggage—just the ticket

for a business shuttle or go-to choice for family transportation. Both models: huge interior (with best-in-class^[1] width between the wheel wells), stunning levels of comfort and technology, and a powertrain combination that includes a class-exclusive^[1] 9-speed automatic transmission and translates into 29 mpg hwy[†]. Ram ProMaster City doesn't merely stand out. It stands up to any competitive wannabe out there.

Here's what works: design and build a Ram with these credentials, and you're ready for virtually any job application. For specs, costs, comparisons and the opportunity to build your own virtual model, click over to RAMTRUCKS.COM/PROMASTERCITY



BEST-IN-CLASS^[1] PAYLOAD: Ram ProMaster City Cargo Van—up to 1,883 lb.

BEST-IN-CLASS^[1] CARGO CAPACITY: Ram ProMaster City Cargo Van—131.7 cubic feet.

BEST-IN-CLASS^[1] CARGO WIDTH BETWEEN THE WHEEL WELLS: 48.4-inch width, allowing transport of a standard pallet.

BEST-IN-CLASS^[2] HORSEPOWER AND TORQUE WITH STANDARD ENGINE CONFIGURATION: 178 hp and 174 lb-ft of torque, achieving 0–30 mph in 3.7 seconds.

UNSURPASSED^[1] TOWING: Ram ProMaster City Cargo Van—2,000-lb max towing, when properly equipped.

SUPERB PROTECTION AND VALUE: a 5-Year/60,000-Mile Powertrain Limited Warranty.^[3]



*A note about this brochure: all disclaimers and disclosures can be found on page 20.
[†]EPA estimated 21 mpg city/29 mpg hwy. Actual results may vary.





BEST-IN-CLASS^[1] CARGO CAPACITY



131.7 CUBIC FEET

Properly secure all cargo.





IT'S GOT THE MUSCLE TO DO BIG JOBS. AND THE BRAINS TO DO IT RIGHT. EVERY TIME.

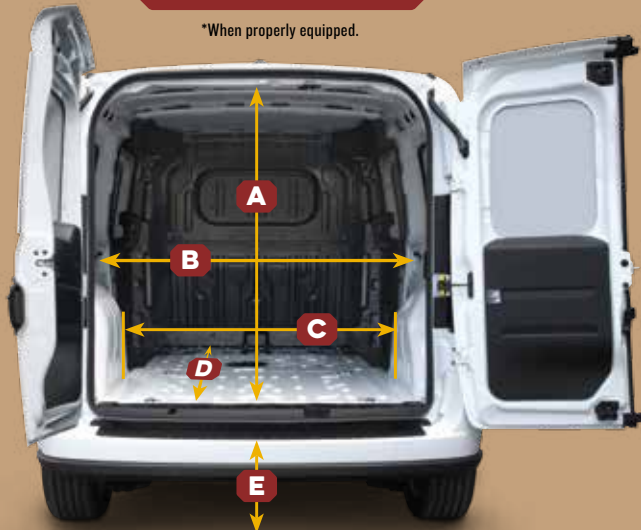
It carries credentials and cargo with ease. The Ram ProMaster City® 2.4-liter Tigershark® four-cylinder with MultiAir®2 technology teams up with a class-exclusive^[1] 9-speed automatic for exceptional power and spirited 0–30 mph times—while still delivering stellar fuel-efficient performance. Both Cargo Van Tradesman® and Tradesman SLT trim levels offer a vast rear area with **cargo floor length greater than 7 feet**. Loading pallets? **Huge 48-inch-wide rear door openings** let you access the **best-in-class^[1] 48.4-inch cargo width between the wheel wells**, the just right dimensions for a standard loaded pallet.

Extra-spacious room for large items—like kitchen or laundry appliances—is designed-in, with **51.8 inches from floor to interior roof**. Add convenient passenger-side and rear overhead lamps in the cargo compartment and six D-type tie-down rings (integrated in the floor, with 34-psi static load capability, and up to 1,000-lb system capacity when in use). It all culminates in pure Ram leadership: **best-in-class^[1] cargo capacity of 131.7 cubic feet and best-in-class^[1] payload up to 1,883 pounds**. From deliveries to custom upfits, this Cargo Van is ready from the get-go, and ideally suited for specific tailoring, thanks to the many available Mopar® accessories.

ROOF WEIGHT CAPACITY

154 LB*

*When properly equipped.



A	CARGO AREA HEIGHT	51.8"
B	CARGO AREA WIDTH	60.4"
C	CARGO WIDTH BETWEEN WHEEL WELLS^[1]	48.4"
D	CARGO AREA LENGTH	87.2"
E	REAR LIFT IN HEIGHT	23.3"



Properly secure all cargo.



BEST-IN-CLASSTM PAYLOAD



1,883 LBS



**BEST-IN-CLASSTM CARGO WIDTH
BETWEEN THE WHEEL WELLS**



48.4 IN

Properly secure all cargo.



CUSTOMIZATION? BRING IT ON.



SOME GOODS ARE BEST TRANSPORTED BY RAIL. From top to bottom, Ram ProMaster City® is designed to adapt. So when your business is best supported by outside help, hit the roof. Every model in this portfolio comes ready-made for roof carrying capability, with six prepared receivers pre-drilled into the roof structure. Upfit-friendly and ready for any rack, they can accommodate Mopar® and aftermarket roof carrier solutions with the capability

to carry up to 154 lb for everything from ladders to other equipment you need to make a living. By sharing the specs with the best suppliers in the business, you'll also find a surprising range of aftermarket accessories custom-designed for Ram ProMaster City. The finishing touches are the many professional-grade Graphics Packages available to promote your business. Check out MOPAR.COM or see your Ram dealer for more information.



Properly secure all cargo.



DIP
DEALER E-PROCESS

THE IDEAL WORKSPACE FOR ANYTHING YOU HAVE IN MIND.

THINKING OF AN INTERIOR UPFIT? With a cargo volume of 131.7 cubic feet, huge 60/40 split rear doors, nearly vertical side walls and seven feet of flat cargo floor, this is a design that gives you almost unlimited customization capability to more than satisfy your needs.

So take a minute to compare Ram ProMaster City® Cargo Van to, well...reality. The average total volume of a side-by-side fridge/freezer maxes out at 32 cu ft; a typical washer and dryer come in around 48 cu ft, combined. Equate those figures to this 131.7 cu ft

of workable volume: your upfit could take up a small portion of the interior, leaving you ample room for supplies, equipment and even an efficient mobile workshop with generous space left over for storage of tools and materials.

The sliding drawer upfit shown below (ideal for catering as well) extends nearly three feet out, which still gives you an abundant amount of usable cargo area. Finally, while each five-gallon paint can weighs about 50 lb, these five are a mere fraction of the best-in-class^[1] payload of 1,883 lb.



Properly secure all cargo.



Properly secure all cargo.

HUGE ADVANTAGES THAT TOTALLY MEASURE UP. Competitively offering 51.8 inches from floor to ceiling, Ram ProMaster City® Cargo Van also gives you best-in-class^[1] cargo width between the wheel wells—and that counts big.

The photo above says it all: you can install custom shelving over the wheel wells, and still have cavernous room inside—enough for materials, equipment, or even a standard pallet.

PARTITIONS GIVE YOU CONTROL. Choose from three treatments for your Ram ProMaster City Cargo Van interior.

Standard is an open and roomy space, allowing access from the front seat area to the rear. If a closed-off rear space is preferable, choose the solid partition; should you need to monitor your cargo, opt for the partition with fixed window. Both come in available Cargo Partition Packages that include rear wall trim.



OPEN TO CABIN

(Standard for Tradesman® Cargo Van and Tradesman SLT Cargo Van)

PARTITION

(Available for Tradesman Cargo Van and Tradesman SLT Cargo Van)

PARTITION WITH WINDOW

(Available for Tradesman Cargo Van and Tradesman SLT Cargo Van)



LIKE ANY COMPLEX SYSTEM, THE BEAUTY IS IN THE DETAILS.

TOP-LEVEL CARGO MANAGEMENT. Receptacles are already in place for numerous aftermarket accessories—including available Roof Rails from Mopar®. Molded in color with a Silver finish, they carry a 154-lb rating and will accommodate a variety of available assets, including Roof Top Carrier Baskets, Bike Carriers, Ski Carriers and a Roof Top Cargo Net. See them all at mopar.com

TWIN-TUBE MACPHERSON STRUTS are large-diameter (52 mm), easily supporting this best-in-class^[1] GVWR. We also added GVWR-tuned high-performance stamped steel clamshell-sectioned control arms with a steel crossmember, specifically tuned springs, a solid 26-mm-diameter stabilizer bar with cast-iron knuckles and large-sized coil springs.

SLEEK AERODYNAMIC DESIGN. Wind-tunnel tested, Ram ProMaster City® delivers a coefficient of drag (CD) of .30—on par with most and even better than many passenger cars. While this enables an impressively quiet interior, reducing wind resistance acts as a major contributor for the very satisfying fuel efficiency.

2.4L TIGERSHARK® MULTI-AIR® 2 I4. As the only gas-powered 4-cylinder engine in the Ram portfolio, the 2.4L Tigershark takes full advantage of the MultiAir2 valvetrain system developed by FIAT®. Built with a high-pressure die-cast aluminum block, the forged steel crankshaft uses powder-metal forged steel connecting rods with cast-aluminum pistons. Individual oil squirters help keep internal temperatures in the ideal range. The position of the exhaust manifold helps reduce noise into the engine compartment, and pulse-width modulation on the alternator and fuel pump also help achieve overall operating efficiency. The result? Acceleration from zero to 30 mph is a mere 3.7 seconds.



A SOLID BACKBONE was a major mandate for this body-frame integral (unibody) design. This chassis employs a robust, integrated frame structure, strategically boxed frame components, multiple crossrails and phenomenal suspension technology. The results enable capability measured in best-in-class^[1] payload and unsurpassed^[1] towing* on Cargo Van models and incredible weight ratings: best-in-class^[1] GVWR comes in at 5,395 lb, with GCWR delivering a solid and substantial 5,900 lb.

THE HEADLAMP SYSTEM is high-mounted above common crash zones to help mitigate damage (and costs) in the event of a collision. The system includes the **Follow Me Home** function, illuminating the front of the vehicle via the headlamps for a preset time.

RACK AND PINION STEERING WITH FRONT-WHEEL DRIVE shows its advantage in the tight turning radius, a flat-floor cargo area and the easy lift height. This hydraulic-assist system with premium steering gear is engineered and tuned to meet the rigorous demands of the commercial market; curb-to-curb turns are only 42 feet. The adjustable tilt/telescoping steering column is standard.

SEVEN STANDARD AIR BAGS^[4] Few competitive vehicles in the class offer so many. These include dual-stage driver and front-passenger air bags, side air bag inflatable curtains, front seat-mounted thorax air bags, class-exclusive^[1] driver's-side knee air bag, along with dual front seat belt pretensioners and seat belt load limiters.

IN-FLOOR TIE-DOWN RINGS help secure cargo, and are standard on every Ram ProMaster City model (6 rings on Cargo Van models; 4 rings on Wagon models).

PARKVIEW® REAR BACK-UP CAMERA^[5] is an available accessory that displays the rear scene in the optional 5-inch radio display screen. Engaged when in Reverse, on-screen grid lines help when backing up to docks and trailers, or into parking spaces.



THE PARKSENSE® REAR PARK ASSIST SYSTEM^[5] is packaged with the ParkView Rear Back-Up Camera^[5]. It's activated in Reverse, and operates below 5 mph. To alert the driver, audible warnings increase in intensity as the vehicle nears obstructions to the rear.



*When properly equipped.

YOU PUT YOUR BEST INTO IT AND WE TAKE IT SERIOUSLY.

YOU'RE CARRYING CARGO OR PASSENGERS. OR BOTH. IN THIS CITY, SAFETY AND SECURITY ARE PARAMOUNT. Every 2016 Ram ProMaster City model features the comprehensive and advanced version of the Electronic Stability Control (ESC)^[6] System, which integrates the antilock braking system (ABS) with a variety of All-Speed Traction Control technologies that address all four corners of the vehicle in response to lateral movement and the steering input from the driver. ESC^[6] assists in maintaining control under conditions such as wet or snow-covered roads, tight turns and evasive maneuvers to counter the unexpected. Calibrated to engine output, ESC^[6] includes four-channel ABS, Brake/Lock Differential, a full-function All-Speed Traction Control System, Brake Assist, Engine Drag Control, Trailer Sway Control,^[6] Hill Start Assist, Drift Compensation and Electronic Roll Mitigation.



THE CLASS-EXCLUSIVE^[1] NINE-SPEED AUTOMATIC TRANSMISSION.

Featuring Electronic Range Select (ERS), the nine-speed automatic is a major factor in achieving our unsurpassed^[1] highway fuel economy. Considered to be



superior in gear range, ratio spread and gear transitions to many of its six-speed counterparts, it dispenses with conventional large-diameter friction discs in favor of dog clutches. With gear disengagement and actuation similar to a manual, it uses shorter mid-range gears with near-frictionless operation. Factor in the higher 7th, 8th and 9th transitions, and you've got multiple reasons for the exceptional and fuel-efficient performance of Ram ProMaster City models.



THE CLASS-EXCLUSIVE^[1] BI-LINK REAR SUSPENSION

supplies a category-unique independent configuration specifically designed for Ram ProMaster City models. The technology delivers confidence with cargo and passengers, with notable driving comfort and enhanced stability. Here, a steel crossmember with an optimum weight/stiffness ratio helps improve reaction to lateral loads, and contributes to improved

handling. These steel, cargo-rated coil springs supply high-fatigue endurance and work with tough telescopic twin-tube hydraulic shocks designed for minimal mass and maximum performance. A 16-mm solid stabilizer bar with optimized torsional stiffness also enhances durability.



SOME OF OUR FINEST ENGINEERS MAJORED IN INTERIOR DESIGN.

The open and unfettered thinking of the Ram ProMaster City® design team resulted in this versatile, vast and people-friendly interior. Ram ProMaster City Cargo Van and Passenger Wagon models deliver exceptional interior room with generous amenities.

In all ProMaster City models, the driver and front-passenger compartment utilizes durable and easy-to-clean surfaces with user-friendly layout of controls and interfaces. Seating in both models is exemplary; bucket seats with long-lasting fabrics are designed for maximum comfort and long-drive support.

Space and storage are plentiful. Count on ample room for shoulders, hips and long legs in the front seats of all models, with rear seating in Passenger Wagon offering abundant space for up to three passengers (and significant cargo space behind the rear seats), with easy entry and exit through the two oversized side sliding doors.

The quest for quiet was achieved through a full vehicle-length acoustic headliner and a plush floor carpet that stretches from cab to rear cargo area in Wagon. No matter which ProMaster City you're driving, this interior is designed for the utmost convenience and functionality.



GO BEYOND RADIO. A smartphone provides dozens of functions beyond calling. We think your radio should do the same. Ram ProMaster City comes with a standard 3.0 AM/FM radio with four speakers. It features state-of-the-art convenience and offers remarkable capability. From there, the optional **Uconnect® 5.0 system** adds Bluetooth® with Voice Command^[7] and increases screen size to a five-inch color touchscreen unit. Available **Uconnect 5.0 with Navigation** brings to service all of the above, adding GPS Navigation and Points of Interest. From occupation to recreation, staying in touch is often imperative. Welcome to the world of Uconnect—audio and technology at their best.



RADIO 3.0

- AM/FM stereo
- MP3 compatibility with auxiliary input
- Media hub with USB and auxiliary inputs
- Three-inch screen
- Four-speaker sound system



UCONNECT 5.0

- AM/FM stereo
- MP3 compatibility with auxiliary input
- Media hub with USB and auxiliary inputs
- Bluetooth with integrated Voice Command^[7]
- Steering wheel-mounted audio controls
- Five-inch color touchscreen
- Four-speaker sound system



UCONNECT 5.0 WITH NAV

- All features of the Uconnect 5.0 system
- GPS Navigation
- Points-of-Interest (POI) accessibility
- Turn-by-turn navigation





A FAMILY OF VANS AND A GREAT VAN FOR THE FAMILY.



INVITE THE WHOLE FAMILY.

Ram ProMaster City® Wagon points to a revised definition of the ideal vehicle for large families. That huge rear area behind the second-row seats gives you 74.1 cu ft of cargo capacity. Fold the second row, and you've got 101.7 cu ft—all the space you need for a day at the beach or a cross-country trip. And while Ram ProMaster City showcases impressive standard and available Safety and Security features, few things beat your best buddy looking out for you and yours.



THIS CITY EAGERLY WELCOMES ALTERNATIVE TRANSPORTATION.

Our engineers left everything to the imagination and nothing to chance—which is why we raised the roof for greater possibilities in life. Rated up to 154 lb, the lightweight aluminum Roof Rails available from Mopar® (shown above) are just the ticket for handling bikes, extra luggage, sports equipment—and much more. Life with the ProMaster City is all about practicality and capability; no surprise to find that these tough Roof Rails are designed to accommodate dozens of other Authentic Accessories by Mopar to make transport and travel much easier.

Properly secure all cargo. Animals should always be safely and properly secured while vehicle is in motion.





FROM CONCEPT TO CONCRETE, IT JUST FLAT-OUT WORKED.

The Ram ProMaster City® Passenger Wagon brings you smart flexibility in seating and front storage, backed with abundant and accessible rear cargo capacity. Whether your business is to shuttle clients or you're the go-to charter for your neighborhood Little League team, this Wagon is the way to go, with top-of-the-line assets and conveniences.

The Passenger Wagon second row reflects pure practicality and stand-out versatility. The rear seat is engineered for occupant comfort and offers ample room for three passengers. Also key is a **fold-and-tumble design that enables nine different configurations** to accommodate virtually any foreseeable transport needs. Dual side doors slide open,

while the rear doors feature a 60/40 split design with the larger door on the driver's side—a safety feature ideal for curb-side loading.

The **maximum cargo area width (a huge 57.6 inches)** joins long-wearing and useful carpeted floors from fore to aft and a full vehicle-length acoustic headliner designed to keep things quiet. Front and rear leg room are generous. The front bucket seats feature a tubular structure with smart spring seat suspensions for easy in-and-out access; durable fabrics are made to last. Headrests are fully adjustable, seatbacks recline—and you can further opt for manual lumbar support controls for the driver's seat and heated surfaces for both front seats.





CONFIGURES TO CARGO AND YOUR LIFESTYLE.

CALL IT THE LEADER OF THE PACKED. Utilizing a 60/40 split design, the Ram ProMaster City® fold-and-tumble rear seat enables nine formations—exactly the versatility needed by shuttles, taxis, companies and families. Configure the rear seat for three, two, or a single occupant, and load it up. The possibilities are up to your imagination—so think big.

Storage space is equally impressive. A standard overhead front shelf system runs nearly the full length of the roof bow. Angled downward, it measures some five inches high and seven inches deep, accommodating everything from gloves to ice scrapers to notebooks.

The oversized glove box (176.9 cu in) accompanies a large, open 12-inch-wide by 4-inch-deep storage bin; there's also abundant storage

immediately in front of the driver, here designed as concave “trays” that are ideal for holding and stashing valuables and personal devices.

Open storage in the media center teams up with a center console with two cup holders and two 12-volt capped auxiliary power outlets. USB and auxiliary connections are forward of the shifter. Access to power is immediate; recharging capability is smart and intuitive.

Premium available features include Uconnect® Hands-Free Calling,^[7] Navigation and SiriusXM® Satellite Radio^[8] (with a complimentary first year of service). The available ParkView® Rear Back-Up Camera^[5] and ParkSense® Rear Park Assist System^[5] make loading/unloading/hitching much easier.



IMAGINE A PLACE WITH A PLACE FOR EVERYTHING.

Look around. The interiors of all Ram ProMaster City models are designed to provide unexpected and useful places and spaces. Left to right: convenient overhead storage, the in-dash storage bin and oversized glove box, and in-door storage bin with angled bottle carrier.

Properly secure all cargo.





Properly secure all cargo.



READY, WILLING AND ABLE TO ENABLE.

RAM PROMASTER CITY®: WE'RE ALL ABOUT AUTOMOBILITY.

Ram ProMaster City Cargo Van and Passenger Wagon were built with adaptability in mind. No wonder these versatile models are so ideally suited for a wide variety of mobility-minded upfits and personal customization that enable independent travel. The expansive side door openings provide huge, unimpeded access, and the 60/40 rear doors can easily accommodate

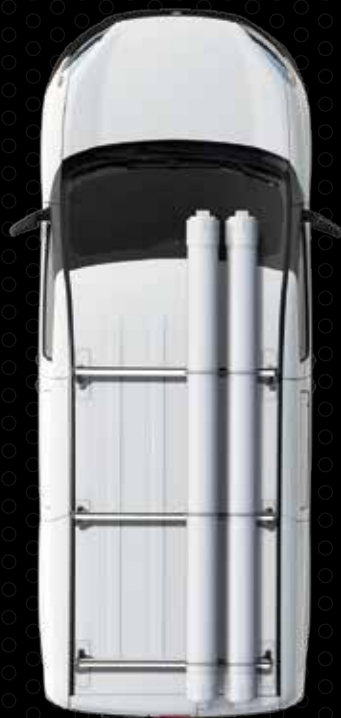
a wheelchair with occupant. With in-floor D-rings on all models (four on Wagon and six on Cargo Van), you've got plenty of anchoring options for both wheelchairs and accessories. The Passenger Wagon adds additional comfort measures—like optional power second-row windows, variable seating dynamics and the quietness of a carpeted cabin throughout.

THIS IS THE SOLUTION THAT WORKS.

Converting a Ram ProMaster City for wheelchair or disabled access is a designed-in advantage. Exemplifying this are two customized solutions. Left, this convenient swing-out front seat uses third-party aftermarket electrohydraulic controls; to the right is one of many examples of how the rear can be adapted. This upfit employs an aftermarket lift for wheelchairs or scooters, and the rear area is large enough to store it after use. It all comes together for all the right reasons: impressive GCWR; huge interior; generous door openings to the side and rear. Ram ProMaster City is built to meet virtually every transport need out there.

Automobility upfit is aftermarket only. Properly secure all cargo.





Removable Roof Rack - Three-Bar Utility (shown with PVC carriers*)



Side Rails Adjustable and Roof-Canoe with Crossbars Mount Carrier†



Side Rails with Adjustable Crossbars and Roof-Mount Ski and Snowboard Carrier†



Side Rails with Adjustable Crossbars and Roof Top Cargo Basket†

AUTHENTIC FINISHING TOUCHES.

MOPAR® HAS CUSTOMIZATION IN MIND. When you design and build a commercial vehicle anticipated to deliver the quality and capability of a Ram ProMaster City,® you devote countless hours to ensure that it will perform over the long run. It's why our engineers worked with our colleagues at Mopar to incorporate dozens of practical ideas and designs to

maximize performance, convenience and safety. Authentic Accessories from Mopar open up a world of vehicle durability and versatility. Discover how Mopar accessories and service can help you and your Ram ProMaster City achieve new levels of productivity and utility. See your Ram dealer or click over to MOPAR.COM



Roadside Safety Kit



Carpet Floor Mats



Cargo-Area Security Cover



Premium Carpet Cargo Mat



Trailer-Tow Wiring Harness



Class IV Hitch Receiver†

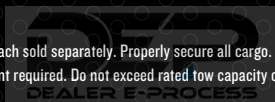


Heavy-Duty Splash Guards

*Not available from Mopar; sold separately.

†Carrier mounts to the Roof Rack Side Rails and Adjustable Crossbars; each sold separately. Properly secure all cargo.

‡Check User Guide for hitch type, load capacity and heavy-duty equipment required. Do not exceed rated tow capacity of the vehicle as equipped. Trailer may require items not supplied by Mopar.



EXTERIOR COLORS



Silver Metallic



Quartz Gray Metallic



Blue Night Metallic



Deep Red Metallic



Bright White



Broom Yellow



Bright Red



Black Metallic

WHEELS



16-inch Steel Wheel painted Silver with Center Cap
(Standard on Tradesman® Cargo Van/Wagon)



16-inch Steel Wheel with full-painted Silver Wheel Cover
(Standard on Tradesman SLT Cargo Van/Wagon SLT)
(Available on Tradesman Cargo Van/Wagon)

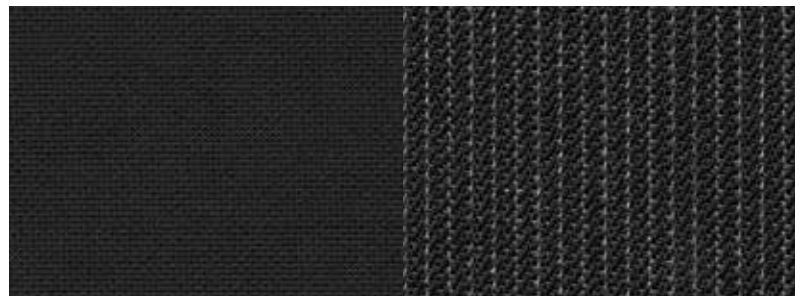


16-inch Aluminum Wheel
(Available on Tradesman SLT Cargo Van/Wagon SLT)

INTERIOR FABRICS



Black Cloth
(Standard on Tradesman Cargo Van/Wagon)



Premium Black Cloth
(Standard on Tradesman SLT Cargo Van/Wagon SLT)

RAMTRUCKS.COM/PROMASTERCITY

DEP
DEALER E-PROCESS

TRADESMAN® CARGO VAN



Two-person seating



MECHANICAL

2.4L MultiAir[®]2 I4 engine • Nine-speed automatic transmission • 16-gallon fuel tank • Front-wheel drive (FWD) • Independent MacPherson strut front suspension • Independent bi-link rear suspension with coil springs, telescopic shock absorbers and stabilizer bar • Electronic Stability Control (ESC)^[6] includes Brake/Lock Differential, Electronic Roll Mitigation, Hill Start Assist, Trailer Sway Control,^[6] Brake Assist and All-Speed Traction Control • Brakes—front vented disc, rear drum

INTERIOR

Air conditioning • Power door locks • Front seats—cloth low-back bucket seats with manual adjust • Tilt/telescoping steering column • Power front windows • 3.0 AM/FM radio with media hub including USB and auxiliary input

EXTERIOR

Black front bumper • Black bodyside molding • Side and rear doors with solid panels • Halogen headlamps • Black mirrors with manual adjust • 16-inch steel wheels painted Silver with center cap

TRADESMAN SLT CARGO VAN



Two-person seating



MECHANICAL

2.4L MultiAir[®]2 I4 engine • Nine-speed automatic transmission • 16-gallon fuel tank • FWD • Independent MacPherson strut front suspension • Independent bi-link rear suspension with coil springs, telescopic shock absorbers and stabilizer bar • ESC^[6] includes Brake/Lock Differential, Electronic Roll Mitigation, Hill Start Assist, Trailer Sway Control,^[6] Brake Assist and All-Speed Traction Control • Brakes—front vented disc, rear drum

INTERIOR

Air conditioning • Power door locks • Front seats—premium cloth bucket seats with manual adjustable lumbar • Tilt/telescoping steering column • Power front windows • Uconnect[®] 5.0 AM/FM system with 5-inch touchscreen display, media hub including USB and auxiliary input, Uconnect with Bluetooth^[7] • Speed control • Leather-wrapped steering wheel with audio controls

EXTERIOR

Body-color front and rear bumpers • Side and rear doors with solid panels • Halogen headlamps • Mirrors with body-color caps; power adjustable, folding and heated • 16-inch steel wheels with full Silver wheel cover

WAGON



Five-person seating



MECHANICAL

2.4L MultiAir[®]2 I4 engine • Nine-speed automatic transmission • 16-gallon fuel tank • FWD • Independent MacPherson strut front suspension • Independent bi-link rear suspension with coil springs, telescopic shock absorbers and stabilizer bar • ESC^[6] includes Brake/Lock Differential, Electronic Roll Mitigation, Hill Start Assist, Trailer Sway Control,^[6] Brake Assist and All-Speed Traction Control • Brakes—front vented disc, rear drum

INTERIOR

Air conditioning • Power door locks • Front seats—cloth low-back bucket seats with manual adjust • Rear seat—60/40 fold-and-tumble 3-passenger bench • Tilt/telescoping steering column • Power front windows • 3.0 AM/FM radio with media hub including USB and auxiliary input • 2nd-row vented windows

EXTERIOR

Black front bumper • Black bodyside molding • Side and rear doors with tinted windows • Halogen headlamps • Black mirrors with manual adjust • 16-inch steel wheels painted Silver with center cap

WAGON SLT



Five-person seating



MECHANICAL

2.4L MultiAir[®]2 I4 engine • Nine-speed automatic transmission • 16-gallon fuel tank • FWD • Independent MacPherson strut front suspension • Independent bi-link rear suspension with coil springs, telescopic shock absorbers and stabilizer bar • ESC^[6] includes Brake/Lock Differential, Electronic Roll Mitigation, Hill Start Assist, Trailer Sway Control,^[6] Brake Assist and All-Speed Traction Control • Brakes—front vented disc, rear drum

INTERIOR

Air conditioning • Power door locks • Front seats—premium cloth bucket seats with manual adjustable lumbar • Rear seat—60/40 fold-and-tumble 3-passenger bench • Tilt/telescoping steering column • Power front windows • Uconnect 5.0 AM/FM system with 5-inch touchscreen display, media hub including USB and auxiliary input, Uconnect with Bluetooth^[7] • Speed control • Leather-wrapped steering wheel with audio controls • 2nd-row vented windows

EXTERIOR

Body-color front and rear bumpers • Side and rear doors with dark-tinted windows • Halogen headlamps • Mirrors with body-color caps; power adjustable, folding and heated • 16-inch steel wheels with full Silver wheel cover

BUYER'S GUIDE

	TRADESMAN CARGO VAN	TRADESMAN SLT CARGO VAN	WAGON	WAGON SLT
ENGINE AND TRANSMISSION				
2.4L MULTIAIR2 I4 / 9-SPEED AUTOMATIC	24C	24D	24A	24B
MECHANICAL FEATURES				
ALTERNATOR — 160-amp	•	•	•	•
BATTERY — 700-amp maintenance-free	•	•	•	•
BRAKES — Four-wheel antilock	•	•	•	•
ELECTRONIC VEHICLE TRACKING SYSTEM (EVTS)	0	0	0	0
FRONT AND REAR STABILIZER BARS	•	•	•	•
FUEL TANK — 16-gallon	•	•	•	•
HEAVY-DUTY SUSPENSION	•	•	•	•
PUNCTURE SEALANT AND PORTABLE AIR COMPRESSOR	•	•	•	•
EXTERIOR FEATURES				
BODYSIDE MOLDING — Black	•	•	•	•
BUMPERS — Front and rear, Black	•	•	•	•
— Body-color				
DAYTIME RUNNING LAMPS	0	0	0	0
DOORS — Rear with 180° opening	•	•	•	•
— Side and rear doors with solid panels	•	•	•	•
— Rear hinged doors with sunscreen glass	0	0		
— Rear and side doors with glass (side doors include vented glass)	0	0	•	•
FOG LAMPS — Front (requires Lights and Wheels Group)	•	P		P
HEADLAMPS — Halogen	•	•	•	•
HEATED WASHER FLUID AND DE-ICER	0	0	0	0
MIRRORS — Manual-adjustable	•	•	•	•
— Power-adjustable/folding/heated with body-color caps				
SPLASH GUARDS	0	0	0	0
THREE-BAR UTILITY ROOF RACK (N/A with roof rack side rails)	0	0	0	0
ROOF RACK CROSSBARS	0	0	0	0
ROOF RACK SIDE RAILS	0	0	0	0
TIRES — 215/55R16XL BSW All-Season	•	•	•	•
WHEELS — 16-inch steel wheels painted Silver with center cap	•	•	•	•
— 16-inch steel wheels painted Black with full-painted Silver wheel covers	0	•	0	•
— 16-inch aluminum wheels (requires Lights and Wheels Group)	0	P		P
INTERIOR FEATURES				
AIR CONDITIONING	•	•	•	•
CARGO AREA LED LIGHTING	0	0		
CARGO SHELVING — Foldable (late availability)	0	0		
— Fixed (late availability)	0	0		
DOOR LOCKS — Power	•	•	•	•
FLOOR MATS — Front carpet	0	0		
— Front and rear carpet	•	•	0	0
— Front slush	0	0		
— Front and rear slush	•	•	0	0
LIGHTING — Map/courtesy/cargo lamps	•	•	•	•
SEATS — Cloth low-back bucket seats with manual adjust	•	•	•	•
— Premium cloth bucket seats with driver-side manual lumbar and height adjusters	•	•	•	•
— 60/40 fold-and-tumble 3-passenger rear bench seat	•	•	•	•
— Heated front seats (included with Popular Equipment Group on SLT models)		P		P

	TRADESMAN CARGO VAN	TRADESMAN SLT CARGO VAN	WAGON	WAGON SLT
INTERIOR FEATURES (CONTINUED)				
SPEED CONTROL	0	•	0	•
STEERING COLUMN — Tilt/telescoping	•	•	•	•
STEERING WHEEL — Luxury	•	•	•	•
— Leather-wrapped (included with Uconnect 5.0 system)	P	•	P	•
WINDOWS — Front, power with one-touch up/down	•	•	•	•
— Second-row power windows (included with Popular Equipment Group)		P		P
— Dark tint (not available with solid panels on the side and rear doors on Cargo Van models)	0	P	0	•
UCONNECT				
BLUETOOTH WIRELESS (requires Uconnect 5.0 system)	0	•	0	•
SIRIUSXM [®] SATELLITE RADIO ^[8] (requires Uconnect 5.0 system)	0	0	0	0
SPEAKERS — Four	•	•	•	•
— Six (packaged with Popular Equipment Group)				P
SYSTEMS — 3.0 AM/FM with media hub including USB and auxiliary input	•	•	•	•
— Uconnect 5.0 AM/FM with 5-inch touchscreen display, media hub including USB and auxiliary input, Uconnect with Bluetooth ^[7]	0	•	0	•
— Uconnect 5.0 AM/FM with 5-inch touchscreen display, media hub including USB and auxiliary input, GPS Navigation, Uconnect with Bluetooth ^[7]	0	0	0	0
MOPAR WEB ^[9]	0	0	0	0
SAFETY AND SECURITY				
AIR BAGS ^[4] — Driver and front-passenger	•	•	•	•
— Driver inflatable knee bolster	•	•	•	•
— Supplemental front-seat side	•	•	•	•
— Supplemental side-curtain for 1st and 2nd row	•	•	•	•
— Supplemental side-curtain for 1st row	•	•	•	•
DOT-APPROVED ROADSIDE SAFETY KIT — Includes DOT fire extinguisher, three reflective triangles, two red vinyl flags and spare fuses	0	0	0	0
ELECTRONIC STABILITY CONTROL (ESC) ^[6] — Includes Brake/Lock Differential, Electronic Roll Mitigation, Hill Start Assist, Trailer Sway Control, ^[6] Brake Assist and All-Speed Traction Control	•	•	•	•
PARKSENSE [®] REAR PARK ASSIST SYSTEM ^[5] (included with Rear Back-Up Camera Group; N/A with 3.0 radio)	P	P	P	P
PARKVIEW [®] REAR BACK-UP CAMERA ^[5] (included with Rear Back-Up Camera Group; N/A with 3.0 radio)	P	P	P	P
REMOTE KEYLESS ENTRY	•	•	•	•
REMOTE START SYSTEM	0	0	0	0
TIRE PRESSURE MONITORING SYSTEM — Warning lamp	•	•	•	•
PACKAGES/EQUIPMENT GROUPS				
CARGO PARTITION PACKAGE — Solid; includes cargo partition with no window and rear wall trim	0	0		
CARGO PARTITION PACKAGE — Window; includes cargo partition with window and rear wall trim	0	0		
LIGHTS AND WHEELS GROUP — Includes front fog lamps and 16-inch aluminum wheels	0	0		0
POPULAR EQUIPMENT GROUP — Includes heated front seats, 2nd-row power window and 6 speakers on Wagon models (requires side sliding door with glass on Cargo Van models)	0	0		0
REAR BACK-UP CAMERA GROUP — Includes ParkView Rear Back-Up Camera ^[5] and ParkSense Rear Park Assist System ^[5] (N/A with 3.0 radio)	0	0	0	0
REAR WIPER/WASHER/DEFROSTER GROUP — Includes rear window defroster and rear window wiper/washer (requires deep-tint sunscreen glass; N/A with side and rear doors with solid panels)	0	0	0	0
TRAILER TOW GROUP — Includes Class III hitch receiver and 7-/4-pin wiring harness	0	0	0	0

• = Standard 0 = Optional P = Part of Package N/A = Not available



SPECIFICATIONS

2.4L TIGERSHARK® MULTIAIR® 2 I4

29 MPG HWY*
178 HORSEPOWER
174 LB-FT OF TORQUE



	2.4L TIGERSHARK MULTIAIR2 I4
HP	178 hp @ 6,400 rpm
TORQUE	174 lb-ft @ 3,800 rpm
CONFIGURATION	In-line four cylinder
DISPLACEMENT	144 cu in / 2360 cc
BORE x STROKE	3.46 x 3.82 in / 88.0 x 97.0 mm
BLOCK MATERIAL	Aluminum
CYLINDER HEAD MATERIAL	Aluminum
AIR INDUCTION	Naturally aspirated
VALVETRAIN	Chain-drive DOHC, I6-valve
FUEL DELIVERY	Sequential, multiport injection
RECOMMENDED FUEL	Unleaded regular (87 octane)
COMPRESSION RATIO	10.0:1
ALTERNATOR	160-amp
OIL CAPACITY	5.5-qt

Mated to the class-exclusive^[1] nine-speed automatic transmission, this in-line four-cylinder powerhouse delivers absolutely top-tier performance. Accompanying the best-in-class^[2] horsepower and torque with standard engine configuration is unsurpassed^[1] towing—up to 2,000 lb[†] (Cargo Van models). You've also got a best-in-class^[1] driving range with standard motor: up to 464 miles[‡] per tank, using wallet-friendly 87-octane regular.

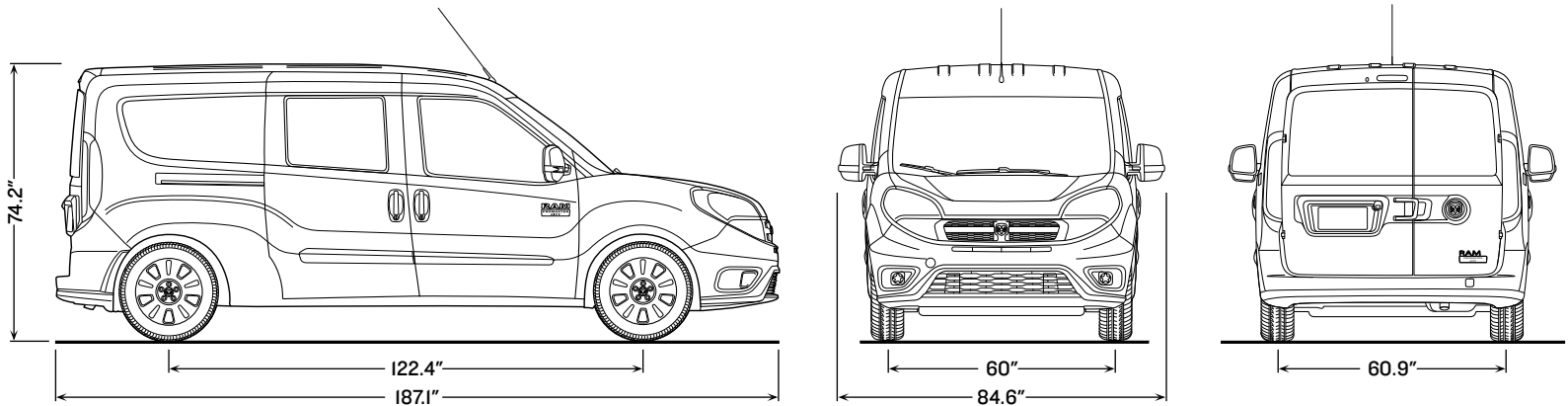


PAYLOAD/TOWING

(maximum payload and towing capacities)

	TRADESMAN® CARGO VAN	TRADESMAN SLT CARGO VAN	WAGON	WAGON SLT
GVWR (lb)	5,395	5,395	5,395	5,395
GCWR (lb)	5,900	5,900	5,900	5,900
CURB WEIGHT (lb)	3,512	3,512	3,682	3,682
MAXIMUM PAYLOAD** (lb)	1,883	1,883	1,713	1,713
MAXIMUM TOWING† (lb)	2,000	2,000	1,867	1,867

Trailer Weight Rating and Tow Vehicle Trailing Weight are calculated as specified in SAE J2807. Driver and passenger weight = 300 lb. Trailer Equipment Weight = 50.7 lb for conventional hitch.



DIMENSIONS

	TRADESMAN CARGO VAN	TRADESMAN SLT CARGO VAN	WAGON	WAGON SLT
CARGO HEIGHT (in)	51.8	51.8	48.7	48.7
CARGO VOLUME (cu ft) (behind 2nd-row seats on Wagon / 2nd-row seats folded on Wagon)	131.7	131.7	74.1 / 101.7	74.1 / 101.7
DOOR OPENING HEIGHT — REAR CARGO (in)	47.4	47.4	46.4	46.4
— SIDE SLIDING (in)	43.6	43.6	42.7	42.7
DOOR OPENING WIDTH — REAR CARGO (in)	48.6	48.6	48.6	48.6
— SIDE SLIDING (in)	25.8	25.8	21.2	21.2
HEAD ROOM — FIRST-ROW (in)	45.8	45.8	45.8	45.8
— SECOND-ROW (in)	—	—	44	44
HEIGHT — OVERALL (in)	74.2	74.2	74.2	74.2
HIP ROOM — FIRST-ROW (in)	52.8	52.8	52.8	52.8
— SECOND-ROW (in)	—	—	59.2	59.2
LEG ROOM — FIRST-ROW (in)	40.8	40.8	40.8	40.8
— SECOND-ROW (in)	—	—	36.8	36.8
LENGTH — LOAD FLOOR (in) (behind 2nd-row seats on Wagon / 2nd-row seats folded on Wagon)	87.2	87.2	54.7 / 69.2	54.7 / 69.2
LENGTH — OVERALL BODY (in)	187.1	187.1	187.1	187.1
REAR LIFT IN HEIGHT (in)	23.3	23.3	23.8	23.8
— SIDE DOOR STEP IN HEIGHT (in)	21.5	21.5	19.3	19.3
WHEELBASE (in)	122.4	122.4	122.4	122.4
WIDTH — BETWEEN WHEEL WELLS (in)	48.4	48.4	48.4	48.4
— MAXIMUM BETWEEN SIDE PANELS (in)	60.4	60.4	57.6	57.6
— VEHICLE WIDTH INCLUDING MIRRORS (in)	84.6	84.6	84.6	84.6

*EPA estimated 21 mpg city / 29 mpg hwy. Actual results may vary. †When properly equipped. ‡EPA estimated 21 mpg city / 29 mpg hwy and 16-gallon fuel tank. Actual results may vary. **Maximum payload based on body model, GVWR class. Specifications subject to change. See dealer for most up-to-date information.



BUSINESS LINK

The fast lane for small business.

THE DEALER NETWORK FOR YOUR BUSINESS.

Your **BusinessLink** dealer is committed to providing you, the small business owner, with the vehicle support you need for your business—from servicing your existing vehicle(s), all makes and models, to selling you that right vehicle needed to perform the work that you do. Your **BusinessLink** dealer provides next-bay-up available service because we know

downtime is costing you money. Your **BusinessLink** dealer has sales professionals trained to properly “job-rate” the right vehicle for your work application along with providing commercial finance options. New vehicle sales to qualified small business owners also receive a free alternate transportation contract, in the event your vehicle is in for service.

Membership in the **BusinessLink** program is complimentary. Membership helps us to identify you as a small business owner so we can provide you with both the service you deserve and update you with offers that can help reduce the cost of doing business. Ask your **BusinessLink** dealer to register today.

BusinessLink has you covered.

- **Next-Bay-Up Service** (all makes and models)
- **A Dedicated BusinessLink Staff**
- **Commercial Vehicles in Stock**
- **Free Loaners* for Selected Vehicles**
- **Extended Service Hours**
- **Convenient Shuttle Services**

For more information, log on to **FCAWORKVEHICLESUS.COM** or call us toll-free at **877-2THELINK (877-284-3546)**.

*Some restrictions apply. See dealer for details.

ON THE JOB**INCENTIVES FOR SMALL BUSINESSES.**

Running a business presents plenty of challenges. Like cutting costs, not corners. Like saving time and money and eliminating hassles. The **ON THE JOB**^[10] commercial incentive program provides assistance in customizing and servicing your business vehicles.

Our most popular **ON THE JOB**^[10] incentives are:

- **COMMERCIAL EQUIPMENT/UPGRADES.** \$500/\$1,000 Allowances for Uprfits.
- **COMMERCIAL GRAPHICS ALLOWANCES.** \$250/\$500/\$1,000 Commercial Graphics Allowances.
- **BOSCH® TOOL OFFER.** Select 1 of 5 Bosch Power Tool Packages.
- **2-YEAR LUBE/OIL/FILTER.** For all Chrysler, Jeep®, Dodge and Ram vehicles (includes gas and diesel engines).
- **MOPAR® SERVICE CONTRACTS.** \$500/\$1,000 and Oil Change options available.

See your dealer for specific program rules and details or call us toll-free at **877-ONTHEJOB (877-668-4356)**.

A commercial line of credit from Chrysler Capital is ideal for qualified business customers looking for a flexible, easy way to manage growing vehicle needs. Chrysler Capital streamlines the process—and with prequalification, you're ready to buy a vehicle when you need it. Ask your **BusinessLink** dealer for details.

CHRYSLER
C A P I T A L**THE RAM OUTFITTER**

Cool signage. Apparel. Electronics. Tools. Sports gear and business items. With your 2016 Ram ProMaster City,® you've got a world of Ram merchandise that's just a click away. It's all at Ram Outfitter.

Treat yourself. Find the perfect gifts for the Ram enthusiast in your life. The Ram's Head identity leaves no doubt about the commercial brand that rules.

**RAMTRUCKS.COM/OUTFITTER**

[1] Based on latest available competitive information. Class is Small Commercial Van segment. [2] Based on latest available competitive information and compared to standard engine configurations. Class is Small Commercial Van segment. [3] Transferable. See your dealer for complete details and a copy of the 5-Year/60,000-Mile Powertrain Limited Warranty. [4] The Advanced Front Air Bags in this vehicle are certified to the new U.S. Federal regulations for advanced air bags. Children 12 years old and younger should always ride buckled up in a rear seat. Infants in rear-facing child restraints should never ride in the front seat of a vehicle with a passenger front air bag. All occupants should always wear their lap and shoulder belts properly. [5] Always look before proceeding, electronic drive aid is not a substitute for conscientious driving; always be aware of your surroundings. [6] No system, no matter how sophisticated, can repeal the laws of physics or overcome careless driving actions. Performance is limited by available traction, which snow, ice and other conditions can affect. When the ESC warning lamp flashes, the driver needs to use less throttle and adapt speed and driving behavior to prevailing road conditions. Always drive carefully, consistent with conditions. Always wear your seat belt. [7] Requires a mobile phone equipped with the Bluetooth Hands-Free Profile. Visit UconnectPhone.com for system and device compatibility. [8] SiriusXM subscriptions for audio and data services are sold by SiriusXM to follow your trial subscription. **If you decide to continue listening after your trial, the subscription plan you choose will automatically renew thereafter and you will be charged according to your chosen payment method at then-current rates.** Fees and taxes apply. To cancel, you must call SiriusXM at 1-866-635-2349. See the SiriusXM Customer Agreement for complete terms and more information at siriusxm.com. All fees and programming subject to change. Your equipment and features for SiriusXM services will vary depending upon the vehicle you select and may be limited in select markets. [9] WiFi subscription required. This feature is not intended for use by the driver while the vehicle is in motion. Always drive carefully. [10] **ON THE JOB** is a retail incentive program; see your dealer for official rules. Inquire about eligibility by calling 877-ONTHEJOB or by logging on to fcaworkvehiclesus.com. The purchaser or lessee must be a qualified commercial customer for more than 30 days prior to the date of the vehicle purchase. An official **ON THE JOB** Customer Acknowledgment Form must be signed by the customer (provided by the dealer).

©2015 FCA US LLC. All Rights Reserved. Chrysler, Dodge, Jeep, Ram, Mopar, BusinessLink and design, On The Job and Design, ParkSense, ParkView, the Ram's Head logo, Ram ProMaster City, Tigershark, Tradesman and Uconnect are registered trademarks of FCA US LLC. Chrysler Capital is a registered trademark of FCA US LLC and licensed to Santander Consumer USA Inc. FIAT is a registered trademark of FCA Group Marketing S.p.A., used under license by FCA US LLC. MultiAir is a registered trademark of C.R.F. Società Consortile per Azioni, used under license by FCA US LLC.

Bluetooth is a registered trademark of Bluetooth SIG, Inc. Sirius, XM and all related marks and logos are trademarks of Sirius XM Radio Inc. Bosch is a registered trademark of Robert Bosch GmbH. Facebook and logo are registered trademarks of Facebook, Inc. The Twitter logo is a service mark of Twitter, Inc. The YouTube logo is a registered trademark of Google Inc. Instagram and logo are registered trademarks of Instagram, Inc. Bontrager is a registered trademark of Trek Bicycle Corporation. Thule is a registered trademark of Thule, Inc. Katerack is a registered trademark of Dejana Truck & Utility Equipment Co. All rights reserved.

About this catalog: Since the time of printing, some of the information you'll find in this catalog may have been updated. Ask your dealer for details. Some of the equipment shown or described throughout this catalog may be available at extra cost. Specifications, descriptions, illustrative materials and all competitive comparisons contained herein are as accurate as known at the time this publication was approved for printing. FCA US LLC reserves the right to discontinue models at any time or change specifications without notice or without incurring obligation. Options may be required in combination with other options. For the price of the model with the equipment you desire, or verification of specifications contained here, see your Ram dealer.



Join our community on Facebook, submit your photos on Instagram, follow us on Twitter and check us out on YouTube.



Join fellow Ram enthusiasts and tell your story by posting comments, participating in discussions and sharing your photos and videos

Ram is a registered trademark of FCA US LLC.



STANDARD
2.4L
TIGERSHARK[®]
MULTIAIR[™] 2 I4
UNSURPASSED[™]
29 MPG HWY*

*EPA estimated 21 mpg city/
 29 mpg hwy. Actual results may vary.

#1
2.4L
TIGERSHARK
MULTIAIR 2 I4
178 HP/174^{LB-F}
174^{LB-F} OF TORQUE
WITH STANDARD
ENGINE CONFIGURATION[™]

#1
1,883-LB
MAX PAYLOAD[™]
CARGO VAN

#1
48.4-INCH
CARGO WIDTH
BETWEEN THE
WHEEL WELLS[™]

RAM
EXCLUSIVE
BI-LINK REAR
SUSPENSION[™]
OUTSTANDING COMFORT,
ENHANCED STABILITY

0-30 MPH
IN 3.7 SEC

#1
131.7^{CU} FT
OF CARGO
CAPACITY[™]
CARGO VAN

UNSURPASSED[™]
2,000-LB
MAX TOWING
CARGO VAN
When properly equipped.

AVAILABLE
5-INCH
UCONNECT[®]
TOUCHSCREEN

CONVENIENT
60/40 SPLIT
REAR DOORS

OIL CHANGE
INTERVALS
UP TO
10,000 MILES

RAM
EXCLUSIVE
NINE-SPEED
AUTOMATIC
TRANSMISSION[™]



RAMTRUCKS.COM/PROMASTERCITY

DEP
 DEALER E-PROCESS