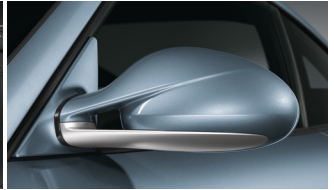




**PORSCHE**



**Exclusive 911**  
Ultimate personalisation



# Contents

<b>Philosophy</b>	<b>6</b>
<b>Exclusive examples</b>	<b>8</b>
<b>Colours and materials</b>	<b>28</b>
<b>Exclusive options</b>	<b>30</b>
<b>Designing your Porsche</b>	<b>52</b>
<b>Service</b>	<b>53</b>
<b>Exclusive expertise</b>	<b>54</b>



911 Carrera S with Aerokit Cup, decorative side logo with model designation, Carrera S Powerkit engine upgrade, wheels painted black

# Philosophy

**Our cars are state of the art.  
And made to measure.**

Exclusivity. Individuality. Craftsmanship. Concepts which have always been associated with Porsche.

Porsche Exclusive stands for the individual personalisation of your vehicle, direct from the factory. The possibilities are as great as your imagination. You tell us what you want and we will do our utmost to give it to you – provided, of course, that it is technically feasible and does not compromise quality.

When customising a car, it is not enough just to use the best available materials. Our overriding principle has always been to make full use of the traditional skills of our craftsmen, carrying out the work by hand. Our specialists have years of experience in the hand crafting of decorative hardwoods, enabling us to bring out the individual character of this superb material.

What about carbon? Light and extremely durable. Expressing all the excitement of the racetrack. Or stainless steel? Very strong, polished and with a chrome finish – pleasing to the eye and extremely resistant to heat and corrosion. Or another truly brilliant possibility: highly-polished anodised aluminium.

Would you like to personalise the interior or exterior of your car, fit an Aerokit or painted wheels? Your wish is our command.



Material composition: leather, carbon, Alcantara and aluminium



## Exclusive examples

**Vehicle: Porsche.**

**Details: Porsche Exclusive.**

A Porsche is more than just a car. It is also an expression of the personal freedom of its driver, and of their very own taste and lifestyle.

Porsche Exclusive offers you a wide range of individual extras so you can personalise your car to your own unique requirements. Straight from the factory. Visual and technical enhancements, for the interior and exterior. And always just as you want them.

The most important extra, though, is time. For it is only by taking the utmost care during the consultancy, planning and processing phases that it is possible to create something really special. Something which is exactly tailor-made to your requirements – down to the finest detail. Something unique. With its own unique character. A Porsche which is as special as its driver.

The following pages will show you five examples of Exclusive personalisations which are sure to inspire you. The captions describe a selection of the Exclusive range shown.

Find out more about how to design your own special Porsche on page 52.



911 Carrera S with Aerokit Cup, decorative side logo with model designation, wheels painted black, headlight cleaning system cover painted



Aerokit Turbo

# 911 Turbo

Meteor Grey Metallic

**Laid back but raring to go.  
And its personalisation is no  
different.**

The exterior is shaped by the Aerokit Turbo, the Chestnut Brown leather interior is complemented by a selection of leather features in Cocoa. A contradiction? You may have thought so. Here, however, high-octane excitement and

peaceful harmony are the perfect match.

Find out more about the equipment details of the 911 Turbo in Meteor Grey Metallic in the current 911 Turbo price list.



PCM package in leather



Air vents from the extended trim package in leather



Information Provided by  
**DEALER**  
E-PROCESS



Aerokit Turbo



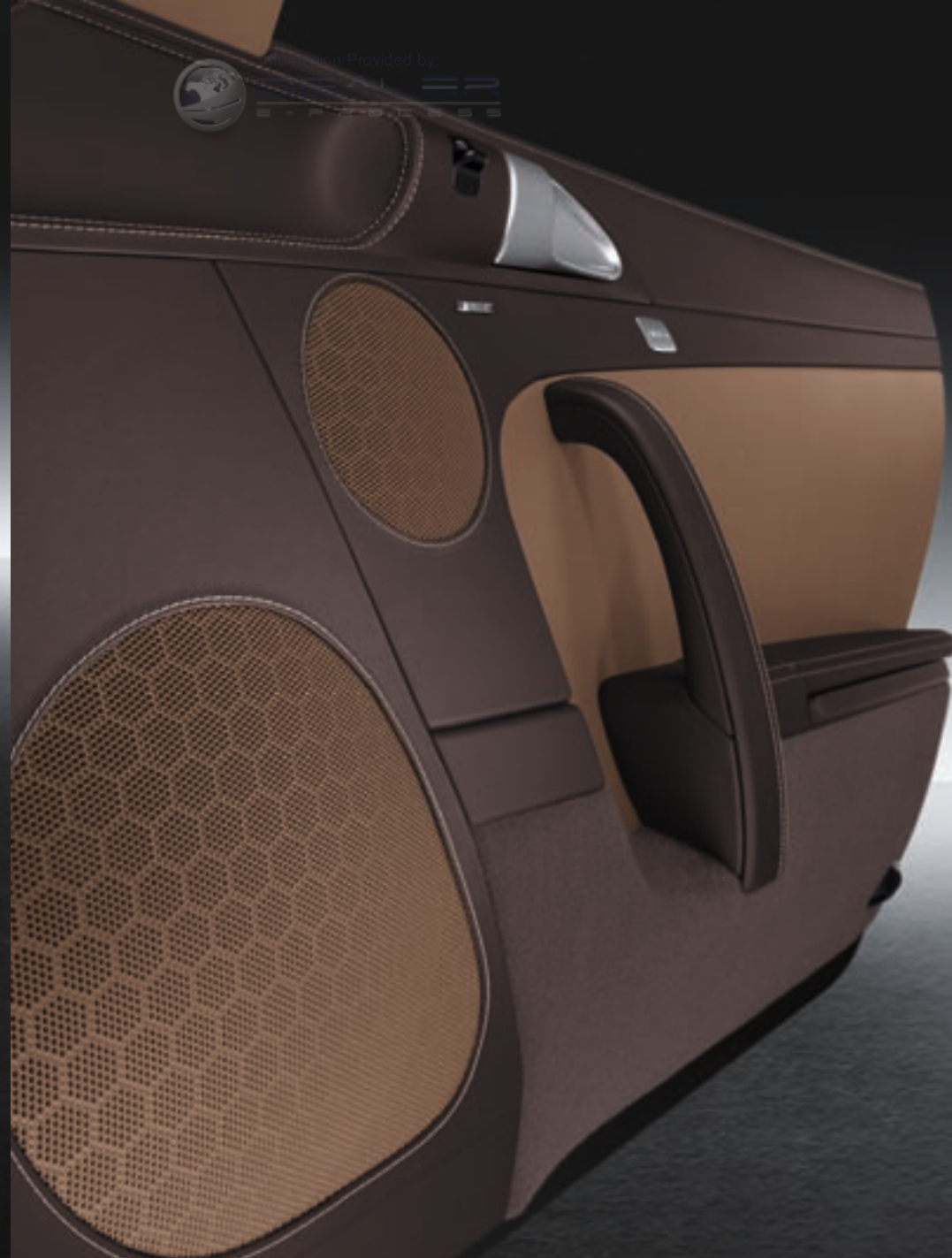
Information Provided by  
FAI ED  
PROCESS

Air vents from the extended trim package in leather, dashboard trim strip in leather, steering column casing in leather, PCM package in leather, PDK gear selector and handbrake lever personalisation package, rear centre console in leather, seat belt buckles in leather, roof lining in leather, sun visors in two-tone leather, interior light trim in leather, interior mirror in leather





Aerokit Turbo



Extended trim package door trims in leather, loudspeaker finishers on doors and at rear in leather





Aerokit Cup, air intake grilles in matt Aluminium Look, decorative side logo with model designation, 19-inch Carrera Sport wheels

# 911 Carrera S

Black

**Some theoreticians reject the notion of black as a colour. But practical thinkers don't.**

The 911. A legend. Shrouded in a mysterious dark cloak. Stylish. Sporty. Black. With the Aerokit Cup. Perfectly complemented by the carbon interior which is further enhanced by Dark Grey natural leather.

Find out more about the equipment details of the 911 Carrera S in Black in the current 911 price list.



Air vents from the extended trim package in carbon



Painted mirror attachment point finisher, exterior mirror lower trims in matt Aluminium Look



Aerokit Cup, air intake grilles in matt Aluminium Look, decorative side logo with model designation, 19-inch Carrera Sport wheels



Extended trim package in carbon, dashboard trim strip in leather, instrument dials and Sport Chrono stopwatch dial in Speed Yellow, door release levers painted, gear lever/selector trim painted, gear selector and handbrake lever in Aluminium I, rear centre console in carbon, seat belts in Speed Yellow



Aerokit Cup, decorative side logo with model designation, 19-inch Carrera Sport wheels, sports tailpipes



Personalised floor mats with leather surround, gear selector and handbrake lever in Aluminium I, rear centre console in carbon, storage compartment lid with logo





SportDesign front apron, decorative side logo with model designation, side skirts painted

# 911 Targa 4S

Meteor Grey Metallic

**Extraordinary design.  
And it's yours.**

The exterior featuring the SportDesign front apron and sports tailpipes. The interior upholstered in Ocean Blue leather with PCM package in Aluminium Look. All in all, another bold

expression of its, and its driver's, inner strength.

Find out more about the equipment details of the 911 Targa 4S in Meteor Grey Metallic in the current 911 price list.



PCM package in Aluminium Look, PDK gear selector and handbrake lever in aluminium



Extended trim package in Aluminium Look, three-spoke multifunction steering wheel in Aluminium Look, PCM package in Aluminium Look, PDK selector and handbrake lever in aluminium



Headlight cleaning system covers, exterior package, wheels, side skirts and mirror attachment point finisher painted in exterior colour

# 911 Carrera 4S Cabriolet

Cream White

**A big moment. The marriage of body and engine. In traditional white, of course.**

A shining example: the 911 Carrera 4S Cabriolet in Cream White with Cocoa leather and partially painted interior. Everything in harmony, nothing short of your expectations. The ultimate in precision.

Find out more about the equipment details of the 911 Carrera 4S Cabriolet in Cream White in the current 911 price list.



Air vent slats, PCM package, gear lever/selector trim, rear centre console and door release levers painted, handbrake lever in Aluminium II



B-pillar seat belt outlet trim painted





Extended trim package in leather, PCM package in leather, PDK gear selector and handbrake lever in aluminium, PDK gear selector gate surround in leather, rear centre console in leather, loudspeaker finishers on doors and at rear in leather

# 911 Turbo S

Ice Blue Metallic

**The 911 Turbo S has it all. Even room for your expectations.**

What more can you want than a 911 Turbo S? For example, the Aerokit Turbo for even more performance. Taillights with a clear glass look for even more style. The PDK selector and handbrake

lever in aluminium for an even more sporty feel.

Find out more about the equipment details of the 911 Turbo S in Ice Blue Metallic in the current 911 Turbo price list.



Inner door sill guards in leather, personalised door sill guards in stainless steel, illuminated



Aerokit Turbo, air intake grilles in matt Aluminium Look

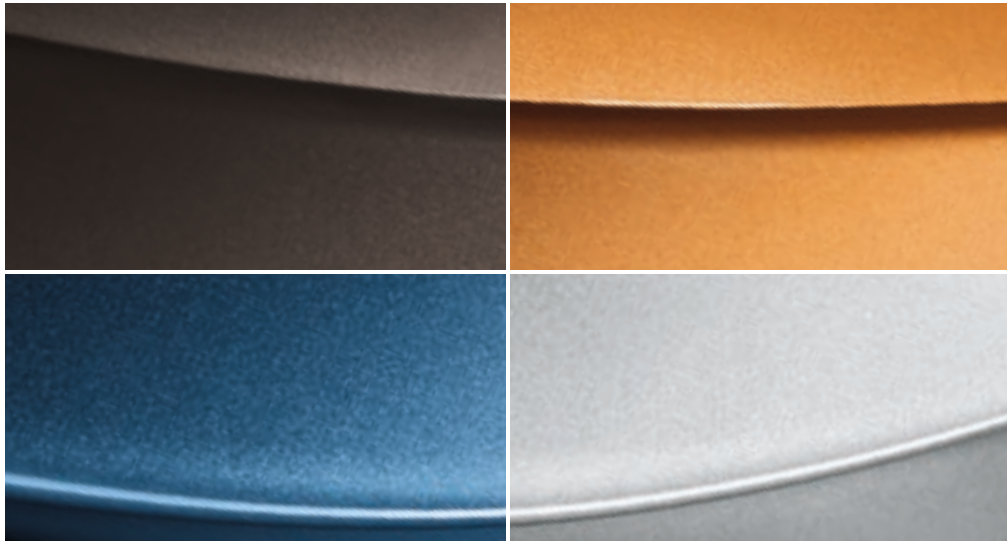


# Colours and materials

**Exceptional, extravagant, exquisite, excellent, exact.**

**In a word: Exclusive.**

We can offer an exclusive range of colours and materials for you to choose from when designing your new Porsche – both inside and outside. Individual colours for the interior and exterior and also high-quality materials such as leather, Alcantara, fine macassar wood<sup>1)</sup>, carbon, aluminium and stainless steel to enhance the interior. You can find out what is possible at your Porsche Centre. Or contact the Porsche Exclusive Customer Centre in Zuffenhausen directly for an individual consultation (see page 52).



Selection of individual colours: Marrone Metallic, Nordic Gold Metallic, Azurro California Metallic, Polar Silver Metallic

<sup>1)</sup> Since wood is a natural product, there may be variations in colour and grain.

## Leather

Leather is a traditional natural material – a true classic. Items made of leather are both timeless and hardwearing.



## Alcantara

This high-quality material is easy to care for, washable and has excellent non-slip properties.



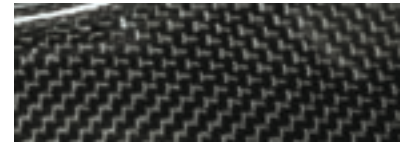
## Macassar wood<sup>1)</sup>

Macassar ebony is dark and distinctive with a modern, elegant look. The deep black heartwood has reddish-brown lines and a dramatic, marble-like texture.



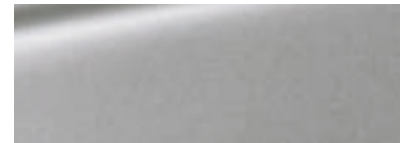
## Carbon

Carbon fibre is a light yet highly robust material used extensively in motorsport. Its distinctive look perfectly complements the car's race-bred engineering.



## Aluminium

Use this stylish metal or our special Aluminium Look finish to create striking interior highlights that evoke the purity of race car design.



## Stainless steel

Stainless steel is an especially pure material, and it looks absolutely first class.





SportDesign front apron



Air intake grilles in matt Aluminium Look



Taillights with clear glass look

## Exclusive options

### Exterior.

Option	911 Carrera	911 Carrera S	911 Carrera 4	911 Carrera 4S	911 Carrera Cabriolet	911 Carrera S Cabriolet	911 Carrera 4 Cabriolet	911 Carrera 4S Cabriolet	911 Targa 4	911 Targa 4S	911 Turbo	911 Turbo S	911 Turbo Cabriolet	911 Turbo S Cabriolet	911 GT2 RS	911 GT3	911 GT3 RS	I no.	Page
• Aerokit Cup	○	○	○	○	○	○	○	○	○	○	○	○	○	○	○	○	○	XAA	5, 9, 16
• Aerokit Turbo	—	—	—	—	—	—	—	—	—	—	○	○	—	—	—	—	—	XAF	10, 11
• SportDesign front apron	○	○	○	○	○	○	○	○	○	○	—	—	—	—	—	—	—	XAS	22, 30
• Side skirts painted <sup>1)</sup>	—	—	○	○	—	—	○	○	○	○	○	○	○	○	—	—	—	XAJ	22, 24
• Exterior mirror lower trims in matt Aluminium Look	○	○	○	○	○	○	○	○	○	○	○	○	○	○	—	—	—	XUZ	16
• Mirror attachment point finisher painted <sup>1)</sup>	○	○	○	○	○	○	○	○	○	○	○	○	○	○	—	○	○	CMA	16, 24
• Exterior package painted <sup>1), 2)</sup>	○	○	○	○	○	○	○	○	○	○	○	○	○	○	—	—	—		24
• Spoiler lip painted <sup>1)</sup>	—	—	—	—	—	—	—	—	—	—	○	○	○	○	—	—	—	XUA	—
• Side skid plate (front) painted <sup>1)</sup>	○	○	○	○	○	○	○	○	○	○	—	—	—	—	—	—	—	CAA	24
• Side skid plate (rear) painted <sup>1)</sup>	—	—	○	○	—	—	○	○	—	—	—	—	—	—	—	—	—	CAB	—

— not available ○ I number/extra-cost option • standard equipment W no-cost option  
More detailed information on individual equipment and equipment packages can be found in the current vehicle price list.

### Exterior.

Option	911 Carrera	911 Carrera S	911 Carrera 4	911 Carrera 4S	911 Carrera Cabriolet	911 Carrera S Cabriolet	911 Carrera 4 Cabriolet	911 Carrera 4S Cabriolet	911 Targa 4	911 Targa 4S	911 Turbo	911 Turbo S	911 Turbo Cabriolet	911 Turbo S Cabriolet	911 GT2 RS	911 GT3	911 GT3 RS	I no.	Page
• Rear undertray painted <sup>1)</sup>	—	—	—	—	—	—	—	—	—	—	○	○	○	○	—	—	—	XUE	—
• Air intake grilles painted <sup>1)</sup>	○	○	○	○	○	○	○	○	○	○	○	○	○	○	—	—	—	CNF	24
• Air intake grilles in matt Aluminium Look	○	○	○	○	○	○	○	○	○	○	○	○	○	○	—	—	—	CNC	17, 31
• Headlight cleaning system covers painted <sup>1)</sup>	○	○	○	○	○	○	○	○	○	○	○	○	○	○	○	○	○	XUB	9, 24
• Taillights with clear glass look	○	○	○	○	○	○	○	○	○	○	○	○	○	○	○	○	○	XXG	31
• Decorative side logo with model designation	○	○	○	○	○	○	○	○	○	○	○	○	○	○	—	—	—	CMX	16, 22
• Side skirts painted <sup>1)</sup>	○	○	○	○	○	○	○	○	○	○	○	○	○	○	○	○	○	XUC	—
• Fuel filler cap with Aluminium Look finish <sup>4)</sup>	○	○	○	○	○	○	○	○	○	○	○	○	○	○	○	○	○	XYB	—

<sup>1)</sup> Paint in exterior colour.

<sup>2)</sup> Please refer to the current price list for your specific vehicle for details and part numbers.

<sup>3)</sup> Available from 08/2010 at the earliest.

<sup>4)</sup> Available from 07/2010 at the earliest.



Sports tailpipes



Carrera S Powerkit



Wheels painted in different exterior colour (black)

## Engine, transmission and chassis.

Option	911 Carrera	911 Carrera S	911 Carrera 4	911 Carrera 4S	911 Carrera Cabriolet	911 Carrera S Cabriolet	911 Carrera 4 Cabriolet	911 Carrera 4S Cabriolet	911 Targa 4	911 Targa 4S	911 Turbo	911 Turbo S	911 Turbo Cabriolet	911 Turbo S Cabriolet	911 GT2 RS	911 GT3	911 GT3 RS	I no.	Page
• Carrera S Powerkit engine upgrade to 300 kW (408 hp) with sports exhaust system (I no. 176) and specially designed twin tailpipes	–	○	–	–	–	–	–	–	–	–	–	–	–	–	–	–	–	X51	5, 33
• Sports tailpipes	○	○	○	○	○	○	○	○	○	○	–	–	–	–	–	–	–	XLT	20, 32
• Short shifter	○	○	○	○	○	○	○	○	○	○	–	–	–	–	–	–	–	XCZ	–
• 19-inch Carrera Sport wheels <sup>1)</sup>	○	○	○	○	○	○	○	○	○	○	–	–	–	–	–	–	–	XRR	16
• Wheel spacers on front and rear axle, 5-mm	○	○	○	○	○	○	○	○	○	○	–	–	–	–	–	–	–	XRP	–

– not available ○ I number/extra-cost option • standard equipment W no-cost option  
More detailed information on individual equipment and equipment packages can be found in the current vehicle price list.

## Wheels.

Option	911 Carrera	911 Carrera S	911 Carrera 4	911 Carrera 4S	911 Carrera Cabriolet	911 Carrera S Cabriolet	911 Carrera 4 Cabriolet	911 Carrera 4S Cabriolet	911 Targa 4	911 Targa 4S	911 Turbo	911 Turbo S	911 Turbo Cabriolet	911 Turbo S Cabriolet	911 GT2 RS	911 GT3	911 GT3 RS	I no.	Page
• Wheels painted in exterior colour	○	○	○	○	○	○	○	○	○	○	○	○	○	○	○	○	○	XD9	24
• Wheels painted in different exterior colour																			
Black	○	○	○	○	○	○	○	○	○	○	○	○	○	○	○	○	○	XDA	5, 9, 33
Basalt Black Metallic	○	○	○	○	○	○	○	○	○	○	○	○	○	○	○	○	○	XDB	–
Speed Yellow	○	○	○	○	○	○	○	○	○	○	○	○	○	○	○	○	○	XDC	–
Carrara White	○	○	○	○	○	○	○	○	○	○	○	○	○	○	○	○	○	XDD	–
Guards Red	○	○	○	○	○	○	○	○	○	○	○	○	○	○	○	○	○	XDE	–
Other standard and special colours	○	○	○	○	○	○	○	○	○	○	○	○	○	○	○	○	○	CRX	–

<sup>1)</sup> Includes wheel centres with full-colour Porsche Crest.





Interior painted, instrument dials in black



Air vent slats painted



Door trim package painted

## Interior.

Option	911 Carrera	911 Carrera S	911 Carrera 4	911 Carrera 4S	911 Carrera Cabriolet	911 Carrera S Cabriolet	911 Carrera 4 Cabriolet	911 Carrera 4S Cabriolet	911 Targa 4	911 Targa 4S	911 Turbo	911 Turbo S	911 Turbo Cabriolet	911 Turbo S Cabriolet	911 GT2 RS	911 GT3	911 GT3 RS	I no.	Page
• Dashboard trim package painted <sup>1)</sup>	○	○	○	○	○	○	○	○	○	○	○	○	○	○	○	○	○	CDG	–
• Door trim package painted <sup>1)</sup>	○	○	○	○	○	○	○	○	○	○	○	○	○	○	○	○	○	CDH	35
• Door release lever panels painted <sup>1)</sup>	–	–	–	–	–	–	–	–	–	–	–	–	–	–	–	–	–	CET	–
• Door release levers painted <sup>1)</sup>	○	○	○	○	○	○	○	○	○	○	○	○	○	○	○	○	○	CMC	18, 25
• Instrument cluster surround painted <sup>1)</sup>	○	○	○	○	○	○	○	○	○	○	○	○	○	○	○	○	○	XDP	–
• Dashboard trim strip painted <sup>1)</sup>	○	○	○	○	○	○	○	○	○	○	○	○	○	○	○	○	○	XDM	–
• Air vent slats painted <sup>1)</sup>	○	○	○	○	○	○	○	○	○	○	○	○	○	○	○	○	○	CDN	35, 44
• PDK gear selector gate surround painted <sup>1)</sup>	○	○	○	○	○	○	○	○	○	○	○	○	○	○	○	○	○	XWS	–

– not available ○ I number/extra-cost option ● standard equipment W no-cost option  
More detailed information on individual equipment and equipment packages can be found in the current vehicle price list.

## Interior.

Option	911 Carrera	911 Carrera S	911 Carrera 4	911 Carrera 4S	911 Carrera Cabriolet	911 Carrera S Cabriolet	911 Carrera 4 Cabriolet	911 Carrera 4S Cabriolet	911 Targa 4	911 Targa 4S	911 Turbo	911 Turbo S	911 Turbo Cabriolet	911 Turbo S Cabriolet	911 GT2 RS	911 GT3	911 GT3 RS	I no.	Page
• Instrument dials in																			
Black	●	W	●	W	●	W	●	W	●	W	–	–	–	–	–	–	–	022	34
Sand Beige	○	○	○	○	○	○	○	○	○	○	○	○ <sup>2)</sup>	○	○ <sup>2)</sup>	–	–	–	XFD	–
Guards Red	○	○	○	○	○	○	○	○	○	○	○	○ <sup>2)</sup>	○	○ <sup>2)</sup>	–	○	○	XFG	44
Speed Yellow	○	○	○	○	○	○	○	○	○	○	○	○ <sup>2)</sup>	○	○ <sup>2)</sup>	–	○	○	XFH	18
Carrara White	○	○	○	○	○	○	○	○	○	○	○	○ <sup>2)</sup>	○	○ <sup>2)</sup>	–	○	○	XFJ	–
• Sport Chrono dial painted																			
Sand Beige	○	○	○	○	○	○	○	○	○	○	○	○	○	○	○	○	○	CGD	–
Guards Red	○	○	○	○	○	○	○	○	○	○	○	○	○	○	○	○	○	CGG	44
Speed Yellow	○	○	○	○	○	○	○	○	○	○	○	○	○	○	○	○	○	CGH	18
Carrara White	○	○	○	○	○	○	○	○	○	○	○	○	○	○	○	○	○	CGJ	–

<sup>1)</sup> Paint in exterior colour. This option is also available in black paint, independent of the exterior colour (different order number). Please refer to the current price list for your specific vehicle for details and part numbers.

<sup>2)</sup> Available from 08/2010 at the earliest.



Sports seat backrests painted, loudspeaker finishers on doors and at rear in leather



Sports bucket seat belt passages painted



Full-colour Porsche logo on wind deflector



Rear footwell lighting

## Interior.

Option	911 Carrera	911 Carrera S	911 Carrera 4	911 Carrera 4S	911 Carrera Cabriolet	911 Carrera S Cabriolet	911 Carrera 4 Cabriolet	911 Carrera 4S Cabriolet	911 Targa 4	911 Targa 4S	911 Turbo	911 Turbo S	911 Turbo Cabriolet	911 Turbo S Cabriolet	911 GT2 RS	911 GT3	911 GT3 RS	I no.	Page
• PCM package painted <sup>1)</sup>	○	○	○	○	○	○	○	○	○	○	○	○	○	○	○	○	○	CUF	25, 34
• Gear lever/selector trim painted <sup>1)</sup>	○	○	○	○	○	○	○	○	○	○	○	○	○	○	○	○	○	XDJ	18, 25, 44
• Rear centre console painted <sup>1)</sup>	○	○	○	○	○	○	○	○	○	○	○	○	○	○	○	○	○	XME	25
• Rear centre console painted in different exterior colour	○	○	○	○	○	○	○	○	○	○	○	○	○	○	○	○	○	CME	–
• B-pillar seat belt outlet trim painted <sup>1)</sup>	○	○	○	○	○	○	○	○	○	○	○	○	○	○	○	○	○	XDR	25
• Sports seat backrests painted <sup>2)</sup>	○	○	○	○	○	○	○	○	○	○	○	○	○	○	○	○	○	XSA	36
• Sports bucket seat belt passages painted <sup>1)</sup>	○	○	○	○	○	○	○	○	○	○	○	○	○	○	○	○	○	CMT	36

– not available ○ I number/extra-cost option • standard equipment W no-cost option  
More detailed information on individual equipment and equipment packages can be found in the current vehicle price list.

## Interior.

Option	911 Carrera	911 Carrera S	911 Carrera 4	911 Carrera 4S	911 Carrera Cabriolet	911 Carrera S Cabriolet	911 Carrera 4 Cabriolet	911 Carrera 4S Cabriolet	911 Targa 4	911 Targa 4S	911 Turbo	911 Turbo S	911 Turbo Cabriolet	911 Turbo S Cabriolet	911 GT2 RS	911 GT3	911 GT3 RS	I no.	Page
• Seat belts in:																			
• Silver Grey	○	○	○	○	○	○	○	○	○	○	○	○	○	○	○	○	○	XSH	–
• Sand Beige	○	○	○	○	○	○	○	○	○	○	○	○	○	○	○	○	○	XST	–
• Guards Red	○	○	○	○	○	○	○	○	○	○	○	○	○	○	○	○	○	XSX	–
• Speed Yellow	○	○	○	○	○	○	○	○	○	○	○	○	○	○	○	○	○	XSY	18
• Full-colour Porsche logo on wind deflector	–	–	–	–	○	○	○	○	○	○	○	○	○	○	○	○	○	CUL	37
• Rear footwell lighting	○	○	○	○	○	○	○	○	○	○	○	○	○	○	○	○	○	CEE	37
• Door storage compartment lighting	○	○	○	○	○	○	○	○	○	○	○	○	○	○	○	○	○	CEF	–

<sup>1)</sup> Paint in exterior colour. This option is also available in black paint, independent of the exterior colour. (different order number). Please refer to the current price list for your specific vehicle for details and part numbers.

<sup>2)</sup> Paint in exterior colour.



Extended trim package in leather, PCM package in leather



Instrument cluster surround in leather



Windscreen defroster panel and vents in leather

### Interior: leather and natural leather.

Option	911 Carrera	911 Carrera S	911 Carrera 4	911 Carrera 4S	911 Carrera Cabriolet	911 Carrera S Cabriolet	911 Carrera 4 Cabriolet	911 Carrera 4S Cabriolet	911 Targa 4	911 Targa 4S	911 Turbo	911 Turbo S	911 Turbo Cabriolet	911 Turbo S Cabriolet	911 GT2 RS	911 GT3	911 GT3 RS	I no.	Page
• Extended trim package in leather	○	○	○	○	○	○	○	○	○	○	○	○	○	○	–	○	–	EAF	12, 26, 38
• Extended trim package door trims in leather	○	○	○	○	○	○	○	○	○	○	○	○	○	○	–	○	–	XTV	15
• Loudspeaker finishers on doors and at rear in leather	○	○	○	○	○	○	○	○	○	○	○	○	○	○	–	○	–	XVT	15, 26, 36
• Instrument cluster surround in leather	○	○	○	○	○	○	○	○	○	○	○	○	○	○	–	○	–	XNG	39

### Interior: leather and natural leather.

Option	911 Carrera	911 Carrera S	911 Carrera 4	911 Carrera 4S	911 Carrera Cabriolet	911 Carrera S Cabriolet	911 Carrera 4 Cabriolet	911 Carrera 4S Cabriolet	911 Targa 4	911 Targa 4S	911 Turbo	911 Turbo S	911 Turbo Cabriolet	911 Turbo S Cabriolet	911 GT2 RS	911 GT3	911 GT3 RS	I no.	Page
• Steering column casing in leather	○	○	○	○	○	○	○	○	○	○	○	○	○	○	○	○	○	XNS	12, 26
• Windscreen defroster panel in leather	○	○	○	○	○	○	○	○	○	○	○	○	○	○	○	○	○	XV1	39
• Windscreen defroster vents in leather	○	○	○	○	○	○	○	○	○	○	○	○	○	○	○	○	○	CNB	39
• PCM package in leather	○	○	○	○	○	○	○	○	○	○	○	○	○	○	○	○	○	CUR	10, 38

– not available ○ I number/extra-cost option ● standard equipment W no-cost option  
 More detailed information on individual equipment and equipment packages can be found in the current vehicle price list.





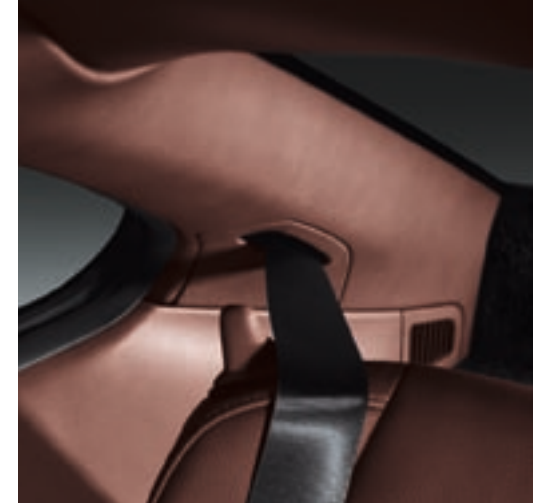
Interior light surround, rear-view mirror and roof lining in leather, sun visors in two-tone leather



Interior package (A-pillar) in leather



Interior package (B-pillar) in leather



Interior package (C-pillar) in leather

## Interior: leather and natural leather.

Option	911 Carrera	911 Carrera S	911 Carrera 4	911 Carrera 4S	911 Carrera Cabriolet	911 Carrera S Cabriolet	911 Carrera 4 Cabriolet	911 Carrera 4S Cabriolet	911 Targa 4	911 Targa 4S	911 Turbo	911 Turbo S	911 Turbo Cabriolet	911 Turbo S Cabriolet	911 GT2 RS	911 GT3	911 GT3 RS	I no.	Page
• Interior package (A-pillar) in leather	o	o	o	o	o	o	o	o	o	o	o	o	o	o	o	o	o	EAK	40
• Interior package (B-pillar) in leather	o	o	o	o	o	o	o	o	o	o	o	o	o	o	o	o	o	DAB	41
• Interior package (C-pillar) in leather	o	o	o	o	o	o	o	o	o	o	o	o	o	o	o	o	o	DAC	41
• Roof lining in leather	o	o	o	o	o	o	o	o	o	o	o	o	o	o	o	o	o	XMA	12, 40
• Sun visors in leather	o	o	o	o	o	o	o	o	o	o	o	o	o	o	o	o	o	XMP	–
• Sun visors in leather, two-tone	o	o	o	o	o	o	o	o	o	o	o	o	o	o	o	o	o	CVV	12, 40

– not available o I number/extra-cost option • standard equipment W no-cost option  
More detailed information on individual equipment and equipment packages can be found in the current vehicle price list.

## Interior: leather and natural leather.

Option	911 Carrera	911 Carrera S	911 Carrera 4	911 Carrera 4S	911 Carrera Cabriolet	911 Carrera S Cabriolet	911 Carrera 4 Cabriolet	911 Carrera 4S Cabriolet	911 Targa 4	911 Targa 4S	911 Turbo	911 Turbo S	911 Turbo Cabriolet	911 Turbo S Cabriolet	911 GT2 RS	911 GT3	911 GT3 RS	I no.	Page
• Interior light surround in leather	o	o	o	o	o	o	o	o	o	o	o	o	o	o	o	o	o	XZD	12, 40
• Rear-view mirror in leather	o	o	o	o	o	o	o	o	o	o	o	o	o	o	o	o	o	XVW	12, 40
• Dashboard trim strip in leather	o	o	o	o	o	o	o	o	o	o	o	o	o	o	o	o	o	XVP	12
• Gear lever trim in leather	o	o	o	o	o	o	o	o	o	o	o	o	o	o	o	o	o	XDZ	–
• PDK gear selector gate surround in leather	o	o	o	o	o	o	o	o	o	o	o	o	o	o	o	o	o	XWU	26, 42



PDK gear selector gate surround in leather



Storage compartment lid with logo



Sports seat backrests and clothes hooks on seat backrests in leather



Personalised floor mats with leather surround

## Interior: leather and natural leather.

Option	911 Carrera	911 Carrera S	911 Carrera 4	911 Carrera 4S	911 Carrera Cabriolet	911 Carrera S Cabriolet	911 Carrera 4 Cabriolet	911 Carrera 4S Cabriolet	911 Targa 4	911 Targa 4S	911 Turbo	911 Turbo S	911 Turbo Cabriolet	911 Turbo S Cabriolet	911 GT2 RS	911 GT3	911 GT3 RS	I no.	Page
• Rear centre console in leather	o	o	o	o	o	o	o	o	o	o	o	o	o	o	o	o	o	XMZ	12, 26
• Storage compartment lid with Porsche Crest	o	o	o	o	o	o	o	o	o	o	o	o	o	o	-	-	-	XPT	-
• Storage compartment lid with logo	o	o	o	o	o	o	o	o	o	o	o <sup>1)</sup>	o <sup>1)</sup>	-	-	-	-	-	XUV	21, 42
• Sports seat backrests in leather	o	o	o	o	o	o	o	o	o	o	o	o	o	o	-	-	-	XSB	43
• Clothes hooks on seat backrests in leather	o	o	o	o	o	o	o	o	o	o	o	o	o	o	-	-	-	XVY	43
• Porsche Crest embossed on headrests	o	o	o	o	o	o	o	o	o	o	o	o	o	o	o	o	o	XSC	-
• Seat belt buckles in leather	o	o	o	o	o	o	o	o	o	o	o	o	o	o	-	-	-	CDT	12, 25
• B-pillar seat belt outlet trim in leather	o	o	o	o	o	o	o	o	o	o	o	o	o	o	-	-	-	XDU	41

- not available o I number/extra-cost option • standard equipment W no-cost option  
More detailed information on individual equipment and equipment packages can be found in the current vehicle price list.

## Interior: leather and natural leather.

Option	911 Carrera	911 Carrera S	911 Carrera 4	911 Carrera 4S	911 Carrera Cabriolet	911 Carrera S Cabriolet	911 Carrera 4 Cabriolet	911 Carrera 4S Cabriolet	911 Targa 4	911 Targa 4S	911 Turbo	911 Turbo S	911 Turbo Cabriolet	911 Turbo S Cabriolet	911 GT2 RS	911 GT3	911 GT3 RS	I no.	Page
• Rear seat backrest lever in leather	o	o	o	o	o	o	o	o	o	o	o	o	o	o	-	-	-	XUX	41
• Luggage stop on rear seat backrest in leather	o	o	o	o	-	-	-	o	o	o	o	o	-	-	-	-	-	CVD	-
• BOSE® Subwoofer outputs in leather	o	o	o	o	-	-	-	-	-	-	o	o	-	-	-	-	-	CVZ	-
• Fuse box cover in leather	o	o	o	o	o	o	o	o	o	o	o	o	o	o	-	-	-	CUJ	-
• Inner door sill guards in leather	o	o	o	o	o	o	o	o	o	o	o	o	o	o	-	-	-	XTG	27
• Floor mats with leather surround	o	o	o	o	o	o	o	o	o	o	o	o	o	o	-	o	o	CJX	-
• Personalised floor mats with leather surround	o	o	o	o	o	o	o	o	o	o	o	o	o	o	o	o	o	CFX	21, 43
• Key pouch in leather	o	o	o	o	o	o	o	o	o	o	o	o	o	o	-	o	o	CPU	-

<sup>1)</sup> Available from 08/2010 at the earliest.



Interior in Alcantara, air vent slats painted, instrument dials and Sport Chrono stopwatch dial in Guards Red, gear lever/selector trim painted



Storage compartment lid in Alcantara with Porsche logo



B-pillar seat belt outlet trim in macassar wood

### Interior: Alcantara.

Option	911 Carrera	911 Carrera S	911 Carrera 4	911 Carrera 4S	911 Carrera Cabriolet	911 Carrera S Cabriolet	911 Carrera 4 Cabriolet	911 Carrera 4S Cabriolet	911 Targa 4	911 Targa 4S	911 Turbo	911 Turbo S	911 Turbo Cabriolet	911 Turbo S Cabriolet	911 GT2 RS	911 GT3	911 GT3 RS	I no.	Page
• Steering wheel in Alcantara, padded	o	o	o	o	o	o	o	o	o	o	o	o	o	o	o	o	o	CLA	44
• Steering wheel in black/red Alcantara, padded	-	-	-	-	-	-	-	-	-	-	-	-	-	o	-	-	-	CLV	-
• Dashboard trim strip in Alcantara	o	o	o	o	o	o	o	o	o	o	o	o	o	-	-	-	-	CLE	44
• Gear and handbrake levers in Alcantara	o	o	o	o	o	o	o	o	o	o	o	o	o	-	-	-	-	DAT	44
• PDK gear selector and handbrake lever in Alcantara	o	o	o	o	o	o	o	o	o	o	o	o	o	-	-	-	-	DAP	-
• Storage compartment lid in Alcantara with Porsche logo	o	o	o	o	o	o	o	o	o	o	o	o	o	o	o	o	o	XLG	45
• Storage compartment lid in Alcantara with Porsche logo, red	-	-	-	-	-	-	-	-	-	-	-	-	-	o	-	-	-	CLG	-
• Sun visors in Alcantara	-	-	-	-	-	-	-	-	-	-	-	-	-	-	o	o	-	CYW	-

- not available o I number/extra-cost option • standard equipment W no-cost option  
More detailed information on individual equipment and equipment packages can be found in the current vehicle price list.

### Interior: macassar wood, carbon, Aluminium Look.

Option	911 Carrera	911 Carrera S	911 Carrera 4	911 Carrera 4S	911 Carrera Cabriolet	911 Carrera S Cabriolet	911 Carrera 4 Cabriolet	911 Carrera 4S Cabriolet	911 Targa 4	911 Targa 4S	911 Turbo	911 Turbo S	911 Turbo Cabriolet	911 Turbo S Cabriolet	911 GT2 RS	911 GT3	911 GT3 RS	I no.	Page
• Extended trim package <sup>1)</sup>	o	o	o	o	o	o	o	o	o	o	o	o	o	o	-	-	-	-	46
• Rear centre console <sup>1)</sup>	o	o	o	o	o	o	o	o	o	o	o	o	o	o	o <sup>2)</sup>	o <sup>2)</sup>	o <sup>2)</sup>	-	46
• B-pillar seat belt outlet trim <sup>1)</sup>	o	o	o	o	o	o	o	o	o	o	o	o	o	o	o <sup>2)</sup>	o <sup>2)</sup>	o <sup>2)</sup>	-	-
• Interior package in carbon	-	-	-	-	-	-	-	-	-	-	-	-	-	-	-	o	-	EZA	-
	-	-	-	-	-	-	-	-	-	-	-	-	-	-	-	o	-	EZC	-
• Extended trim package in carbon	-	-	-	-	-	-	-	-	-	-	-	-	-	-	-	o	-	EZB	-
	-	-	-	-	-	-	-	-	-	-	-	-	-	-	-	o	-	EZD	-

<sup>1)</sup> This option is available in dark macassar wood (satin-matt), carbon and Aluminium Look. Please refer to the current price list for your specific vehicle for details and part numbers.

<sup>2)</sup> This option is available in carbon only.





Interior: macassar wood



Interior: carbon



Interior: Aluminium Look



Three-spoke multifunction steering wheel and PCM package in Aluminium Look

### Interior: aluminium/Aluminium Look/stainless steel.

#### Option

Option	911 Carrera	911 Carrera S	911 Carrera 4	911 Carrera 4S	911 Carrera Cabriolet	911 Carrera S Cabriolet	911 Carrera 4 Cabriolet	911 Carrera 4S Cabriolet	911 Targa 4	911 Targa 4S	911 Turbo	911 Turbo S	911 Turbo Cabriolet	911 Turbo S Cabriolet	911 GT2 RS	911 GT3	911 GT3 RS	I no.	Page
• Instrument cluster surround in Aluminium Look	○	○	○	○	○	○	○	○	○	○	○	○	○	○	○	○	○	XCL	–
• Three-spoke multifunction steering wheel in Aluminium Look	○	○	○	○	○	○	○	○	○	○	○	○	○	○	○	○	○	XPU	47
• Air vent slats in Aluminium Look	○	○	○	○	○	○	○	○	○	○	○	○	○	○	○	○	○	CDA	–
• Dashboard trim strip in Aluminium Look	○	●	○	●	○	●	○	●	○	●	○	●	○	●	○	○	○	CDE	46
• PCM package in Aluminium Look	○	○	○	○	○	○	○	○	○	○	○	○	○	○	○	○	○	CCP	23, 47
• Sports bucket seat belt passages in Aluminium Look	○	○	○	○	○	○	○	○	○	○	○	○	○	○	○	○	○	CMS	–

– not available ○ I number/extra-cost option ● standard equipment W no-cost option  
 More detailed information on individual equipment and equipment packages can be found in the current vehicle price list.



Gear and handbrake levers in aluminium I



PDK gear selector and handbrake lever in aluminium

### Interior: aluminium/Aluminium Look/stainless steel.

Option	911 Carrera	911 Carrera S	911 Carrera 4	911 Carrera 4S	911 Carrera Cabriolet	911 Carrera S Cabriolet	911 Carrera 4 Cabriolet	911 Carrera 4S Cabriolet	911 Targa 4	911 Targa 4S	911 Turbo	911 Turbo S	911 Turbo Cabriolet	911 Turbo S Cabriolet	911 GT2 RS	911 GT3	911 GT3 RS	I no.	Page
• Gear and handbrake levers in aluminium I	○	○	○	○	○	○	○	○	○	○	○	○	○	○	○	○	○	ECA	18, 48
• Gear and handbrake lever trim package I	○	○	○	○	○	○	○	○	○	○	○	○	○	○	○	○	○	DAX	–
• Gear and handbrake levers in aluminium II	○	○	○	○	○	○	○	○	○	○	○	○	○	○	○	○	○	ECC	–
• Gear and handbrake lever trim package II	○	○	○	○	○	○	○	○	○	○	○	○	○	○	○	○	○	DAW	–
• PDK gear selector and handbrake lever in aluminium	○	○	○	○	○	○	○	○	○	○	○	○	○	○	○	○	○	ECB	26, 49
• PDK gear selector and handbrake lever personalisation package	○	○	○	○	○	○	○	○	○	○	○	○	○	○	○	○	○	DAZ	12

### Interior: aluminium/Aluminium Look/stainless steel.

Option	911 Carrera	911 Carrera S	911 Carrera 4	911 Carrera 4S	911 Carrera Cabriolet	911 Carrera S Cabriolet	911 Carrera 4 Cabriolet	911 Carrera 4S Cabriolet	911 Targa 4	911 Targa 4S	911 Turbo	911 Turbo S	911 Turbo Cabriolet	911 Turbo S Cabriolet	911 GT2 RS	911 GT3	911 GT3 RS	I no.	Page
• Handbrake lever in aluminium II	○	○	○	○	○	○	○	○	○	○	○	○	○	○	○	○	○	XFP	25
• Handbrake lever in aluminium II with decorative stitching in contrasting colour	○	○	○	○	○	○	○	○	○	○	○	○	○	○	○	○	○	CFP	–
• PDK gear selector gate surround in Aluminium Look	○	○	○	○	○	○	○	○	○	○	○	○	○	○	○	○	○	XWR	–
• Gear lever/selector trim in Aluminium Look	○	●	○	●	○	●	○	●	○	●	○	●	○	●	○	○	○	CDF	46
• Sports-style footrest	○	○	○	○	○	○	○	○	○	○	○	○	○	○	○	○	○	XXZ	–

– not available ○ I number/extra-cost option ● standard equipment W no-cost option  
 More detailed information on individual equipment and equipment packages can be found in the current vehicle price list.





Personalised door sill guards in stainless steel with Carrera S Cabriolet logo in Marrone Metallic



Door sill guards in carbon



Door sill guards in carbon, illuminated



Door sill guards in stainless steel



Personalised door sill guards in stainless steel, illuminated

## Door sill guards.

Option	911 Carrera	911 Carrera S	911 Carrera 4	911 Carrera 4S	911 Carrera Cabriolet	911 Carrera S Cabriolet	911 Carrera 4 Cabriolet	911 Carrera 4S Cabriolet	911 Targa 4	911 Targa 4S	911 Turbo	911 Turbo S	911 Turbo Cabriolet	911 Turbo S Cabriolet	911 GT2 RS	911 GT3	911 GT3 RS	I no.	Page
• Door sill guards in carbon	o	o	o	o	o	o	o	o	o	o	o <sup>1)</sup>	o <sup>1)</sup>	o <sup>1)</sup>	o <sup>1)</sup>	o	o	o	X69	51
• Door sill guards in carbon, illuminated	o	o	o	o	o	o	o	o	o	o	o <sup>1)</sup>	o <sup>1)</sup>	o <sup>1)</sup>	o <sup>1)</sup>	o	o	o	XXD	51
• Personalised door sill guards in carbon, illuminated	o	o	o	o	o	o	o	o	o	o	o	o	o	o	o	o	o	CXE	–
• Door sill guards in stainless steel	o	o	o	o	o	o	o	o	o	o	o <sup>1)</sup>	o <sup>1)</sup>	o <sup>1)</sup>	o <sup>1)</sup>	o	o	o	X70	51
• Door sill guards in stainless steel, illuminated	o	o	o	o	o	o	o	o	o	o	o <sup>1)</sup>	o <sup>1)</sup>	o <sup>1)</sup>	o <sup>1)</sup>	o	o	o	XXB	–
• Personalised door sill guards in stainless steel	o	o	o	o	o	o	o	o	o	o	o	o	o	o	o	o	o	CUA	50
• Personalised door sill guards in stainless steel, illuminated	o	o	o	o	o	o	o	o	o	o	o	o	o	o	o	o	o	CXC	27, 51

<sup>1)</sup> Available from 08/2000 at the earliest.

– not available o I number/extra-cost option • standard equipment W no-cost option

More detailed information on individual equipment and equipment packages can be found in the current vehicle price list.



# Designing your Porsche

## Porsche Exclusive – What else is exclusive to each and every car? Exclusive advice.

Everything starts with the right advice. And the focus is on you and your exclusive wishes and requirements. We offer personal support and individual expert advice to each and every customer.

So, why wait? Make an appointment with your Porsche Centre to discuss your requirements.

Or contact the Porsche Exclusive Customer Centre in Zuffenhausen directly:  
tel.: +49 (0)711 911-25977 or e-mail: [customercenter-exclusive@porsche.de](mailto:customercenter-exclusive@porsche.de).

You can see what we really mean by customisation at our Porsche Exclusive Customer Centres in Zuffenhausen and Leipzig.

Here, among other things, you can select the materials, exclusive woods, paint colours and leather of your choice and plan your own

Porsche using the Porsche Car Configurator. We want to show you what we can do. And you can also experience how we make customer requirements into reality, here, directly on site. Down to the finest detail. Just as you expect from Porsche Exclusive.

The Porsche new vehicle warranty applies for all Porsche Exclusive options and special designs. Please note that delivery times may be extended for certain Porsche Exclusive equipment.



## Porsche Financial Services

Our innovative suite of financial services is specially tailored to the needs of Porsche owners. Products range from attractive finance and leasing options to vehicle insurance and the Porsche Card.

## Porsche Used Car Programme

Porsche Approved is the simple way to find the perfect pre-owned Porsche, anywhere in the world. Every car is rigorously tested and comes with a comprehensive vehicle warranty.

## Porsche Tequipment

Personalise your Porsche at any time after purchase with the Tequipment range of approved accessories. Designed exclusively for your car, every product is fully guaranteed.

## Service



## Porsche Online

For all the latest news and information from Porsche, go to [www.porsche.com](http://www.porsche.com).



## Porsche Design

### Driver's Selection

With products ranging from fashion and accessories to tailored luggage, this unique collection combines quality and style with everyday practicality.



## Porsche Clubs

Since the first Porsche Club was founded in 1952, their number has grown to 613 with a total of 120,000 members worldwide. To find out more, call +49 (0)711 911-78307 or go to [www.porsche.com](http://www.porsche.com).



## Porsche Driving Experience

The Porsche Travel Club offers exclusive holidays and adventures worldwide. Call +49 (0)711 911-78155. Explore your Porsche at the limits of performance with the Porsche Sport Driving School. Find out more on +49 (0)711 911-78683.





Information Provided by:  
**DEALER**  
E-PROCESS

## Exclusive expertise

**'At the beginning, I looked around but could not find the car I was dreaming of. So I decided to build it myself.'**

Even today, we take Ferry Porsche's philosophy to heart.

The 911 Sport Classic from Porsche Exclusive is the perfect example of what we really mean by customisation. A production run as limited as it is exclusive. Our overriding principle? To make full use of the traditional skills of our craftsmen. To create a car that until then had never existed – and never will again. It was developed with passion and dedication, and handcrafted in the Exclusive Manufaktur factory in a limited-edition run of just 250 cars. In other words, it's the ultimate in personalisation.



To prove something to yourself, sometimes you need only follow your own dreams.

In 2009, with the 911 Sport Classic, we proved what we stand for: making dreams into reality. Dreams of design, performance, style and exclusivity.

The 911 Sport Classic may have been limited in quantity, but your dreams are not. This is why we aim to do whatever possible to fulfil your wishes. Make your Porsche 911 even more exclusive by having it personalised to your own requirements direct from the factory. Handcrafted with the utmost care, using the finest materials and with a passion for detail. In short, with expertise and genuine devotion.

Then there are the appealing extras as featured on the 911 Sport Classic. Would you like painted wheels, the gear and handbrake levers in aluminium I, and the mirror attachment point finishers and exterior mirror lower trims in a black painted finish? Almost anything is possible. This is the way in which unique cars continue to be made, and how dreams come true.







Information Provided by:  
**DEALER**  
P O R S C H E

The vehicles shown contain personalised and Porsche Exclusive items of equipment which are available as extra-cost options only. The availability of equipment and options may vary from market to market due to local restrictions and regulations.

We advise the use of only original Porsche parts for your vehicle. These are available from your Porsche Centre who will be pleased to advise you. Porsche cannot accept liability for damages caused by the use of replacement parts or accessories which are not approved by Porsche.

Even if a potential supplier has been granted a general operating licence for accessories or parts, the use of such parts may affect the safety of the vehicle. Porsche

is not able to check non-original parts because of the large number of products which are offered on the aftermarket. Please note that your vehicle warranty can also be affected if parts are used which are not formally approved by Porsche. Porsche reserves the right to make changes to design, equipment and availability, and also to modify colours and materials. Errors and omissions excepted.

© Dr. Ing. h.c. F. Porsche AG, 2010  
All texts and descriptions, images and other information contained in this catalogue are the copyright of Dr. Ing. h.c. F. Porsche AG.

Duplication, reproduction or other use of this brochure is not permitted without prior written approval from Dr. Ing. h.c. F. Porsche AG.

Porsche, the Porsche Crest, 911, Carrera, Targa, PDK, PCCB, PCM and Tequipment are registered trademarks of Dr. Ing. h.c. F. Porsche AG.

Dr. Ing. h.c. F. Porsche AG supports the use of paper from sustainable forestry sources. The paper used in this brochure is certified to the strict rules of the PEFC (Programme for the Endorsement of Forest Certification).

Dr. Ing. h.c. F. Porsche AG  
Porscheplatz 1  
70435 Stuttgart  
Germany  
[www.porsche.com](http://www.porsche.com)

Edition: 02/10  
Printed in Germany  
WSL91101000120 GB/WW

