

IT TAKES CONVICTION TO STAND UP TO THE NAYSAYERS.
A CREATIVE FIRE THAT'S UNAFRAID OF THE BLANK PAGE.
AND COURAGE TO FLIP CONVENTIONAL WISDOM ON ITS HEAD.
THIS IS THE ONLY WAY TO CHANGE THE GAME.
THAT'S WHY AT MAZDA WE USE INNOVATIVE THINKING AND TECHNOLOGIES
TO ENGINEER VEHICLES THAT NEVER COMPROMISE PERFORMANCE OR STYLE.
MAKING EVERY MAZDA MORE EXHILARATING.
THESE ARE ACTIONS, NOT WORDS. PROOF, NOT THEORIES.

THIS IS THE MAZDA WAY.



zoom-zoom

2015 MAZDA CX-9



MazdaUSA.com
[facebook.com/mazda](https://www.facebook.com/mazda)

© 2014 Mazda Motor of America, Inc. • 7755 Irvine Center Drive, Irvine CA 92618 • (800) 639-1000 • Printed in U.S.A. 9/14 (45K) • Part No. 9999-92-CX9-15

PRODUCT CHANGES AND OPTIONS AVAILABILITY: Following publication of this brochure, certain changes in standard equipment, options, prices and the like or product delays may have occurred which would not be included in these pages. Your Mazda Dealer is your best source for up-to-date information. Mazda reserves the right to change product specifications at any time without incurring obligations. Options shown or described in this brochure are available at extra cost and may be offered only in combination with other options or subject to additional ordering requirements or limitations.





WHAT A FISH BOWL CAN TEACH US

When it came to thinking about things in a vehicle such as g-force, Mazda engineers looked outside the box. Or, in this case, the bowl. Because in order to deliver an exceptional and dynamic driving experience, we looked at the relationship between our friend and its glass bowl.

Our underwater experiment taught us that g-force and stability can affect the water by making it either slosh around or swirl in fluid motion. Whether we were accelerating, turning or braking, the goal was to never upset the balance while in motion.

Not only can you witness g-force in action, you can feel it in your body, all the way through your neck. With smooth, proper g-force behavior, like that in the Mazda CX-9, you'll never feel like you're driving a big, lumbering SUV. Even all the way back in the third-row seat, it's a smooth, fluid ride. But don't take our word for it. Take a ride in a Mazda CX-9 for yourself and you'll never feel like you're a fish out of water.

ABOUT G-FORCE.

Terminal 3

*“More style. More space. More amenities.
I’m all about more.”*

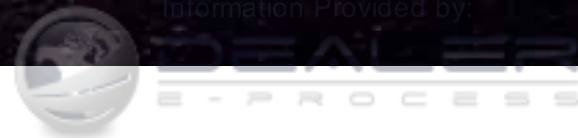
Janice, Mazda CX-9 driver

“The words ‘agile’ and ‘sporty’ aren’t usually tip-of-the-tongue when describing a large crossover—unless it’s the CX-9.” Cars.com



**DEFYING CONVENTION, ONE SEAT AT A TIME.
STARTING WITH THE DRIVER'S SEAT.**

In building the 7-passenger Mazda CX-9, we saw no reason why something spacious and luxurious couldn't also feel incredibly nimble. We're Mazda; we refuse to accept what's considered impossible. It's that courageous engineering that allows the CX-9 to achieve what few other SUVs dare—the combination of opposing forces into one harmonious package. Elegant styling with utilitarian design. Both flexible and focused, the CX-9 empowers you with an uncompromising array of advanced technology and convenience features, including Pandora® integration and an available navigation system. One drive and you'll see the improbable is now possible in the Mazda CX-9.



Mazda CX-9 Grand Touring AWD shown in Zeal Red Mica

WHERE THE FINER POINTS ARE GRAND.

Welcome to an interior designed to astonish with the smallest details. The Mazda CX-9 is a testament to craftsmanship, from its available leather-trimmed seats—including an available 8-way power-adjustable driver's seat with available 3-setting memory system—to its leather-wrapped steering wheel and shift knob. No matter where you're headed, you're surrounded by the touch of refinement.





Mazda CX-9 Grand Touring interior shown in black leather with Technology Package



/ ENTRY AND EXIT /

The CX-9 has large rear doors that open up to 72 degrees to create an extra-wide opening, making entry and exit quick and easy. And to eliminate the danger of tripping over high side sills, the CX-9's cabin floor and side sills are flush with each other—unlike some SUVs with sills that are up to 3 inches higher than their floors.

/ THIRD-ROW ACCESS /

A single hand is all it takes to operate the CX-9's ingenious "tilt-and-slide" mechanism on the 60/40 split fold-down second-row seatbacks. It automatically moves the seat forward nearly 9 inches to give passengers easy access to third-row seating.



Information Provided by
DEALER
E-PROCESS

BIG ON AMENITIES. EVEN BIGGER ON CONVENIENCE.

In keeping up with life's daily challenges, little things make a difference. The Mazda CX-9 has more volume behind its first and second rows, and more second- and third-row legroom, than Honda Pilot and Toyota Highlander. We added two third-row storage bins that are big enough to hold electronic games and controllers for the kids (and adults). And we also left room for eight cup holders and four one-liter bottle holders. With such a thoughtfully designed interior, it's easy to make it easy on everyone.

MORE THAN ACCENTS. A WHOLE NEW LANGUAGE OF SOPHISTICATION.

For drivers and passengers alike, the smallest details are designed to make a grand statement about craftsmanship. Surround yourself with rich trim and experience high-class contrasting stitching on the available leather-trimmed seats. Meticulous attention to detail is apparent everywhere as sport and splendor merge in absolute harmony.





IT'S YOUR WAY ON THE HIGHWAY.

Even the most passionate drivers enjoy being pampered. So our engineers outfitted the CX-9's cockpit with the ultimate in comfort and convenience. The long list of standard features includes steering-wheel-mounted audio and cruise controls, Bluetooth® hands-free phone and audio streaming, and three-zone automatic climate control. And integrated Pandora® controls let your personal taste in music be the soundtrack for any road trip. Plus there's the standard 6-speaker MP3 player-compatible audio system with HD Radio that's SiriusXM Satellite Radio* ready. Or hook up your portable music device to the standard USB audio input port. To help make finding your destination quick and easy, a navigation system with a 5.8-inch full-color touch-screen display is also available, as are rain-sensing wipers. Everywhere you look, intelligence abounds.

Mazda CX-9 Grand Touring interior shown in black leather with Technology Package

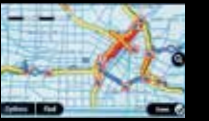
/ BLUETOOTH® HANDS-FREE PHONE AND AUDIO STREAMING /

With voice commands, making and receiving calls is as easy as pushing a button and saying "hello." And the Bluetooth wireless capability helps you stay entertained with streaming audio from your compatible mobile device.



/ MAZDA NAVIGATION SYSTEM /

Available on select CX-9 models, our convenient factory-integrated navigation system offers the advanced features of TomTom® navigation devices, including voice recognition, advanced lane guidance and route recommendations.



/ PANDORA® INTERNET RADIO /

Experience music on your terms with up to 100 unique "stations" through Pandora, all seamlessly streaming through your wireless Bluetooth-enabled and Internet-connected device.



/ 8-WAY POWER-ADJUSTABLE DRIVER'S SEAT WITH MEMORY /

A driver's seat with position memory is standard on the Grand Touring. At the touch of a button, it automatically adjusts up to three driver's seat settings to the exact preset position you desire.



/ DVD REAR-SEAT ENTERTAINMENT SYSTEM /

Available on the Grand Touring, the DVD Rear-Seat Entertainment System features a ceiling-mounted DVD player, 9-inch fold-down LCD screen, audio/video/game console inputs, wireless remote, two wireless headsets and a 115-volt outlet for game consoles.



/ SMS TEXT MESSAGE AUDIO DELIVERY AND REPLY /

Now, when a text comes in while you're driving, you can stay focused on the road ahead. Enjoy fully integrated text display and audible readout, and the ability to reply by choosing from a number of preset, standardized return messages.



/ REARVIEW CAMERA* /

This helpful system on Touring and Grand Touring models offers increased visibility of objects behind you, and it's automatically activated whenever the CX-9 is shifted into reverse.



/ BOSE® CENTERPOINT® SURROUND SOUND SYSTEM WITH AUDIOPILOT® /

Custom-engineered for the CX-9, this available system features its patented Centerpoint signal-processing circuitry, enabling this impressive 277-watt 10-speaker system to produce stunning multichannel Bose Surround Sound performances.



*SiriusXM Satellite Radio reception requires a subscription and Mazda satellite radio. See full disclaimer in Specifications. †TomTom and the TomTom logo are registered trademarks of TomTom International B.V. All rights reserved. ‡Rearview camera does not provide a comprehensive view of the entire rear area of this vehicle. Always check your surroundings.

Bluetooth is a registered trademark of Bluetooth SIG, Inc.



Mazda CX-9 Grand Touring AWD shown in Liquid Silver Metallic

A SOLID RIDE FOR ADVENTUROUS SPIRITS.

The versatile CX-9 is engineered to help you and your family get to your next adventure—no matter where it may be. Beyond delivering a stable, solid ride, the CX-9 includes features such as the available Active Torque Split All-Wheel-Drive System that allows you to drive with confidence on a variety of roads in a variety of weather conditions. And with a larger available wheel size than either the Toyota Highlander or Honda Pilot—and the control that comes from having more rubber on the road—the CX-9 truly belongs in a confidence-inspiring category of its own.



/ ADVANCED HANDLING AND STEERING /

In designing the CX-9, instead of looking at what the rest of the lumbering, bloated SUVs were doing, Mazda engineers used our own MX-5 as a benchmark for handling. The CX-9's sophisticated, fully independent suspension system includes MacPherson struts up front and an advanced multilink system in the rear that work in tandem to promote accurate and surefooted wheel-to-road contact. Plus, hefty stabilizer bars at both ends help minimize body roll. The CX-9's precise, power-assisted rack-and-pinion steering system also boasts engine-speed-sensing variable assist.

/ ACTIVE TORQUE SPLIT ALL-WHEEL-DRIVE SYSTEM /

The available Active Torque Split All-Wheel-Drive System automatically maintains an ideal balance between front and rear axle torque (up to 50/50) by continuously monitoring wheel speed and engine data, and instantly adjusting to any adverse changes in road and weather conditions.



EASY COME. EASY GO. EASY EVERYTHING.



Mazda CX-9 Grand Touring AWD shown in Meteor Gray Mica

/ POWER LIFTGATE /

Open and close the rear liftgate with the touch of a button. The CX-9's available power rear liftgate opens and closes by remote control, making loading easier and more convenient.



/ VERSATILE CARGO SPACE* /

Besides deftly handling up to seven adults, the CX-9 also provides a generous 17.2 cubic feet of cargo space behind the third-row seat. A quick tug on the convenient release straps quickly folds down the third row's 50/50 split fold-flat seatback to give you 48.3 cubic feet. Folding down the second row's 60/40 split fold-flat seatback expands the CX-9's cargo room to a full 100.7 cubic feet.

*Please remember to properly secure all cargo.

Information Provided by:





Mazda CX-9 Grand Touring AWD shown in Meteor Gray Mica

THE RIGHT WAY TO THINK ABOUT PERFORMANCE.

Before choosing your new vehicle, consult your right foot. After all, it has an intimate relationship with everything under the hood. And in the Mazda CX-9, that means a powerful 273-horsepower 3.7-liter V6, featuring variable valve timing, electronic throttle control and a forceful 270 pound-feet of torque—more than Honda Pilot or Toyota Highlander. It also provides up to an available 3,500-pound towing capacity* when properly equipped. Mazda engineering is certainly left-brained and precise, but it's equally dedicated to keeping you and your right foot very happy together.

*Towing capacities shown are maximums and must be reduced by the weight of any passenger, cargo hitch or optional equipment in the towing vehicle. The following equipment may also be required: load-carrying hitch for trailers under 2,000 lb and load-equalizing hitch for trailers over 2,000 lb. Towing a trailer will have an effect on vehicle's handling, braking, durability, performance and driving economy. For specific information on recommended or required equipment, see your Mazda Dealer. Hitches are available through manufacturers other than Mazda.

†Based on EPA estimates for 2015 Mazda CX-9 FWD models with 3.7L engine and automatic transmission 17 city/24 highway MPG. Actual results will vary.



Information Provided by:
DEALER
 E-PROCESS



/ MANUAL-SHIFT MODE /

A 6-speed Sport automatic transmission, standard on all CX-9 models, combines the extra control—and fun—of a manual-shift mode with the smooth-shifting convenience of an advanced automatic transmission.



/ VARIABLE VALVE TIMING /

Normally, “acceleration” and “fuel efficiency” would seem to work against each other. But the CX-9’s 3.7-liter V6 engine bucks the trend with intelligent variable valve timing that maximizes high-rpm power and low-end torque, yet delivers up to an EPA-estimated 24 highway MPG.†

“The Mazda CX-9 combines a spacious interior that can be lavishly appointed along with the sporty handling characteristics that Mazdas are known for.” Edmunds.com



PLAYING IT SAFE BY ENGINEERING TO THE NEXT LEVEL.

Our obsessive engineers go the distance to help keep you safe. The numerous active and passive safety features in the CX-9 were painstakingly crafted to give you and your family one feeling: peace of mind. Three-point seatbelts for all seven positions, side-impact door beams, front and rear crumple zones, dual LATCH child-safety seat anchors and tethers in the second row—and we're only just beginning. A standard collapsible steering column helps to absorb energy in the event of a heavy frontal impact, while a foldaway brake assembly helps reduce the risk of serious injuries to the ankle and leg. These are just a few of the specialized anticipatory safety features you'll find in your CX-9.



Mazda CX-9 Grand Touring AWD shown in Zeal Red Mica



/ SIX STANDARD AIR BAGS* /

Advanced dual front air bags that utilize inflators with crash-zone, driver's seat-position and passenger-weight sensors are standard on all CX-9 models—as are dual side airbags and dual side-impact air curtains with coverage for both front and rear passengers.

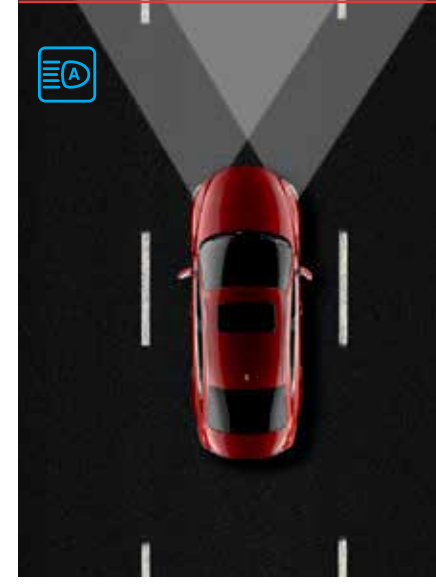
/ "TRIPLE H" BODY CONSTRUCTION /

By adding extra steel reinforcements to critical areas of the body, Mazda's "Triple H" body construction system enhances structural integrity, impact protection and rigidity for superior handling. In key areas, the CX-9 also uses high tensile steel, which is stronger and more rigid than conventional steel.



/ ENHANCED STABILITY AND CONTROL /

The Traction Control System detects wheelspin, and then reduces engine power to help improve traction when accelerating in slippery conditions. Dynamic Stability Control† modulates the engine and brakes when over- or understeer is detected, helping to keep you on your intended path while cornering. And during accident-avoidance maneuvers, Roll Stability Control uses on-board roll-rate sensors to monitor vehicle movement and automatically apply the brakes to help keep the CX-9 stable.



/ CLEARER VISION /

Standard on Grand Touring models, the auto on/off Bi-Xenon HID headlights and LED daytime running lights automatically provide you with enhanced nighttime illumination.



/ BLIND SPOT MONITORING SYSTEM WITH REAR CROSS TRAFFIC ALERT* /

The system uses radar sensors to detect objects in your left or right blind spots and then alerts you with a warning light that appears in the corresponding side mirror. If you signal a lane change while an object is there, the light blinks and a cabin warning chime sounds. Backing out of parking spaces is tricky if you can't see, so Rear Cross Traffic Alert warns you when cars are coming. Both are technologies you won't find on the Honda Pilot.



/ ADVANCED BRAKING TECHNOLOGIES /

A comprehensive set of advanced braking technologies comes standard on the CX-9. An Anti-lock Brake System pulses the brakes hundreds of times per second, preventing wheel lockup to help you maintain steering control in emergency braking situations. Electronic Brakeforce Distribution automatically applies force to individual brakes based on changing road conditions, helping to keep you in control. And in emergency situations, Brake Assist automatically increases braking pressure if you need it, thereby reducing stopping distance.

*Always wear your seat belt and secure children in the rear seats in appropriate child restraints. †Dynamic Stability Control (DSC) is an electronic system designed to help the driver maintain control under adverse conditions. It is not a substitute for safe driving practices. Factors including speed, road conditions and driver steering input can all affect whether DSC will be effective in preventing loss of control. Please see your owner's manual for further details. ‡Always check your mirrors. Be aware of the traffic around you.

Information Provided by:



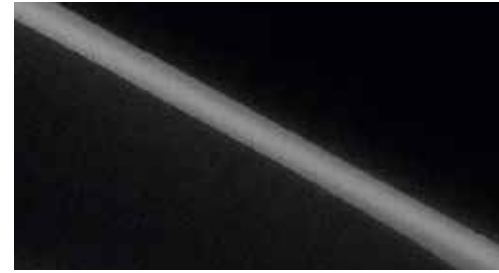
MAZDA CX-9 COLORS



Zeal Red Mica



Meteor Gray Mica



Jet Black Mica



Blue Reflex Mica



Liquid Silver Metallic



Titanium Flash Mica

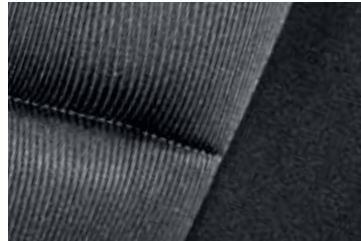


Crystal White Pearl Mica*
*Extra cost option.

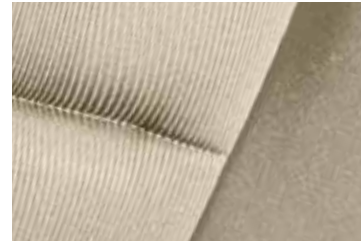
MAZDA CX-9 UPHOLSTERY

SPORT

Black Cloth

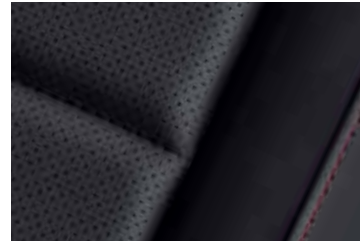


Sand Cloth



TOURING AND GRAND TOURING

Black Leather



Sand Leather



MAZDA CX-9 WHEELS



18-inch Alloy



20-inch Alloy with
Platinum Silver finish



MAZDA CX-9

MAZDA2



MX-5 MIATA



MAZDA3 4-DOOR



MAZDA3 5-DOOR



MAZDA6



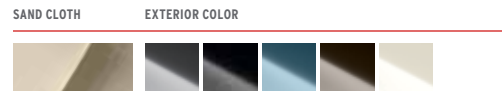
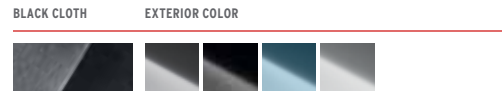
MAZDA5



MAZDA CX-5



MAZDA CX-9 SPORT



Includes the following features:

EXTERIOR

- Halogen headlights
- 18-inch alloy wheels
- P 245/60 R18 tires
- Rear roofline spoiler
- Body-colored door handles
- Power side mirrors

SAFETY & SECURITY

- 3-point seatbelts at all seating positions
- Advanced dual front air bags* with driver's seat-position and passenger-weight sensors
- Front side-impact air bags* and side-impact air curtains with rollover protection
- Dynamic Stability Control† and Traction Control System
- E911 automatic emergency notification

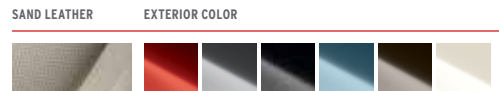
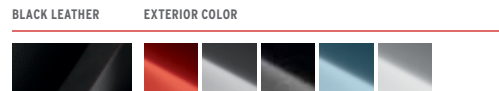
INTERIOR

- Three-zone automatic climate control
- Power windows and door locks
- Remote keyless entry
- Cloth-trimmed seats
- 6-way manually-adjustable driver's seat
- Cruise control
- Steering-wheel-mounted audio and cruise controls
- AM/FM/CD/MP3-compatible audio system with 6 speakers
- 5.8-inch color touch-screen display
- USB audio input port
- Bluetooth hands-free phone and audio streaming capability
- HD Radio
- Pandora® Internet radio compatibility
- SMS text message audio delivery and reply

PACKAGES

- Power Driver's Seat Package** includes 8-way power-adjustable driver's seat with power lumbar support, heated front cloth seats and heated side mirrors

MAZDA CX-9 TOURING



Includes the following features in addition to or in place of CX-9 Sport:

EXTERIOR

- Auto-off headlights
- Heated side mirrors

SAFETY

- Blind Spot Monitoring System† with Rear Cross Traffic Alert†
- Rear backup sensors**

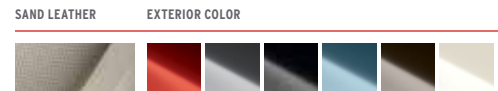
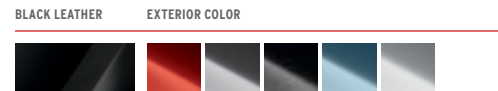
INTERIOR

- Heated front seats
- Leather-trimmed seats (1st- and 2nd-row outboard seating positions)
- 8-way power-adjustable driver's seat with power-adjustable lumbar support
- 4-way power-adjustable front passenger seat
- Rearview camera††

PACKAGES

- Touring Technology Package** includes Bose® Centerpoint® Surround Sound System with 10 speakers, fog lights, Mazda Advanced Keyless Entry & Start System, Mazda navigation system, power sliding-glass moonroof, power open/close rear liftgate, SiriusXM Satellite Radio†† with 4-month trial subscription to the SiriusXM All Access Package, and Recreational Accessory Package
- Recreational Accessory Package** available at no additional cost, this package includes roof rails and cross bars, cargo net and stainless steel rear bumper guard

MAZDA CX-9 GRAND TOURING



Includes the following features in addition to or in place of CX-9 Touring:

EXTERIOR

- Bi-Xenon HID headlights with auto on/off
- LED daytime running lights
- Halogen fog lights
- Bright-finish door handles
- Power open/close rear liftgate
- Rain-sensing windshield wipers
- Power side mirrors with integrated turn signals
- Mirror memory function and "tilt-in-reverse"
- 20-inch alloy wheels with Platinum Silver finish

SECURITY

- Alarm system

INTERIOR

- Driver's power seat memory
- Mazda Advanced Keyless Entry & Start System
- Auto-dimming rearview mirror with HomeLink®
- Bordeaux accent interior trim

PACKAGES

- Grand Touring Technology Package** includes Bose® Centerpoint® Surround Sound System with 10 speakers, Mazda navigation system, power sliding-glass moonroof, SiriusXM Satellite Radio†† with 4-month trial subscription to the SiriusXM All Access package, and Recreational Accessory Package (not available with Rear-Seat Entertainment System with Bose® Audio Package)
- Rear-Seat Entertainment System with Bose® Audio Package** includes rear DVD player with 9-inch screen, Bose® Centerpoint® Surround Sound System with 11 speakers, Mazda navigation system, 3rd-row 115-volt accessory outlet, SiriusXM Satellite Radio†† with 4-month trial subscription to the SiriusXM All Access Package, and Recreational Accessory Package (not available with Grand Touring Technology Package)

- Recreational Accessory Package** available at no additional cost, this package includes roof rails and cross bars, cargo net and stainless steel rear bumper guard

- Towing Prep Package (FWD models)** includes heavy-duty transmission cooler and radiator fan, and revised Engine Control Module (requires towing receiver hitch, sold separately)

MAZDA CX-9 SPECIFICATIONS

ENGINE	
Engine size and type	3.7L DOHC 24-valve V6
Horsepower, SAE net	273 @ 6,250 rpm
Torque, SAE net (lb-ft)	270 @ 4,250 rpm
Redline	6,500 rpm
Compression ratio	10.3:1
Fuel System	Multiport electronic fuel injection
Body type	Unibody with "Triple H" construction
Turning circle, curb-to-curb (ft)	37.4
Total curb weight (lb)	FWD: 4,323 AWD: 4,559

CAPACITIES	
Passenger volume (cu ft)	139.4 (without moonroof) 137.7 (with moonroof)
Cargo volume (cu ft)	17.2 (2nd- and 3rd-row seatbacks up) 48.3 (3rd-row seatback folded) 100.7 (2nd- and 3rd-row seatbacks folded)
Towing capacity (lb)	FWD: 2,000/3,500 with Towing Prep Package AWD: 3,500

EXTERIOR DIMENSIONS	
Wheelbase/overall length (in)	113.2 / 200.6 (without license plate holder)
Overall width/overall height (in)	76.2 / 68.0
Track, front/rear (in)	65.1 / 64.7
Ground clearance (in)	8.0

INTERIOR DIMENSIONS	
front / 2nd row / 3rd row	
Headroom (in)	39.6 / 39.0 / 35.4
Headroom with moonroof (in)	38.4 / 39.0 / 35.4
Legroom (in)	40.9 / 39.8 / 32.4
Shoulder room (in)	59.4 / 58.7 / 56.9
Hip room (in)	56.5 / 56.0 / 43.7

TRANSMISSION & DRIVETRAIN	
Automatic transmission	6-speed Sport
Front-wheel drive	Standard
All-wheel drive	Available Active Torque Split AWD

STEERING & SUSPENSION	
Steering type	Variable-assist power rack-and-pinion
Front suspension	Independent MacPherson strut with stabilizer bar
Rear suspension	Independent multi-link with stabilizer bar

BRAKES	
Front	Power-assisted ventilated disc
Rear	Power-assisted ventilated disc
ABS	4-wheel, 4-channel with Electronic Brakeforce Distribution and Brake Assist

FUEL ECONOMY	
EPA-estimated fuel economy (city/highway)	FWD: 17 / 24*** AWD: 16 / 22†††
Fuel capacity (U.S. gallons)	20.1
Recommended fuel	Regular unleaded gasoline

WE'RE COMMITTED TO OUR DRIVERS.

Every new 2015 Mazda CX-9 is protected by a:

- 3-year/36,000-mile* "bumper-to-bumper" limited warranty
- 3-year/36,000-mile* 24/7 Emergency Roadside Assistance program
- 5-year/60,000-mile* limited powertrain warranty
- 5-year/unlimited-mileage warranty against body rust-through

*Whichever comes first.



Even after your vehicle warranty has expired, Mazda Extended Confidence provides nearly all the same parts and components covered under your New-Vehicle Limited Warranty. Accepted nationwide and utilizing only Mazda Genuine Parts (where available), Mazda Extended Confidence gives you peace of mind for miles beyond your expectations.

FOR DETAILS, PLEASE SEE YOUR MAZDA DEALER, VISIT MAZDAUSA.COM OR CALL TOLL-FREE (800) 639-1000.

FINANCING WITHOUT THE FUSS.



Whether you're buying or leasing a new Mazda, Certified Pre-Owned Mazda or a used vehicle, Mazda Capital Services† can help make the financing process more convenient and satisfying. One of the largest auto lenders in America, Mazda Capital Services is known for first-class customer service, a wide range of financing options and highly competitive rates.

To find out which purchase or lease plan is right for you, talk with your Mazda Dealer or visit MazdaUSA.com.

†The tradename "Mazda Capital Services," as well as the Mazda and Mazda Capital Services logos, are owned by Mazda Motor Corporation or its affiliates and are licensed to JPMorgan Chase Bank, N.A. ("Chase"). Retail/loan and lease accounts are owned by Chase.



*Always wear your seat belt and secure children in the rear seats in appropriate child restraints. †Dynamic Stability Control (DSC) is an electronic system designed to help the driver maintain control under adverse conditions. It is not a substitute for safe driving practices. Factors including speed, road conditions and driver steering input can all affect whether DSC will be effective in preventing loss of control. Please see your owner's manual for further details. ‡Always check your mirrors. Be aware of the traffic around you. **Always check your mirrors and surroundings. ††Rearview camera does not provide a comprehensive view of the entire rear area of this vehicle. Always check your surroundings. ‡‡SiriusXM Satellite Radio reception requires a subscription and Mazda satellite radio. Subscriptions to SiriusXM services are sold by SiriusXM after a 4-month trial subscription to the SiriusXM All-Access package expires and are continuous until you call SiriusXM at 1-866-635-2349 to cancel. See SiriusXM Customer Agreement for complete terms at www.siriusxm.com. Sirius satellite service available only to those at least 18 and older in the 48 contiguous USA, DC, and P.R. (with coverage limitations). Sirius, XM and all related marks and logos are trademarks of Sirius XM Radio Inc. †††Based on EPA estimates for 2015 Mazda CX-9 FWD models with 3.7L engine and automatic transmission 17 city/24 highway MPG. Actual results will vary. ††††Based on EPA estimates for 2015 Mazda CX-9 AWD models with 3.7L engine and automatic transmission 16 city/22 highway MPG. Actual results will vary.

MAZDA CX-9 ACCESSORIES. IT'S YOUR MAZDA—MAKE IT YOUR OWN.

Customize your new Mazda CX-9 with Genuine Mazda Accessories. When installed by your Mazda Dealer, Genuine Mazda Accessories carry the same New-Vehicle Limited Warranty as your new Mazda. Ask your dealer for details.

01 // SOFT CARGO LINER* /

Keep your CX-9 clean with our durable Soft Cargo Liner, designed to work with the rear seats folded, upright or split. Covers both the 2nd and 3rd rows, and also folds out to protect the rear bumper. Allows for multiple configurations. Removes easily for quick cleanup.

02 // CARGO COVER* /

Keep your valuables out of view from prying eyes. Our Cargo Cover is easy to install, remove or retract when full cargo access is needed.

03 // CARGO MAT* /

Don't let your gear damage your Mazda's original carpet. Protect it from harm with a custom-fitted carpet Cargo Mat. Also includes Cargo Locks.

04 // ALL-WEATHER FLOOR MATS /

Help keep the great outdoors in its place. Custom-fitted to your CX-9, these All-Weather Floor Mats guard against snow, mud, sand and whatever else comes through the door.

05 // NAVIGATION /

Get where you need to go with our in-dash, fully integrated Navigation System. Easily installed by your dealer, it uses the CX-9's large in-dash full-color touch-screen display to give you voice-guided turn-by-turn directions, real-time traffic updates, intuitive voice recognition and much more.

06 // TRAILER HITCH* /

With a towing capacity up to 3,500 lb, it's easy to come out and play. Bring your toys to your favorite destination with this Class II-rated receiver designed especially for your Mazda CX-9. Four-pin trailer lighting connector sold separately. See your Mazda Dealer for details.

* Towing capacities shown are maximums. See full disclaimer on page 20.

07 // ROOF RACK ATTACHMENTS* /

The CX-9's generous storage options don't end with its spacious interior. You can also add Roof Rack Attachments to haul skis, a kayak—or whatever items you need to make your outdoor adventures possible. Roof rack attachments require roof rails and cross bars.

* Please remember to properly secure all cargo.



Information Provided



For a full list of Genuine Mazda Accessories for your CX-9, please visit: accessories.MazdaUSA.com



Last year, during our Mazda Drive for Good™ charitable program, our Mazda Dealers and partners raised millions of dollars for a number of national and local charities. But what's even more significant is that collectively, we pledged more than 50,000 hours of volunteer time to local and national organizations across the country. Our Mazda Dealers have a long history of giving back both time and money to their own communities. And their efforts truly define our Mazda values.

Mazda Drive for Good™ is just one of the many charitable programs that has allowed Mazda to donate millions to worthy causes across the United States since 1992.

Because giving back is the Mazda Way.



*We know your first impression of Mazda starts with us,
your Mazda Dealer.*

It's a responsibility we don't take lightly.

*It's why we work hard every day to make sure your customer service
experience exceeds your expectations, in every way.*

It extends beyond just helping you find the right vehicle.

It's what happens after you leave our dealership.

This is our way of changing the game in customer service.

One customer experience at a time.

THIS IS THE MAZDA WAY.

