



2016 LINCOLN MKS



In its most coveted form, beauty extends far beyond the surface. Just as it does in MKS. Precisely crafted with exceptional attention to detail, MKS is designed to transform everyday drives into special experiences. Its strong lines impart confidence while conveying grace from every angle. Its chrome accents gleam in the sunlight. As its beauty flows from within, the 2016 Lincoln MKS establishes a commanding presence and creates its own distinctive style of luxury.





**IMAGINE THE JOYFUL EMPOWERMENT OF GOLFING WITH CUSTOM-FIT CLUBS. IT'S A LOT LIKE THAT.**

The elegant simplicity of its controls instantly puts you at ease. Seated at the leather-wrapped heated<sup>1</sup> steering wheel of your new MKS, you'll notice paddle shifters discreetly tucked behind it. They give you the power to put the 6-speed SelectShift<sup>®</sup> automatic transmission through its paces any time you're in the mood for a more spirited drive.

The position of the adjustable<sup>1</sup> brake and accelerator pedals, the sideview mirrors, and the front seats can be set using power controls, then saved to memory for your MKS to recall at the touch of a button.

Providing personalized comfort for you and your front passenger, dual-zone electronic automatic temperature control lets you each set a different preferred temperature. This feature also works in tandem with the Remote Start System to prepare the vehicle for your arrival. MyKey<sup>®</sup> lets you program a key to establish an earlier low-fuel warning and much more. Personalized control. It's yours with MKS.



**ADAPTIVE HID HEADLAMPS**

To provide more visibility when driving around curves, adaptive HID headlamps feature beams that move in the same direction as the steering wheel. Their bright, white light also provides better visibility than conventional halogen lamps. Paired with the convenience of auto high beams, they add an extra measure of ease to your Lincoln MKS.

<sup>1</sup>Available feature.



**BEAUTIFULLY COMFORTING. LINCOLN MKS REJUVENATES.**

Every day is the perfect day for a drive in MKS. Surrounded by the richness of **genuine wood accents**, the gracefully contoured front seats are **heated and cooled** for extra soothing in all sorts of climates. They're also trimmed in **Bridge of Weir™ leather**, which is created using an **organic tanning process**. You may encounter it on fine furniture, ocean liners and jets, too.

To help reduce muscle fatigue in your legs and lower back on longer drives, the **multicontour front seats with Active Motion®<sup>1</sup>** feature massage functionality that utilizes air cushions inside the seat bottoms and seat backs to provide a gentle rolling movement.

For a refined acoustic experience, **active noise control<sup>1</sup>** cancels out unwanted engine sounds by sending opposing sound waves through the audio system – helping increase your enjoyment of conversations, music and other audio entertainment inside MKS.



<sup>1</sup>Available feature.

# INNOVATIVE TECHNOLOGIES

What could be easier than speaking your mind? Our next generation of voice-activated technology – **SYNC® 3** – connects you to the world around you with its straightforward new design and features.<sup>1</sup> Audio, phone, navigation<sup>2</sup> and other functions are concisely presented on the full-color 8" LCD touch screen. Whether you command it using simple, everyday language, or swipe its capacitive touch screen, SYNC 3 delivers high-speed performance. Plus, automatic updates over Wi-Fi<sup>3</sup> help keep it running at its best, so you can keep your eyes on the road and hands on the wheel.

## SYNC

### SYNC 3

Place and answer calls, and control music from your USB device or smartphone, all with simple voice commands. New seamless integration with Siri<sup>®</sup> Eyes Free brings the power of your iPhone<sup>®</sup> into your vehicle. The Navigation System<sup>2</sup> features maps with pinch-to-zoom capability, makes it easy to enter your destination, find the closest ski resort or golf course, and so much more. SYNC AppLink<sup>™4</sup> lets you control compatible mobile apps by voice, too.

## SiriusXM

### SIRIUSXM SATELLITE RADIO

Welcome to the World of SiriusXM<sup>®5</sup> Enjoy more than 150 channels including commercial-free music, plus live sports, news and exclusive entertainment, with a 6-month trial subscription to the All Access package included with your new vehicle. You can also listen online and on the SiriusXM app.<sup>5</sup> The Navigation System<sup>2</sup> includes a 6-year prepaid SiriusXM Traffic and Travel Link<sup>®5</sup> subscription – the longest of any automobile manufacturer<sup>6</sup> – that gives you detailed traffic and weather information, gas station locations and prices, sports scores and much more.

## THX

### THX II CERTIFIED AUDIO SYSTEM

Give yourself and every passenger a front-row seat to the concert with the THX<sup>®</sup> II Certified Audio System.<sup>2</sup> It features specialized sound processing technology combined with 700 watts of power running through 16 speakers to bring the feel of a live show to your everyday commute.

## HD Radio

### HD RADIO TECHNOLOGY

Get more of your favorite music with HD Radio<sup>™</sup> Technology.<sup>2</sup> By broadcasting a digital signal over traditional radio frequencies, HD Radio Technology gives you up to 3 additional channels – per FM station – of new, local content. Plus, it can display on-screen information such as artist, song title, album name and more. And it delivers it all without the need for a subscription.



<sup>1</sup>Driving while distracted can result in loss of vehicle control. Only use SYNC/other devices, even with voice commands, when it is safe to do so. Some features may be locked out while the vehicle is in gear. Not all features are compatible with all phones. Message and data rates apply. <sup>2</sup>Available feature. <sup>3</sup>Optional Navigation System map updates cannot be received via Wi-Fi and require a separate update. <sup>4</sup>SYNC AppLink is available on select models and compatible with select smartphone platforms. Commands may vary by phone and AppLink software. <sup>5</sup>SiriusXM Satellite Radio, SiriusXM Traffic and SiriusXM Travel Link subscriptions are sold separately or as a package by SiriusXM after your trial period, and are continuous until you call SiriusXM at 1-866-635-2349 to cancel. If you decide to continue service after your trial, the subscription plan you choose will automatically renew thereafter and you will be charged according to your chosen payment method at then-current rates. Fees and taxes apply. All fees and programming subject to change. See Customer Agreement for complete terms and more information at [www.siriusxm.com](http://www.siriusxm.com). <sup>6</sup>Source: February 2015 analysis of satellite data service offers by SiriusXM to full-line luxury brand vehicles offered in the U.S.A.



Many a driver has gone around the block just to avoid parallel parking. **Active park assist**<sup>1,2</sup> can help take the guesswork – and stress – out of it. Ultrasonic sensors measure open spaces and help find a parking spot as small as 1.2 times the length of your vehicle. When it does, you literally take your hands off the wheel, then watch as the system guides you into it, while you control the brake, shifter and accelerator.

We could all benefit from a little forward thinking. Thankfully, when you're pulling into a space, the **Forward Sensing System**<sup>1</sup> on MKS sounds an audible tone if its sensors on the front bumper detect an object in front of your vehicle.

It's important to have a sense of what's happening around you. A **Reverse Sensing System**<sup>1</sup> and rear view camera<sup>1</sup> are both standard equipment on every MKS. The audible alerts and full-color visuals are helpful when you're backing into or out of tight spaces, and the camera even displays visual guidelines to help you estimate distances.



<sup>1</sup>Driver-assist features are supplemental and do not replace the driver's attention, judgment and need to control the vehicle. <sup>2</sup>Available feature.



It can be easy to miss when a vehicle has entered your blind spot. Just as its name suggests, **BLIS® (Blind Spot Information System)**<sup>1</sup> can help keep you aware of vehicles that may be out of your line of sight. The system alerts you with a light in the corresponding sideview mirror<sup>2</sup> if its radar sensors detect a vehicle. **Cross-traffic alert**<sup>1</sup> notifies you with an audible beep and a warning light in your sideview mirror if it detects a vehicle approaching either side as you're slowly backing out of a space.



Every now and then, we need a little nudge in the right direction. Fortunately, the **Lane-Keeping System**<sup>1,3</sup> can alert you with a steering wheel vibration if it detects you drifting out of your lane, and can then apply steering wheel torque to help direct you to steer back into it. The **Driver Alert System**<sup>1</sup> also uses a forward-facing camera to detect road lane markings, then emits a chime and displays a coffee cup icon in your gauge cluster if it detects that you've come too close to – or crossed – the lane markings too many times.



It always pays to plan ahead – and your MKS can help with that. Using advanced radar technology to constantly scan for slower vehicles in front of you, **adaptive cruise control and collision warning with brake support**<sup>1</sup> can automatically change your vehicle's speed to maintain your choice of 4 preset gaps – without you having to engage the brake or accelerator pedals. If collision warning with brake support senses a potential collision, the system flashes a warning across the windshield, sounds an alarm, then pre-charges the brakes and increases the brake-assist sensitivity to help provide full responsiveness when you brake.



<sup>1</sup>Available feature. Driver-assist features are supplemental and do not replace the driver's attention, judgment and need to control the vehicle.  
<sup>2</sup>BLIS replaces standard integrated blind spot mirrors. <sup>3</sup>Lane-Keeping System does not control steering.





EPA-ESTIMATED  
RATING **26** hwy  
MPG<sup>3</sup>

### 3.5L ECOBOOST V6

Turbocharge your travels. Lincoln MKS appeals to your outgoing nature with its **365-hp**<sup>1</sup> 3.5L EcoBoost® twin-turbocharged, direct-injection engine.<sup>2</sup> You'll especially enjoy its substantial low-end torque when you accelerate to pass other vehicles or to enter a highway. Plus, MKS with EcoBoost includes **Intelligent all-wheel drive (AWD)** for an even more dynamic driving experience – rain or shine.

### 3.7L V6

Some say efficiency is its own reward. Fortunately, MKS mixes it with plenty of power, courtesy of its standard 3.7L Ti-VCT V6 engine. **Twin independent variable camshaft timing** precisely controls the intake and exhaust valves, helping to produce 304 hp and 279 lb.-ft. of torque, while also optimizing fuel combustion. The **Active Grille Shutter System**<sup>2</sup> automatically opens and closes to help improve aerodynamics and fuel efficiency.<sup>3</sup>

<sup>1</sup>Tested with 93-octane fuel. <sup>2</sup>Available feature. <sup>3</sup>EPA-estimated rating of 17 city/26 hwy/20 combined mpg, 3.7L Ti-VCT, FWD. Actual mileage will vary.





## POWERFUL PRESENCE

Wherever your travels lead, MKS is engineered to help you enjoy the ride. **Lincoln Drive Control featuring continuously controlled damping (CCD)** uses sensors to read the road – and your driving input – every 2 milliseconds, then quickly adjusts the firmness and damping at all 4 wheels to help your MKS remain in harmony with the road. The system also lets you select between 3 drive modes – Comfort, Normal or Sport – to match your driving style. **Electric power-assisted steering (EPAS)** automatically adjusts the steering sensitivity for different driving situations. At the same time, **Torque Vectoring Control** adjusts the speed between your front wheels for enhanced cornering and agility.<sup>1</sup> MKS is designed to embrace the curves.



<sup>1</sup>Remember that even advanced technology cannot overcome the laws of physics. It's always possible to lose control of a vehicle due to inappropriate driver input for the conditions.

**DEP**  
DEALER E-PROCESS

2016  
**LINCOLN MKS**  
Lincoln.com





**LIKE THE WARMING RAYS OF THE SUN, MKS IMPARTS A SENSE OF SERENITY.**

Beneath its beautiful surface lies an array of advanced technologies designed to support your well-being. **AdvanceTrac® electronic stability control** helps keep you on your intended path,<sup>1</sup> while dual-stage front, front-seat side, and side-curtain airbags can help make your travels safe ones. A **dual-panel power moonroof<sup>2</sup>** opens wide to give everyone a clear view, and includes a power sunshade for when you'd rather keep the sun at bay. There's even a **power rear sunshade<sup>2</sup>** that rises with the touch of a button to help shade your rear-seat passengers and help keep the interior cool. And on those early-morning trips when it's a little cooler outside, you can offer those same fortunate passengers **heated rear outboard seats<sup>2</sup>** to adjust to their liking. MKS fills each day with subtle luxuries.



<sup>1</sup>Remember that even advanced technology cannot overcome the laws of physics. It's always possible to lose control of a vehicle due to inappropriate driver input for the conditions. <sup>2</sup>Available feature.





19" Premium  
Luster Nickel-Painted Aluminum  
Standard

*{ WHEELS ADD THE  
FINISHING TOUCH }*

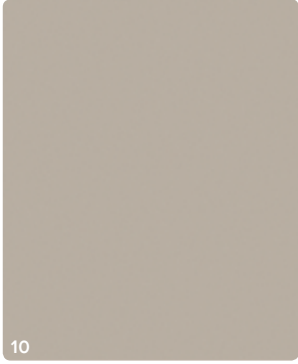
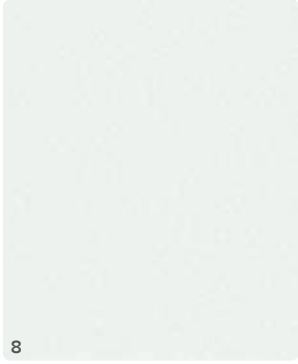
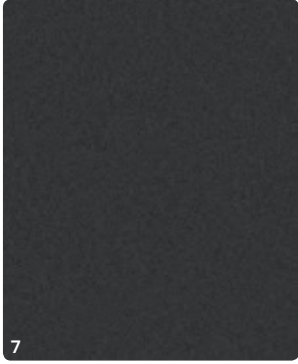
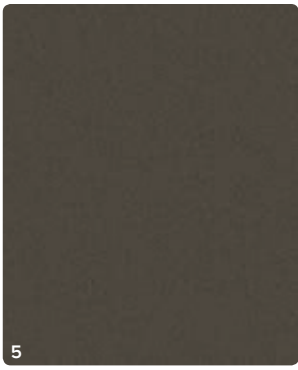
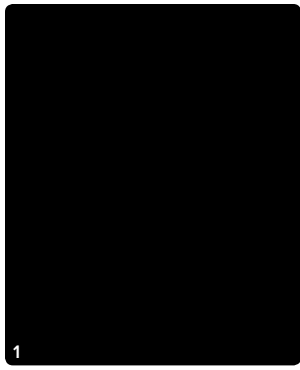


20" Polished Aluminum  
Standard on EcoBoost®



20" Premium Dark Stainless-Painted  
Aluminum with Chrome Inserts  
Available





1. Black Velvet  
6. Bronze Fire Metallic Tinted Clearcoat<sup>1</sup>

2. Ruby Red Metallic Tinted Clearcoat<sup>1</sup>  
7. Magnetic Metallic

3. Ingot Silver Metallic  
8. White Platinum Metallic Tri-coat<sup>1</sup>

4. Guard Metallic  
9. Luxe Metallic

5. Java Metallic  
10. Platinum Dune Metallic Tri-coat<sup>1</sup>

### Charcoal Black



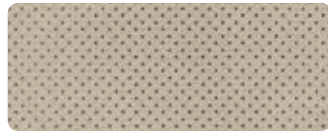
Charcoal Black Leather



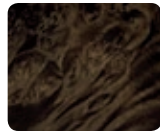
Brown Swirl Walnut Wood

Available with all exterior colors

### Light Dune



Light Dune Leather



Prussian Burl Wood

Available with all exterior colors

### Hazelnut



Hazelnut Leather



Prussian Burl Wood

Available with exterior colors 1, 3, 4, 5, 6, 8, 9, 10

**MKS**

**MKS with EcoBoost**

		<b>POWER AND HANDLING</b>
S	S	3.7L Ti-VCT 24-valve V6 engine 304 hp @ 6,500 rpm 279 lb.-ft. of torque @ 4,000 rpm EPA-estimated fuel economy rating <sup>1</sup> FWD 17 city/26 hwy/20 combined mpg (19.0-gal. capacity) AWD 17 city/24 hwy/19 combined mpg (19.0-gal. capacity)
S	S	3.5L EcoBoost® V6 twin-turbocharged, direct-injection engine 365 hp @ 5,500 rpm <sup>2</sup> 350 lb.-ft. of torque @ 3,500 rpm <sup>2</sup> EPA-estimated fuel economy rating <sup>1</sup> AWD 16 city/24 hwy/19 combined mpg (19.0-gal. capacity)
S	S	6-speed SelectShift® automatic transmission with paddle activation
S		Active Grille Shutters
S	S	Active noise control
S	S	Battery Management System
S	S	Brake- and engine-actuated traction control
S		Front-wheel drive (FWD)
O	S	Intelligent all-wheel drive (AWD)
S	S	Lincoln Drive Control with 3 drive modes (Comfort, Normal, Sport) featuring continuously controlled damping (CCD) and electric power-assisted steering (EPAS)
S	S	Power, ventilated disc brakes with Anti-Lock Brake System (ABS)
S	S	Torque Vectoring Control
		<b>EXTERIOR FEATURES</b>
S	S	Adaptive HID headlamps with auto high beams and autolamp on/off feature with delay
S	S	Dual exhaust with bright tips
S	S	Easy Fuel® capless fuel filler
S	S	Forward and Reverse Sensing Systems
S	S	Halogen projector-beam fog lamps
S	S	LED taillamps
S	S	Lincoln split-wing grille
S	S	Power, heated, body-color sideview mirrors with integrated blind spot mirrors, security approach lamps, memory and auto-dimming driver's side
S	S	Rain-sensing windshield wipers
S	S	Solar-tinted, laminated windshield and front-door glass
		<b>DRIVER CONTROLS</b>
S	S	Cruise control
S	S	Dual-zone electronic automatic temperature control
S	S	Intelligent Access with push-button start (2 key fob transmitters)
S	S	Power-tilt/-telescoping steering column
S	S	Remote Start System
S	S	SYNC® 3 with 8" color LCD touch screen in center stack with swiping capability, AppLink™, 911 Assist®, and 2 smart-charging USB ports
S	S	Universal garage door opener
		<b>AUDIO SYSTEMS</b>
S	S	Lincoln Premium Sound System with AM/FM stereo, single-CD player, MP3 capability and 10 speakers
S	S	SiriusXM® Satellite Radio with 6-month trial subscription

**DIMENSIONS**

<b>LENGTH</b>	205.6"
<b>HEIGHT</b>	61.6"
<b>WHEELBASE</b>	112.9"
<b>WIDTH</b>	85.5" (including mirrors) 79.4" (mirrors folded)
<b>HEAD ROOM</b>	39.7" front/38.5" rear
<b>SHOULDER ROOM</b>	58.6" front/57.4" rear
<b>HIP ROOM</b>	55.3" front/55.3" rear
<b>LEG ROOM</b>	44.2" front (max.)/38.6" rear
<b>CARGO VOLUME</b>	19.2 cu. ft.
<b>PASSENGER VOLUME</b>	105.8 cu. ft.
<b>TOTAL INTERIOR VOLUME</b>	125.0 cu. ft.

S = Standard O = Optional

<sup>1</sup>Actual mileage will vary. <sup>2</sup>Tested with 93-octane fuel.

Android is a trademark of Google Inc. Bridge of Weir is a trademark of Bridge of Weir Leather Company Limited. "HD Radio" and the HD Radio logo are proprietary trademarks of iBiquity Digital Corporation. iPhone and Siri are trademarks of Apple Inc., registered in the U.S. and other countries. SiriusXM services require a subscription, sold separately by SiriusXM after trial period. Fees and taxes apply. All fees and programming subject to change. Sirius satellite service is available only to those in the 48 contiguous USA, D.C. and PR (with coverage limitations). Our Internet radio service is available throughout our satellite service area and in AK and HI. Some channels not available in all lineups. Sirius, XM and all related marks and logos are trademarks of Sirius XM Radio Inc. THX and the THX logo are trademarks of THX Ltd., registered in the U.S. and other jurisdictions. All rights reserved. Wi-Fi® is a registered trademark of the Wi-Fi Alliance.®



**MKS**

**MKS with EcoBoost®**

INTERIOR FEATURES	
S	S 12-volt powerpoints (3)
O	O All-weather floor mats
S	S Ambient lighting
O	O Ash cup/coin holder with lighter element
S	S Auto-dimming rearview mirror
O	O Cargo organizer
O	O Dual-panel power moonroof with power sunshade
S	S Leather-wrapped steering wheel with genuine wood accent in brown swirl walnut or Prussian burl
S	S Power windows with global open/close and one-touch-up/-down
SEATING	
S	S 12-way power, heated and cooled driver and front-passenger seats with power lumbar and memory feature
S	S Bridge of Weir™ leather-trimmed seats
S	S Rear center armrest with pass-through and 2 cupholders
SAFETY AND SECURITY	
S	S Personal Safety System™ for driver and front passenger with dual-stage front airbags, <sup>1</sup> safety belt pretensioners, safety belt energy-management retractors, safety belt usage sensors, driver's seat position sensor, crash severity sensor, restraint control module and Front-Passenger Sensing System
S	S Front-seat side airbags <sup>1</sup>
S	S Safety Canopy® System with side-curtain airbags, <sup>1</sup> roll-fold technology and rollover sensor
S	S AdvanceTrac® electronic stability control with Curve Control
S	S Anti-theft perimeter alarm
S	S LATCH (Lower Anchors and Tether Anchors for Children)
S	S MyKey®
S	S Rear view camera
S	S SecuriCode™ invisible keypad
S	S SecuriLock® Passive Anti-Theft System
S	S SOS Post-Crash Alert System™
S	S Tire Pressure Monitoring System (excludes spare)
PACKAGES	
O	O Cold Weather Package: heated steering wheel and rear outboard seats (requires Elite Package)
O	O Elite Package: integrated SiriusXM Traffic and Travel Link® with 6-year subscription; voice-activated Navigation System with pinch-to-zoom capability and HD Radio™ Technology; BLIS® (Blind Spot Information System) with cross-traffic alert; <sup>2</sup> THX® II Certified Audio System with 16 speakers (including 10" subwoofer) and 14-channel amplifier with 700 watts of maximum power; 8-way power multicontour front seats with Active Motion®; power-adjustable pedals with memory; power rear sunshade; and wood appliqué in brown swirl walnut or Prussian burl on all doors, front center console and shifter surround
O	O Technology Package: adaptive cruise control and collision warning with brake support, active park assist, and Lane-Keeping System with Driver Alert System (requires Elite Package)

S = Standard O = Optional

**LINCOLN AUTOMOTIVE FINANCIAL SERVICES**

Whether you decide to purchase or lease, you'll find a plan designed to fit your individual needs. Visit [LincolnAFS.com](http://LincolnAFS.com) or your Lincoln Showroom to explore your financing options.

**LINCOLN EXTENDED SERVICE PLAN**

For a purchase or lease, Lincoln Extended Service Plan (ESP) gives you peace-of-mind protection designed to cover key vehicle components and protect you from the cost of unexpected repairs. Whether looking for additional mechanical, prepaid maintenance or tire protection plans, Lincoln ESP has you covered. Ask your dealer for Lincoln ESP, the only service contract backed by Lincoln and honored at all Lincoln dealerships in the U.S., Canada and Mexico.



Discover more at [Lincoln.com](http://Lincoln.com)

Comparisons based on competitive models (class is Luxury Full-Size Sedans based on Lincoln segmentation), publicly available information and Ford certification data at time of release. Vehicles may be shown with optional equipment. Features may be offered only in combination with other options or subject to additional ordering requirements/limitations. Dimensions shown may vary due to optional features and/or production variability. Information is provided on an "as is" basis and could include technical, typographical or other errors. Ford makes no warranties, representations, or guarantees of any kind, express or implied, including but not limited to, accuracy, currency, or completeness, the operation of the information, materials, content, availability, and products. Lincoln reserves the right to change product specifications, pricing and equipment at any time without incurring obligations. Your Lincoln Dealer is the best source of the most up-to-date information on Lincoln vehicles.

©2015 Lincoln 16MKSPDF

<sup>1</sup>Always wear your safety belt and secure children in the rear seat. <sup>2</sup>BLIS replaces standard integrated blind spot mirrors.





**ELECTRONICS**

- Remote start systems
- Vehicle Security System

**EXTERIOR**

- Full vehicle cover by Covercraft®<sup>1</sup>
- Locking fuel plug
- Moonroof deflector
- Side window deflectors
- Splash guards
- Wheel lock kit

**INTERIOR**

- All-weather and premium carpeted floor mats
- Ash cup/coin holder with or without lighter element
- Cargo area protector
- Cargo organizer
- First aid kit by DC Safety®<sup>1</sup>
- Roadside assistance kit by DC Safety<sup>1</sup>
- Soft cargo cooler bag
- Soft cargo organizers (large and standard sizes)
- Sport pedals
- Tablet cradle by Lumen®<sup>1</sup>



Visit [accessories.lincoln.com](http://accessories.lincoln.com) to shop the complete collection.

Lincoln Original Accessories will be warranted for whichever provides you the greatest benefit: 24 months/unlimited mileage, or the remainder of your Bumper-to-Bumper 4-year/50,000-mile New Vehicle Limited Warranty. Lincoln Licensed Accessories (LLA) are warranted by the accessory manufacturer's warranty. LLA are designed and developed by the accessory manufacturer and have not been designed or tested to Ford Motor Company engineering requirements. Contact your Lincoln Dealer for details and/or a copy of all limited warranties.

# THE LINCOLN PLEDGE

It's the collective promise of everyone at the Lincoln Motor Company – from our trusted service advisors and expert technicians, to the voice on the other end of the line should you call – that we'll be there for you and your Lincoln wherever, whenever, if ever, you need us.

## LINCOLN LIMITED WARRANTIES<sup>2</sup>

You can rest assured with a 4-year/50,000-mile Bumper-to-Bumper Warranty that covers repair, replacement or adjustment of parts at no additional cost, as well as a 6-year/70,000-mile Powertrain Warranty which features no deductible and is fully transferable.

## LINCOLN COMPLIMENTARY MAINTENANCE<sup>3</sup>

We are pleased to offer complimentary maintenance for 2 years/24,000 miles. At no charge to you, your maintenance visits will include an oil and filter change, and tire rotation, scheduled to accommodate your busy life.

## LINCOLN ROADSIDE ASSISTANCE FOR LIFE<sup>3</sup>

Help is only a phone call away, should you run out of fuel, lock yourself out of the vehicle, or need towing to the closest Lincoln dealership – or to your preferred Lincoln dealership within 100 miles. For the original owner, the Lincoln Roadside Assistance program provides these services 24/7 for as long as you own the vehicle – at no charge.

## COMPLIMENTARY CAR WASH<sup>4</sup>

At the completion of any service on your Lincoln, drive away from the dealership in a clean vehicle that looks just as beautiful as the day you bought it. It's just another shining example of our commitment to you.

## COURTESY VEHICLE<sup>4</sup>

Should your Lincoln require warranty service, you can count on us to be there for you with a courtesy vehicle. It's just one more way to let you know that we'll be here for you.

## SERVICE PARTS WARRANTY

We'll stand behind our service – and you – with a 2-year, unlimited-mile warranty on both parts and labor.

## MYLINCOLN MOBILE APP

Available through a free download to your iPhone® or Android™ device, the MyLincoln™ Mobile app provides easy access to Roadside Assistance, your Lincoln Concierge and other premium Lincoln owner services.

## LINCOLN CONCIERGE

As the owner of a Lincoln, you can take comfort in knowing that we're always by your side. Our caring agents are empowered to handle your concerns – no matter how big or small they may seem.

Lincoln Concierge and Roadside Assistance  
(800) 521-4140

TDD (hearing impaired)  
(800) 232-5952



<sup>1</sup>Lincoln Licensed Accessory. <sup>2</sup>Lincoln reserves the right to change program details at any time without obligations. See your dealer for limited warranty details. <sup>3</sup>Lincoln reserves the right to change program details at any time without obligations. See Service Advisor for complete details. <sup>4</sup>Availability depends on dealership participation. See dealer for details.

